



[Go to Product page](#)

Datasheet for ABIN7265355  
**anti-ABHD12 antibody (AA 110-250)**

1 Image

Overview

Quantity:	100 µL
Target:	ABHD12
Binding Specificity:	AA 110-250
Reactivity:	Human
Host:	Rabbit
Clonality:	Polyclonal
Conjugate:	This ABHD12 antibody is un-conjugated
Application:	Western Blotting (WB)

Product Details

Purpose:	ABHD12 Rabbit pAb
Immunogen:	Recombinant fusion protein containing a sequence corresponding to amino acids 110-250 of human ABHD12 (NP_056415.1).
Sequence:	YFIDLKQPQD QGLNHTCNYY LQPEEDVTIG VWHTVPAVWW KNAQGKQDMW YEDALASSHP IILYLHGNAG TRGGDHRVEL YKVLSSLGYH VVTFDYRGWG DSVGTPSERG MTYDALHVF WIKARSGDNP VYIWGHSLGT G
Isotype:	IgG
Cross-Reactivity:	Human, Rat
Characteristics:	Polyclonal Antibodies
Purification:	Affinity purification

## Target Details

---

Target:	ABHD12
Alternative Name:	ABHD12 ( <a href="#">ABHD12 Products</a> )
Background:	<p>This gene encodes an enzyme that catalyzes the hydrolysis of 2-arachidonoyl glycerol (2-AG), the main endocannabinoid lipid transmitter that acts on cannabinoid receptors, CB1 and CB2. The endocannabinoid system is involved in a wide range of physiological processes, including neurotransmission, mood, appetite, pain appreciation, addiction behavior, and inflammation. Mutations in this gene are associated with the neurodegenerative disease, PHARC (polyneuropathy, hearing loss, ataxia, retinitis pigmentosa, and cataract), resulting from an inborn error of endocannabinoid metabolism. Alternatively spliced transcript variants encoding different isoforms have been noted for this gene.[provided by RefSeq, Jan 2011],ABHD12A,BEM46L2,C20orf22,PHARC,dJ965G21.2,ABHD12,ABHD12</p>
Gene ID:	26090
UniProt:	<a href="#">Q8N2K0</a>

## Application Details

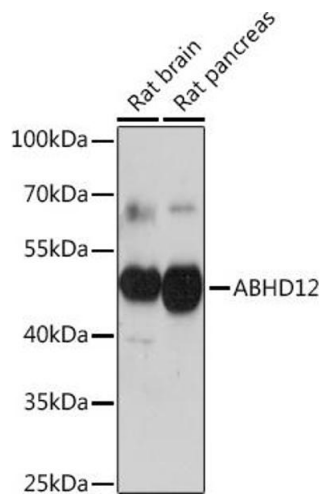
---

Application Notes:	WB,1:500 - 1:2000
Restrictions:	For Research Use only

## Handling

---

Format:	Liquid
Buffer:	PBS with 0.02 % sodium azide,50 % glycerol, pH 7.3.
Preservative:	Sodium azide
Precaution of Use:	This product contains Sodium azide: a POISONOUS AND HAZARDOUS SUBSTANCE which should be handled by trained staff only.
Storage:	-20 °C
Storage Comment:	Store at -20°C. Avoid freeze / thaw cycles.



### Western Blotting

**Image 1.** Western blot analysis of extracts of various cell lines, using Rabbit pAb (ABIN7265355) at 1:1000 dilution. Secondary antibody: HRP Goat Anti-Rabbit IgG (H+L) (ABIN1684268 and ABIN3020597) at 1:10000 dilution. Lysates/proteins: 25 µg per lane. Blocking buffer: 3 % nonfat dry milk in TBST. Detection: ECL Basic Kit (RM00020). Exposure time: 10s.