



[Go to Product page](#)

Datasheet for ABIN7265359
anti-ABI1 antibody (AA 180-230)

6 Images

Overview

| | |
|----------------------|---|
| Quantity: | 100 µL |
| Target: | ABI1 |
| Binding Specificity: | AA 180-230 |
| Reactivity: | Human |
| Host: | Rabbit |
| Clonality: | Polyclonal |
| Conjugate: | This ABI1 antibody is un-conjugated |
| Application: | Western Blotting (WB), Immunohistochemistry (IHC) |

Product Details

| | |
|-------------------|---|
| Purpose: | ABI1 Rabbit pAb |
| Immunogen: | Recombinant fusion protein containing a sequence corresponding to amino acids 180-230 of human ABI1 (NP_001012770). |
| Sequence: | PMSGRGTLGR NTPYKTLPEV KPPTVPNDYM TSPARLGSQH SPGRTASLNQ R |
| Isotype: | IgG |
| Cross-Reactivity: | Human, Mouse, Rat |
| Characteristics: | Polyclonal Antibodies |
| Purification: | Affinity purification |

Target Details

| | |
|-------------------|--|
| Target: | ABI1 |
| Alternative Name: | ABI1 (ABI1 Products) |
| Background: | <p>This gene encodes a member of the Abelson-interactor family of adaptor proteins. These proteins facilitate signal transduction as components of several multiprotein complexes, and regulate actin polymerization and cytoskeletal remodeling through interactions with Abelson tyrosine kinases. The encoded protein plays a role in macropinocytosis as a component of the WAVE2 complex, and also forms a complex with EPS8 and SOS1 that mediates signal transduction from Ras to Rac. This gene may play a role in the progression of several malignancies including melanoma, colon cancer and breast cancer, and a t(10,11) chromosomal translocation involving this gene and the MLL gene has been associated with acute myeloid leukemia. Alternatively spliced transcript variants encoding multiple isoforms have been observed for this gene, and a pseudogene of this gene is located on the long arm of chromosome 14.,ABI1,ABI-1,ABLBP4,E3B1,NAP1BP,SSH3BP,SSH3BP1,Signal Transduction,G protein signaling,Signal Transduction,Kinase,Cell Biology & Developmental Biology,Cell Cycle,Growth factor,EGF,ABI1</p> |
| Molecular Weight: | 35-55kDa |
| Gene ID: | 10006 |
| UniProt: | Q8IZP0 |
| Pathways: | RTK Signaling , Response to Water Deprivation , ER-Nucleus Signaling |

Application Details

| | |
|--------------------|------------------------------------|
| Application Notes: | WB,1:500 - 1:2000,IHC,1:50 - 1:200 |
| Restrictions: | For Research Use only |

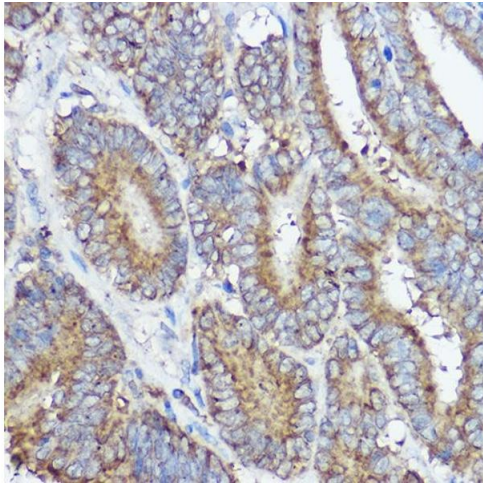
Handling

| | |
|--------------------|--|
| Format: | Liquid |
| Buffer: | PBS with 0.02 % sodium azide,50 % glycerol, pH 7.3. |
| Preservative: | Sodium azide |
| Precaution of Use: | This product contains Sodium azide: a POISONOUS AND HAZARDOUS SUBSTANCE which should be handled by trained staff only. |
| Storage: | -20 °C |

Handling

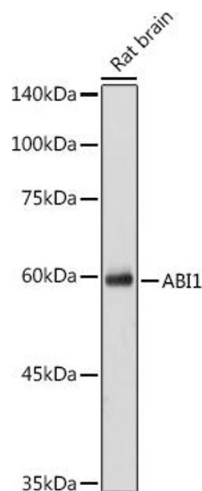
Storage Comment: Store at -20°C. Avoid freeze / thaw cycles.

Images



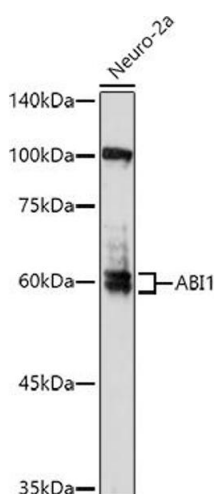
Immunohistochemistry

Image 1. Immunohistochemistry of paraffin-embedded human colon carcinoma using Rabbit pAb (ABIN7265359) at dilution of 1:50 (40x lens). Perform high pressure antigen retrieval with 10 mM citrate buffer pH 6.0 before commencing with IHC staining protocol.



Western Blotting

Image 2. Western blot analysis of extracts of Rat brain cells, using antibody (ABIN7265359) at 1:1000 dilution. Secondary antibody: HRP Goat Anti-Rabbit IgG (H+L) (ABIN1684268 and ABIN3020597) at 1:10000 dilution. Lysates/proteins: 25 µg per lane. Blocking buffer: 3% nonfat dry milk in TBST. Detection: ECL Basic Kit (RM00020). Exposure time: 30s.



Western Blotting

Image 3. Western blot analysis of extracts of Neuro-2a cells, using antibody (ABIN7265359) at 1:1000 dilution. Secondary antibody: HRP Goat Anti-Rabbit IgG (H+L) (ABIN1684268 and ABIN3020597) at 1:10000 dilution. Lysates/proteins: 25 µg per lane. Blocking buffer: 3% nonfat dry milk in TBST. Detection: ECL Enhanced Kit (RM00021). Exposure time: 180s.

Please check the [product details page](#) for more images. Overall 6 images are available for ABIN7265359.