

Datasheet for ABIN7265369

anti-Acetyl-CoA Carboxylase alpha antibody

5 Images

[Go to Product page](#)

Overview

Quantity:	100 µL
Target:	Acetyl-CoA Carboxylase alpha (ACACA)
Reactivity:	Human
Host:	Rabbit
Clonality:	Monoclonal
Conjugate:	This Acetyl-CoA Carboxylase alpha antibody is un-conjugated
Application:	Western Blotting (WB), Immunohistochemistry (IHC), Immunoprecipitation (IP)

Product Details

Purpose:	ACC1 Rabbit mAb
Immunogen:	A synthesized peptide derived from human ACC1
Isotype:	IgG
Cross-Reactivity:	Human, Mouse, Rat
Characteristics:	Monoclonal Antibodies
Purification:	Affinity purification

Target Details

Target:	Acetyl-CoA Carboxylase alpha (ACACA)
Alternative Name:	ACC1 (ACACA Products)
Background:	Acetyl-CoA carboxylase (ACC) is a complex multifunctional enzyme system. ACC is a biotin-

Target Details

containing enzyme which catalyzes the carboxylation of acetyl-CoA to malonyl-CoA, the rate-limiting step in fatty acid synthesis. There are two ACC forms, alpha and beta, encoded by two different genes. ACC-alpha is highly enriched in lipogenic tissues. The enzyme is under long term control at the transcriptional and translational levels and under short term regulation by the phosphorylation/dephosphorylation of targeted serine residues and by allosteric transformation by citrate or palmitoyl-CoA. Multiple alternatively spliced transcript variants divergent in the 5' sequence and encoding distinct isoforms have been found for this gene.,ACC, ACAC, ACC1, ACCA, ACACAD,Endocrine & Metabolism,Lipid Metabolism,AMPK Signaling Pathway,Warburg Effect,ACC1

Molecular Weight: 257kDa/259kDa/265kDa/269kDa

Gene ID: 31

UniProt: [Q13085](#)

Pathways: [AMPK Signaling](#), [Ribonucleoside Biosynthetic Process](#), [Warburg Effect](#)

Application Details

Application Notes: WB,1:500 - 1:2000,IHC,1:50 - 1:200,IP,1:50 - 1:200

Restrictions: For Research Use only

Handling

Format: Liquid

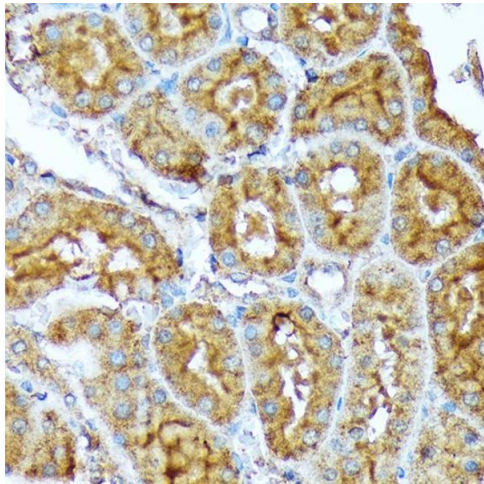
Buffer: PBS with 0.02 % sodium azide,0.05 % BSA,50 % glycerol, pH 7.3.

Preservative: Sodium azide

Precaution of Use: This product contains Sodium azide: a POISONOUS AND HAZARDOUS SUBSTANCE which should be handled by trained staff only.

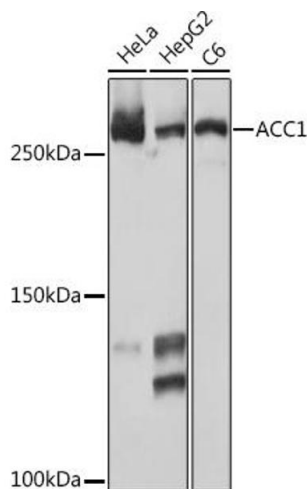
Storage: -20 °C

Storage Comment: Store at -20°C. Avoid freeze / thaw cycles.



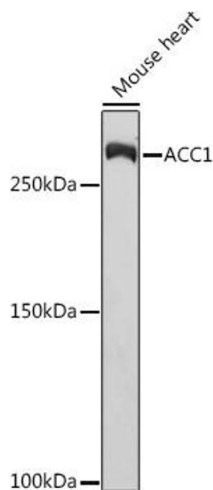
Immunohistochemistry

Image 1. Immunohistochemistry of paraffin-embedded rat kidney using Rabbit mAb (ABIN7265369) at dilution of 1:100 (40x lens). Perform microwave antigen retrieval with 10 mM Tris/EDTA buffer pH 9.0 before commencing with IHC staining protocol.



Western Blotting

Image 2. Western blot analysis of extracts of various cell lines, using Rabbit mAb (ABIN7265369) at 1:1000 dilution. Secondary antibody: HRP Goat Anti-Rabbit IgG (H+L) (ABIN1684268 and ABIN3020597) at 1:10000 dilution. Lysates/proteins: 25 µg per lane. Blocking buffer: 3 % nonfat dry milk in TBST. Detection: ECL Basic Kit (RM00020). Exposure time: 10s.



Western Blotting

Image 3. Western blot analysis of extracts of Mouse heart, using Rabbit mAb (ABIN7265369) at 1:1000 dilution. Secondary antibody: HRP Goat Anti-Rabbit IgG (H+L) (ABIN1684268 and ABIN3020597) at 1:10000 dilution. Lysates/proteins: 25 µg per lane. Blocking buffer: 3 % nonfat dry milk in TBST. Detection: ECL Basic Kit (RM00020). Exposure time: 30s.

Please check the [product details page](#) for more images. Overall 5 images are available for ABIN7265369.