



[Go to Product page](#)

Datasheet for ABIN7265373
anti-ASCL1 antibody (AA 77-236)

1 Image

Overview

Quantity:	100 µL
Target:	ASCL1
Binding Specificity:	AA 77-236
Reactivity:	Human
Host:	Rabbit
Clonality:	Polyclonal
Conjugate:	This ASCL1 antibody is un-conjugated
Application:	Western Blotting (WB)

Product Details

Purpose:	Ascl1 Rabbit pAb
Immunogen:	Recombinant fusion protein containing a sequence corresponding to amino acids 77-236 of human Ascl1 (NP_004307.2).
Sequence:	GGHKSAPKQV KRQRSSPEL MRCKRRLNFS GFGYSLPQQQ PAAVARRNER ERNRVKLVNL GFATLREHVP NGAANKKMSK VETLRSAVEY IRALQQLLDE HDAVSAAFQA GVLSPTISPN YSNDLNSMAG SPVSSYSSDE GSYDPLSPEE QELLDFTNWF
Isotype:	IgG
Cross-Reactivity:	Human, Mouse, Rat
Characteristics:	Polyclonal Antibodies
Purification:	Affinity purification

Target Details

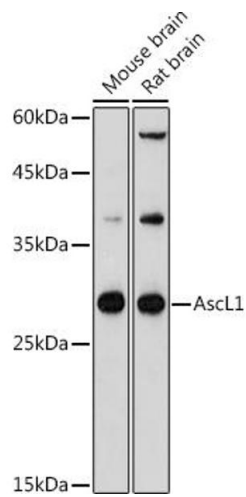
Target:	ASCL1
Alternative Name:	Ascl1 (ASCL1 Products)
Background:	<p>This gene encodes a member of the basic helix-loop-helix (BHLH) family of transcription factors. The protein activates transcription by binding to the E box (5'-CANNTG-3'). Dimerization with other BHLH proteins is required for efficient DNA binding. This protein plays a role in the neuronal commitment and differentiation and in the generation of olfactory and autonomic neurons. Mutations in this gene may contribute to the congenital central hypoventilation syndrome (CCHS) phenotype in rare cases.,ASCL1,ASH1,HASH1,MASH1,bHLHa46,Ascl1,Epigenetics & Nuclear Signaling,Transcription Factors,Neuroscience,Ascl1</p>
Molecular Weight:	25kDa
Gene ID:	429
UniProt:	P50553
Pathways:	Dopaminergic Neurogenesis

Application Details

Application Notes:	WB,1:500 - 1:2000
Restrictions:	For Research Use only

Handling

Format:	Liquid
Buffer:	PBS with 0.02 % sodium azide,50 % glycerol, pH 7.3.
Preservative:	Sodium azide
Precaution of Use:	This product contains Sodium azide: a POISONOUS AND HAZARDOUS SUBSTANCE which should be handled by trained staff only.
Storage:	-20 °C
Storage Comment:	Store at -20°C. Avoid freeze / thaw cycles.



Western Blotting

Image 1. Western blot analysis of extracts of various cell lines, using Ascl1 antibody (ABIN7265373) at 1:500 dilution. Secondary antibody: HRP Goat Anti-Rabbit IgG (H+L) (ABIN1684268 and ABIN3020597) at 1:10000 dilution. Lysates/proteins: 25 µg per lane. Blocking buffer: 3 % nonfat dry milk in TBST. Detection: ECL Basic Kit (RM00020). Exposure time: 180s.