



[Go to Product page](#)

Datasheet for ABIN7265381
anti-ABLIM3 antibody (AA 350-520)

1 Image

Overview

Quantity:	100 µL
Target:	ABLIM3
Binding Specificity:	AA 350-520
Reactivity:	Human
Host:	Rabbit
Clonality:	Polyclonal
Conjugate:	This ABLIM3 antibody is un-conjugated
Application:	Western Blotting (WB)

Product Details

Purpose:	ABLIM3 Rabbit pAb
Immunogen:	Recombinant fusion protein containing a sequence corresponding to amino acids 350-520 of human ABLIM3 (NP_001287957.1).
Sequence:	TSEDISQTSK YSPIYSPDPY YASESEYWTY HGSPKVPRAR RFSSGG EEDD FDRSMHKLQS GIGRLILKEE MKARSSSYAD PWTPPRSSTS SREALHTAGY EMSLNGSPRS HYLADSDPLI SKSASLPAYR RNLHRTPSA DLFHYDSMNA VNWGMREYKI YPYELLLVTT R
Isotype:	IgG
Cross-Reactivity:	Mouse, Rat
Characteristics:	Polyclonal Antibodies
Purification:	Affinity purification

Target Details

Target: ABLIM3

Alternative Name: ABLIM3 ([ABLIM3 Products](#))

Background: This gene encodes a member of the actin-binding LIM (abLIM) family of proteins. These proteins are characterized by an N-terminal LIM domain and a C-terminal dematin-like domain. The encoded protein interacts with actin filaments and may be a component of adherens junctions in several cell types. A variant of this gene may be associated with pain sensitivity in male human patients. [provided by RefSeq, Sep 2016],HMFN1661,ABLIM3,Signal Transduction,Cell Biology & Developmental Biology,Cytoskeleton,Microfilaments,ABLIM3

Gene ID: 22885

UniProt: [094929](#)

Application Details

Application Notes: WB,1:500 - 1:2000

Restrictions: For Research Use only

Handling

Format: Liquid

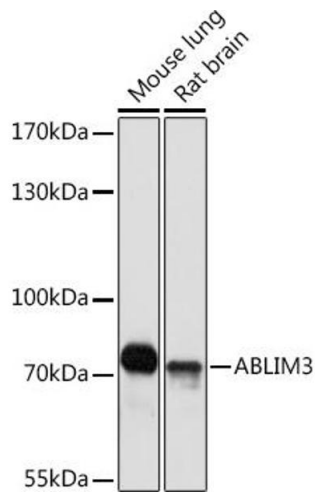
Buffer: PBS with 0.02 % sodium azide,50 % glycerol, pH 7.3.

Preservative: Sodium azide

Precaution of Use: This product contains Sodium azide: a POISONOUS AND HAZARDOUS SUBSTANCE which should be handled by trained staff only.

Storage: -20 °C

Storage Comment: Store at -20°C. Avoid freeze / thaw cycles.



Western Blotting

Image 1. Western blot analysis of extracts of various cell lines, using Rabbit pAb (ABIN7265381) at 1:1000 dilution. Secondary antibody: HRP Goat Anti-Rabbit IgG (H+L) (ABIN1684268 and ABIN3020597) at 1:10000 dilution. Lysates/proteins: 25 µg per lane. Blocking buffer: 3 % nonfat dry milk in TBST. Detection: ECL Basic Kit (RM00020). Exposure time: 30s.