

Datasheet for ABIN7265385

anti-ARPC2 antibody

4 Images

[Go to Product page](#)

Overview

Quantity:	100 µL
Target:	ARPC2
Reactivity:	Human
Host:	Rabbit
Clonality:	Monoclonal
Conjugate:	This ARPC2 antibody is un-conjugated
Application:	Western Blotting (WB), Immunoprecipitation (IP), Immunofluorescence (IF)

Product Details

Purpose:	ARPC2 Rabbit mAb
Immunogen:	A synthesized peptide derived from human ARPC2.
Isotype:	IgG
Cross-Reactivity:	Human, Mouse, Rat
Characteristics:	Monoclonal Antibodies
Purification:	Affinity purification

Target Details

Target:	ARPC2
Alternative Name:	ARPC2 (ARPC2 Products)
Background:	This gene encodes one of seven subunits of the human Arp2/3 protein complex. The Arp2/3

Target Details

protein complex has been implicated in the control of actin polymerization in cells and has been conserved through evolution. The exact role of the protein encoded by this gene, the p34 subunit, has yet to be determined. Two alternatively spliced variants have been characterized to date. Additional alternatively spliced variants have been described but their full length nature has not been determined.,ARPC2, ARC34, PNAS-139, PRO2446, p34-Arc, actin-related protein 2/3 complex subunit 2,Signal Transduction,Cell Biology & Developmental Biology,Cytoskeleton,Microfilaments,Actins,ARPC2

Molecular Weight: 34kDa

Gene ID: 10109

UniProt: [O15144](#)

Pathways: [RTK Signaling](#), [Regulation of Actin Filament Polymerization](#)

Application Details

Application Notes: WB,1:500 - 1:2000,IF,1:50 - 1:200,IP,1:50 - 1:200

Restrictions: For Research Use only

Handling

Format: Liquid

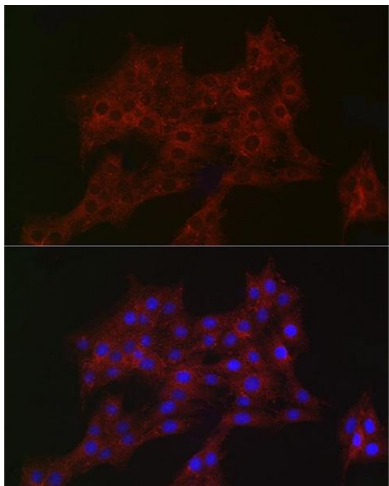
Buffer: PBS with 0.02 % sodium azide,0.05 % BSA,50 % glycerol, pH 7.3.

Preservative: Sodium azide

Precaution of Use: This product contains Sodium azide: a POISONOUS AND HAZARDOUS SUBSTANCE which should be handled by trained staff only.

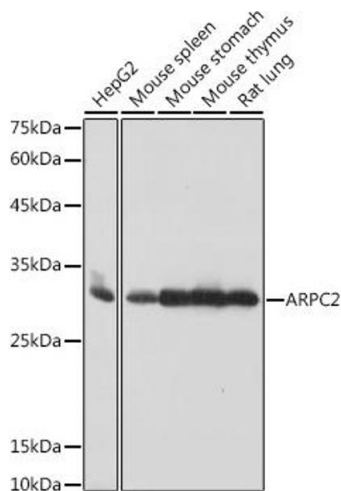
Storage: -20 °C

Storage Comment: Store at -20°C. Avoid freeze / thaw cycles.



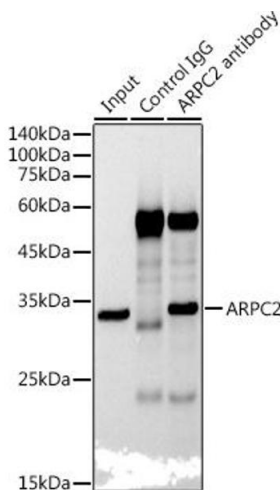
Immunofluorescence

Image 1. Immunofluorescence analysis of PC-12 cells using Rabbit mAb (ABIN7265385) at dilution of 1:100 (40x lens). Blue: DAPI for nuclear staining.



Western Blotting

Image 2. Western blot analysis of extracts of various cell lines, using antibody (ABIN7265385) at 1:1000 dilution. Secondary antibody: HRP Goat Anti-Rabbit IgG (H+L) (ABIN1684268 and ABIN3020597) at 1:10000 dilution. Lysates/proteins: 25 µg per lane. Blocking buffer: 3 % nonfat dry milk in TBST. Detection: ECL Basic Kit (RM00020). Exposure time: 1 s.



Immunoprecipitation

Image 3. Immunoprecipitation analysis of 300 µg extracts of HepG2 cells using 3 µg antibody (ABIN7265385). Western blot was performed from the immunoprecipitate using antibody (ABIN7265385) at a dilution of 1:1000.

Please check the [product details page](#) for more images. Overall 4 images are available for ABIN7265385.