



[Go to Product page](#)

Datasheet for ABIN7265389
anti-ACTL9 antibody (AA 1-416)

1 Image

Overview

Quantity:	100 µL
Target:	ACTL9
Binding Specificity:	AA 1-416
Reactivity:	Human
Host:	Rabbit
Clonality:	Polyclonal
Conjugate:	This ACTL9 antibody is un-conjugated
Application:	Western Blotting (WB)

Product Details

Purpose:	ACTL9 Rabbit pAb
Immunogen:	Recombinant fusion protein containing a sequence corresponding to amino acids 1-416 of human ACTL9 (NP_848620.3).
Sequence:	MDASRPKSSE SQSSLEAPRP GPNPSPNVVN KPLQRDSPGM VADRLPPKGT AVVIDMGTGT CKVGFAGQAS PTYTVATILG CQPKKPATSG QSQLQTFIGE AARVLPELTL VQPLRSGIIV DWDAAEIWR HLLHDLRVA THDHPLLFSD PPFSPATNRE KLVEVAFESL RSPAMYVASQ SVLSVYAHGR VSGLVVDGTGH GVTYTVPVFQ GYNLLHATER LDLAGNNLTA FLAEMLLQAG LPLGQQDL DL VENIKHHYCY VASDFQKEQA RPEQEYKRTL KLPDGRVTVL GKELFQCP EL LFNPPPEV PGL SPVGLSTMAK QSLRKLSLEM RADLAQNVLL CGGSSLFTGF EGRFRAELLR ALPAETHVVV AAQPTRNFSV WIGGSILASL RAFQSCWVLR EQYEEQGPYI VYRKCY
Isotype:	IgG

Product Details

Cross-Reactivity:	Mouse, Rat
Characteristics:	Polyclonal Antibodies
Purification:	Affinity purification

Target Details

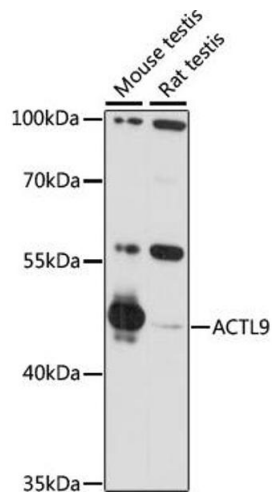
Target:	ACTL9
Alternative Name:	ACTL9 (ACTL9 Products)
Background:	ACTL9,HSD21,Epigenetics & Nuclear Signaling,Cell Biology & Developmental Biology,ACTL9
Molecular Weight:	45kDa
Gene ID:	284382
UniProt:	Q8TC94

Application Details

Application Notes:	WB,1:500 - 1:2000
Restrictions:	For Research Use only

Handling

Format:	Liquid
Buffer:	PBS with 0.02 % sodium azide,50 % glycerol, pH 7.3.
Preservative:	Sodium azide
Precaution of Use:	This product contains Sodium azide: a POISONOUS AND HAZARDOUS SUBSTANCE which should be handled by trained staff only.
Storage:	-20 °C
Storage Comment:	Store at -20°C. Avoid freeze / thaw cycles.



Western Blotting

Image 1. Western blot analysis of extracts of various cell lines, using antibody (ABIN7265389) at 1:1000 dilution. Secondary antibody: HRP Goat Anti-Rabbit IgG (H+L) (ABIN1684268 and ABIN3020597) at 1:10000 dilution. Lysates/proteins: 25 µg per lane. Blocking buffer: 3% nonfat dry milk in TBST. Detection: ECL Basic Kit (RM00020). Exposure time: 90s.