

Datasheet for ABIN7265409
anti-MCAF1 antibody (AA 525-725)



[Go to Product page](#)

1 Image

Overview

Quantity:	100 µL
Target:	MCAF1 (ATF7IP)
Binding Specificity:	AA 525-725
Reactivity:	Human
Host:	Rabbit
Clonality:	Polyclonal
Conjugate:	This MCAF1 antibody is un-conjugated
Application:	Western Blotting (WB)

Product Details

Purpose:	ATF7IP Rabbit pAb
Immunogen:	Recombinant fusion protein containing a sequence corresponding to amino acids 525-725 of human ATF7IP (NP_060649.3).
Sequence:	NEKDNKPEEE EQVIHEDDER PSEKNEFSRR KRSKSEDMDN VQSKRRRYME EEYEAEFQVK ITAKGDINQK LQKVIQWLE EKLCALQCAV FDKTLAELKT RVEKIECNKR HKTVLTELQA KIARLTKRFE AAKEDLKKRH EHPPNPPVSP GKTVNDVNSN NNMSYRNAGT VRQMLESKRN VSESAPPSFQ TPVNTVSSTN L
Isotype:	IgG
Cross-Reactivity:	Human, Mouse
Characteristics:	Polyclonal Antibodies

Product Details

Purification: Affinity purification

Target Details

Target: MCAF1 (ATF7IP)

Alternative Name: ATF7IP ([ATF7IP Products](#))

Background: ATF7IP is a multifunctional nuclear protein that associates with heterochromatin. It can act as a transcriptional coactivator or corepressor depending upon its binding partners (summary by Liu et al., 2009 [PubMed 19106100]).[supplied by OMIM, Nov 2010],ATF7IP,AM,ATF-IP,MCAF,MCAF1,p621,Epigenetics & Nuclear Signaling,ATF7IP

Molecular Weight: 118kDa/136kDa/137kDa

Gene ID: 55729

UniProt: [Q6VMQ6](#)

Application Details

Application Notes: WB,1:500 - 1:2000

Restrictions: For Research Use only

Handling

Format: Liquid

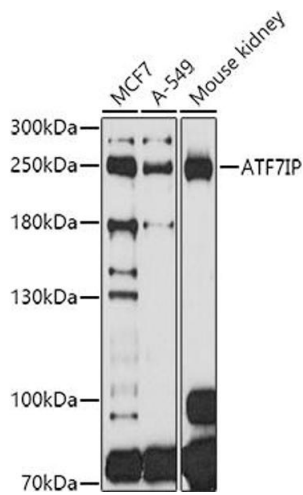
Buffer: PBS with 0.02 % sodium azide,50 % glycerol, pH 7.3.

Preservative: Sodium azide

Precaution of Use: This product contains Sodium azide: a POISONOUS AND HAZARDOUS SUBSTANCE which should be handled by trained staff only.

Storage: -20 °C

Storage Comment: Store at -20°C. Avoid freeze / thaw cycles.



Western Blotting

Image 1. Western blot analysis of extracts of various cell lines, using IP antibody at 1:1000 dilution. Secondary antibody: HRP Goat Anti-Rabbit IgG (H+L) (ABIN1684268 and ABIN3020597) at 1:10000 dilution. Lysates/proteins: 25 µg per lane. Blocking buffer: 3% nonfat dry milk in TBST. Detection: ECL Basic Kit (RM00020). Exposure time: 60s.