

Datasheet for ABIN7265433  
**anti-ADAM11 antibody (AA 290-430)**[Go to Product page](#)

## 3 Images

## Overview

Quantity:	100 µL
Target:	ADAM11
Binding Specificity:	AA 290-430
Reactivity:	Human
Host:	Rabbit
Clonality:	Polyclonal
Conjugate:	This ADAM11 antibody is un-conjugated
Application:	Western Blotting (WB), Immunofluorescence (IF)

## Product Details

Purpose:	ADAM11 Rabbit pAb
Immunogen:	Recombinant fusion protein containing a sequence corresponding to amino acids 290-430 of human ADAM11 (NP_002381.2).
Sequence:	METWADGDKI QVQDDLLET L ARLMVYRREG LPEPSDATHL FSGRTFQSTS SGAAYVGGIC SLSHGGGVNE YGNMGAMAVT LAQTLGQNLG MMWNKHRSSA GDCKCPDIWL GCIMEDTGFY LPRKFSRCSI DEYNQFLQEG G
Isotype:	IgG
Cross-Reactivity:	Human, Mouse, Rat
Characteristics:	Polyclonal Antibodies
Purification:	Affinity purification

## Target Details

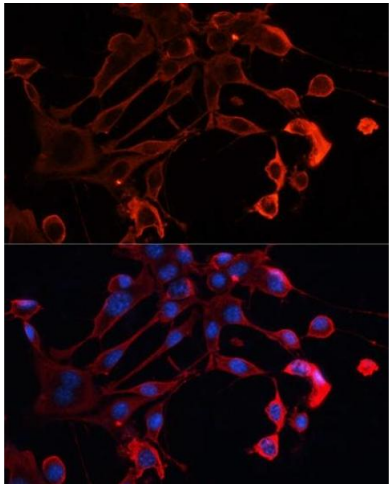
Target:	ADAM11
Alternative Name:	ADAM11 ( <a href="#">ADAM11 Products</a> )
Background:	<p>This gene encodes a member of the ADAM (a disintegrin and metalloprotease) protein family. Members of this family are membrane-anchored proteins structurally related to snake venom disintegrins, and have been implicated in a variety of biological processes involving cell-cell and cell-matrix interactions, including fertilization, muscle development, and neurogenesis. The encoded preproprotein is proteolytically processed to generate the mature protease. This gene represents a candidate tumor suppressor gene for human breast cancer based on its location within a minimal region of chromosome 17q21 previously defined by tumor deletion mapping. Alternative splicing results in multiple transcript variants, at least one of which encodes an isoform that is proteolytically processed.</p> <p>,ADAM11,MDC,Cancer,Invasion and Metastasis,Signal Transduction,Cell Biology &amp; Developmental Biology,Cytoskeleton,Extracellular Matrix,ADAM Protein Family,Ubiquitin,ADAM11</p>
Molecular Weight:	57kDa/83kDa
Gene ID:	4185
UniProt:	<a href="#">O75078</a>

## Application Details

Application Notes:	WB,1:500 - 1:2000,IF,1:50 - 1:200
Restrictions:	For Research Use only

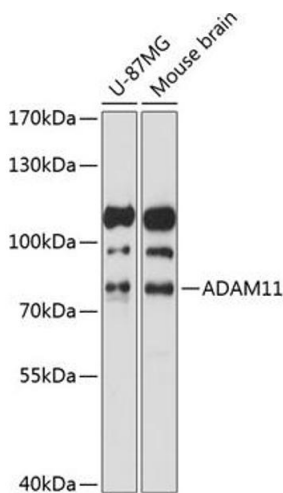
## Handling

Format:	Liquid
Buffer:	PBS with 0.02 % sodium azide,50 % glycerol, pH 7.3.
Preservative:	Sodium azide
Precaution of Use:	This product contains Sodium azide: a POISONOUS AND HAZARDOUS SUBSTANCE which should be handled by trained staff only.
Storage:	-20 °C
Storage Comment:	Store at -20°C. Avoid freeze / thaw cycles.



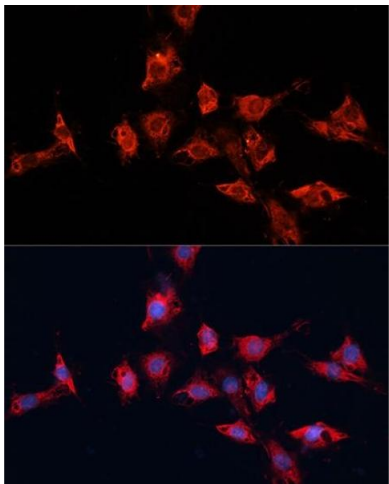
### Immunofluorescence

**Image 1.** Immunofluorescence analysis of NIH/3T3 cells using antibody (ABIN7265433) at dilution of 1:100. Blue: DAPI for nuclear staining.



### Western Blotting

**Image 2.** Western blot analysis of extracts of various cell lines, using antibody (ABIN7265433) at 1:1000 dilution. Secondary antibody: HRP Goat Anti-Rabbit IgG (H+L) (ABIN1684268 and ABIN3020597) at 1:10000 dilution. Lysates/proteins: 25 µg per lane. Blocking buffer: 3 % nonfat dry milk in TBST. Detection: ECL Basic Kit (RM00020). Exposure time: 15s.



### Immunofluorescence

**Image 3.** Immunofluorescence analysis of C6 cells using antibody (ABIN7265433) at dilution of 1:100. Blue: DAPI for nuclear staining.