

Datasheet for ABIN7265434

anti-ADAM15 antibody

6 Images

[Go to Product page](#)

Overview

Quantity:	100 µL
Target:	ADAM15
Reactivity:	Human
Host:	Rabbit
Clonality:	Monoclonal
Conjugate:	This ADAM15 antibody is un-conjugated
Application:	Western Blotting (WB), Immunohistochemistry (IHC), Immunofluorescence (IF)

Product Details

Purpose:	ADAM15 Rabbit mAb
Immunogen:	A synthesized peptide derived from human ADAM15
Isotype:	IgG
Cross-Reactivity:	Human, Mouse, Rat
Characteristics:	Monoclonal Antibodies
Purification:	Affinity purification

Target Details

Target:	ADAM15
Alternative Name:	ADAM15 (ADAM15 Products)
Background:	The protein encoded by this gene is a member of the ADAM (a disintegrin and

Target Details

metalloproteinase) protein family. ADAM family members are type I transmembrane glycoproteins known to be involved in cell adhesion and proteolytic ectodomain processing of cytokines and adhesion molecules. This protein contains multiple functional domains including a zinc-binding metalloprotease domain, a disintegrin-like domain, as well as a EGF-like domain. Through its disintegrin-like domain, this protein specifically interacts with the integrin beta chain, beta 3. It also interacts with Src family protein-tyrosine kinases in a phosphorylation-dependent manner, suggesting that this protein may function in cell-cell adhesion as well as in cellular signaling. Multiple alternatively spliced transcript variants encoding distinct isoforms have been observed. [provided by RefSeq, Jul 2008],MDC15,Cancer,Cell Adhesion,Cell Biology & Developmental Biology,Cytoskeleton,Extracellular Matrix,Extracellular Matrix_ADAM Protein Family,Invasion and Metastasis,Signal Transduction,Ubiquitin,ADAM15

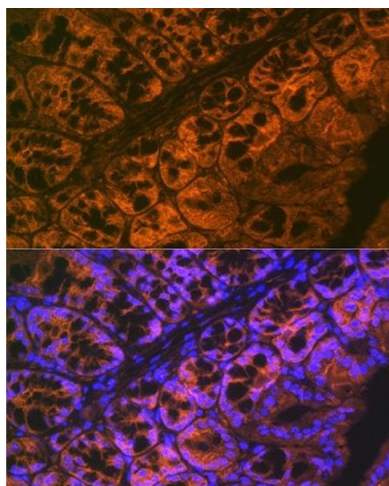
Molecular Weight:	90,100kDa
Gene ID:	8751
UniProt:	Q13444

Application Details

Application Notes:	WB,1:500 - 1:2000,IHC,1:50 - 1:200,IF,1:50 - 1:200
Restrictions:	For Research Use only

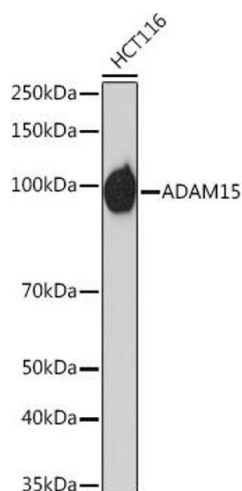
Handling

Format:	Liquid
Buffer:	PBS with 0.02 % sodium azide,0.05 % BSA,50 % glycerol, pH 7.3.
Preservative:	Sodium azide
Precaution of Use:	This product contains Sodium azide: a POISONOUS AND HAZARDOUS SUBSTANCE which should be handled by trained staff only.
Storage:	-20 °C
Storage Comment:	Store at -20°C. Avoid freeze / thaw cycles.



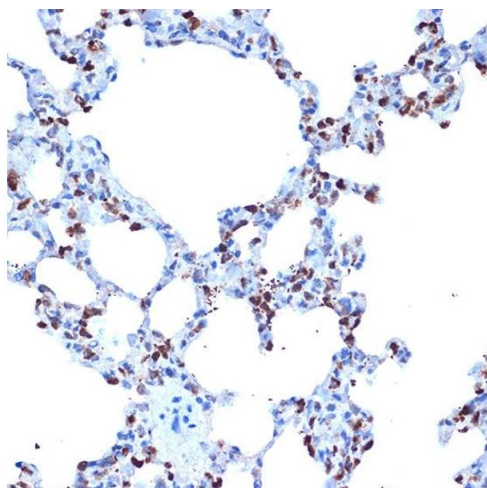
Immunofluorescence

Image 1. Immunofluorescence analysis of mouse large intestine using Rabbit mAb (ABIN7265434) at dilution of 1:100 (40x lens). Blue: DAPI for nuclear staining.



Western Blotting

Image 2. Western blot analysis of extracts of HCT116 cells, using Rabbit mAb (ABIN7265434) at 1:1000 dilution. Secondary antibody: HRP Goat Anti-Rabbit IgG (H+L) (ABIN1684268 and ABIN3020597) at 1:10000 dilution. Lysates/proteins: 25 µg per lane. Blocking buffer: 3 % nonfat dry milk in TBST. Detection: ECL Basic Kit (RM00020). Exposure time: 60s.



Immunohistochemistry

Image 3. Immunohistochemistry of paraffin-embedded rat lung using Rabbit mAb (ABIN7265434) at dilution of 1:100 (40x lens). Perform microwave antigen retrieval with 10 mM Tris/EDTA buffer pH 9.0 before commencing with IHC staining protocol.

Please check the [product details page](#) for more images. Overall 6 images are available for ABIN7265434.