



[Go to Product page](#)

Datasheet for ABIN7265436
anti-ADAM28 antibody (AA 199-440)

1 Image

Overview

Quantity:	100 µL
Target:	ADAM28
Binding Specificity:	AA 199-440
Reactivity:	Human
Host:	Rabbit
Clonality:	Polyclonal
Conjugate:	This ADAM28 antibody is un-conjugated
Application:	Western Blotting (WB), Immunohistochemistry (IHC)

Product Details

Purpose:	ADAM28 Rabbit pAb
Immunogen:	Recombinant fusion protein containing a sequence corresponding to amino acids 199-440 of human ADAM28 (NP_055080.2).
Sequence:	VQEHEKYIEY YLVLDNGEFK RYNENQDEIR KRVFEMANYV NMLYKKLNTH VALVGMEIWT DKDKIKITPN ASFTLENFSK WRGSVLSRRK RHDIAQLITA TELAGTTVGL AFMSTMCSPI SVGVVQDHSD NLLRVAGTMA HEMGHNFGMF HDDYSCKCPS TICVMDKALS FYIPTDFSSC SRLSYDKFFE DKLSNCLFNA PLPTDIISTP ICGNQLVEMG EDCDCGTSEE CTNICCDAKT CK
Isotype:	IgG
Cross-Reactivity:	Human, Mouse
Characteristics:	Polyclonal Antibodies

Product Details

Purification: Affinity purification

Target Details

Target: ADAM28

Alternative Name: ADAM28 ([ADAM28 Products](#))

Background: This gene encodes a member of the ADAM (a disintegrin and metalloprotease domain) family. Members of this family are membrane-anchored proteins structurally related to snake venom disintegrins, and have been implicated in a variety of biological processes involving cell-cell and cell-matrix interactions, including fertilization, muscle development, and neurogenesis. The protein encoded by this gene is a lymphocyte-expressed ADAM protein. This gene is present in a gene cluster with other members of the ADAM family on chromosome 8. Alternative splicing results in multiple transcript variants.,ADAM28,ADAM 28,MDC-L,MDCL,eMDC II,eMDCII,Cancer,Invasion and Metastasis,Signal Transduction,Cell Biology & Developmental Biology,Cytoskeleton,Extracellular Matrix,ADAM Protein Family,Ubiquitin,ADAM28

Molecular Weight: 61kDa/87kDa

Gene ID: 10863

UniProt: [Q9UKQ2](#)

Application Details

Application Notes: WB,1:500 - 1:2000,IHC,1:50 - 1:200

Restrictions: For Research Use only

Handling

Format: Liquid

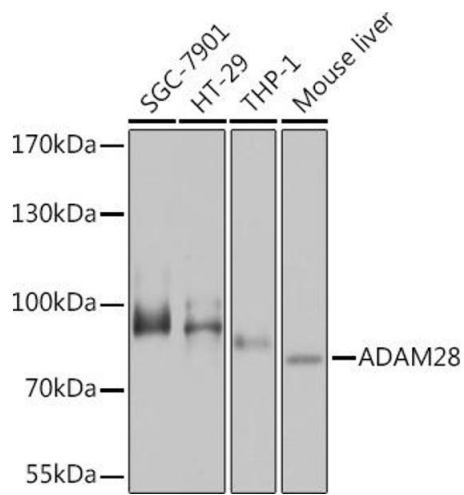
Buffer: PBS with 0.02 % sodium azide,50 % glycerol, pH 7.3.

Preservative: Sodium azide

Precaution of Use: This product contains Sodium azide: a POISONOUS AND HAZARDOUS SUBSTANCE which should be handled by trained staff only.

Storage: -20 °C

Storage Comment: Store at -20°C. Avoid freeze / thaw cycles.



Western Blotting

Image 1. Western blot analysis of extracts of various cell lines, using Rabbit pAb at 1:1000 dilution. Secondary antibody: HRP Goat Anti-Rabbit IgG (H+L) (ABIN1684268 and ABIN3020597) at 1:10000 dilution. Lysates/proteins: 25 µg per lane. Blocking buffer: 3% nonfat dry milk in TBST. Detection: ECL Basic Kit (RM00020). Exposure time: 5s.