

Datasheet for ABIN7265440
anti-ADAMTS13 antibody[Go to Product page](#)

4 Images

Overview

Quantity:	100 µL
Target:	ADAMTS13
Reactivity:	Human
Host:	Rabbit
Clonality:	Monoclonal
Conjugate:	This ADAMTS13 antibody is un-conjugated
Application:	Western Blotting (WB), Immunofluorescence (IF)

Product Details

Purpose:	ADAMTS13 Rabbit mAb
Immunogen:	A synthesized peptide derived from human ADAMTS13
Isotype:	IgG
Cross-Reactivity:	Human, Mouse, Rat
Characteristics:	Monoclonal Antibodies
Purification:	Affinity purification

Target Details

Target:	ADAMTS13
Alternative Name:	ADAMTS13 (ADAMTS13 Products)
Background:	This gene encodes a member of a family of proteins containing several distinct regions,

Target Details

including a metalloproteinase domain, a disintegrin-like domain, and a thrombospondin type 1 (TS) motif. The enzyme encoded by this gene specifically cleaves von Willebrand Factor (vWF). Defects in this gene are associated with thrombotic thrombocytopenic purpura. Alternative splicing results in multiple transcript variants. [provided by RefSeq, Jul 2013],ADAM-TS13, ADAMTS-13, C9orf8, VWFCP, vWF-CP,Cancer,Cell Biology & Developmental Biology,Cytoskeleton,Extracellular Matrix,Extracellular Matrix_ADAM Protein Family,Invasion and Metastasis,Signal Transduction,Ubiquitin,ADAMTS13

Molecular Weight: 154kDa

Gene ID: 11093

UniProt: [Q76LX8](#)

Application Details

Application Notes: WB,1:500 - 1:2000,IF,1:50 - 1:200

Restrictions: For Research Use only

Handling

Format: Liquid

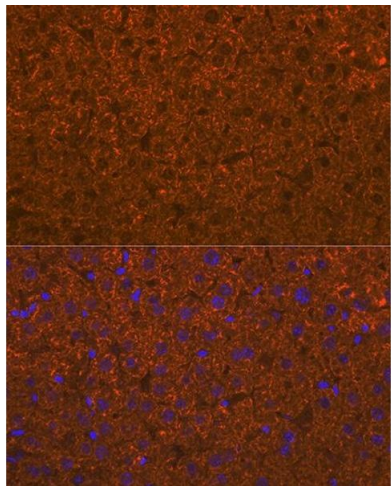
Buffer: PBS with 0.02 % sodium azide,0.05 % BSA,50 % glycerol, pH 7.3.

Preservative: Sodium azide

Precaution of Use: This product contains Sodium azide: a POISONOUS AND HAZARDOUS SUBSTANCE which should be handled by trained staff only.

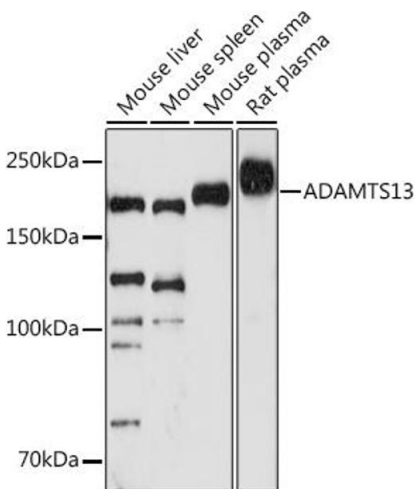
Storage: -20 °C

Storage Comment: Store at -20°C. Avoid freeze / thaw cycles.



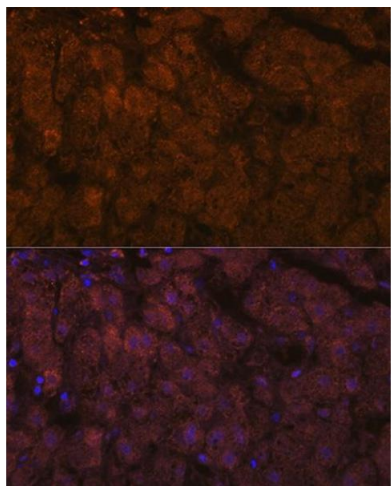
Immunofluorescence

Image 1. Immunofluorescence analysis of mouse liver using Rabbit mAb (ABIN7265440) at dilution of 1:100 (40x lens). Blue: DAPI for nuclear staining.



Western Blotting

Image 2. Western blot analysis of extracts of various cell lines, using antibody (ABIN7265440) at 1:1000 dilution. Secondary antibody: HRP Goat Anti-Rabbit IgG (H+L) (ABIN1684268 and ABIN3020597) at 1:10000 dilution. Lysates/proteins: 25 µg per lane. Blocking buffer: 3 % nonfat dry milk in TBST. Detection: ECL Enhanced Kit (RM00021). Exposure time: 180s.



Immunofluorescence

Image 3. Immunofluorescence analysis of human liver using Rabbit mAb (ABIN7265440) at dilution of 1:100 (40x lens). Blue: DAPI for nuclear staining.

Please check the [product details page](#) for more images. Overall 4 images are available for ABIN7265440.