

Datasheet for ABIN7265445
anti-AP1B1 antibody (AA 700-800)[Go to Product page](#)

1 Image

Overview

Quantity:	100 µL
Target:	AP1B1
Binding Specificity:	AA 700-800
Reactivity:	Human
Host:	Rabbit
Clonality:	Polyclonal
Conjugate:	This AP1B1 antibody is un-conjugated
Application:	Western Blotting (WB)

Product Details

Purpose:	AP1B1 Rabbit pAb
Immunogen:	A synthetic peptide corresponding to a sequence within amino acids 700-800 of human AP1B1 (NP_001118.3).
Sequence:	SDLFDLTSGV GTLSGSYVAP KAVWLPAMKA KGLEISGTFT RQVGSISMDL QLTNKALQVM TDFAIQFNRR SFGLAPAAPL QVHAPLSPNQ TVEISLPLST V
Isotype:	IgG
Cross-Reactivity:	Human, Mouse, Rat
Characteristics:	Polyclonal Antibodies
Purification:	Affinity purification

Target Details

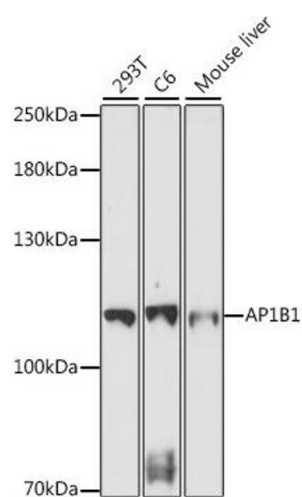
Target:	AP1B1
Alternative Name:	AP1B1 (AP1B1 Products)
Background:	<p>Adaptor protein complex 1 is found at the cytoplasmic face of coated vesicles located at the Golgi complex, where it mediates both the recruitment of clathrin to the membrane and the recognition of sorting signals within the cytosolic tails of transmembrane receptors. This complex is a heterotetramer composed of two large, one medium, and one small adaptin subunit. The protein encoded by this gene serves as one of the large subunits of this complex and is a member of the adaptin protein family. This gene is a candidate meningioma gene. Alternative splicing results in multiple transcript variants.,AP1B1,ADTB1,AP105A,BAM22,CLAPB2,AP1B1</p>
Molecular Weight:	101kDa/103kDa/104kDa
Gene ID:	162
UniProt:	Q10567

Application Details

Application Notes:	WB,1:500 - 1:2000
Restrictions:	For Research Use only

Handling

Format:	Liquid
Buffer:	PBS with 0.02 % sodium azide,50 % glycerol, pH 7.3.
Preservative:	Sodium azide
Precaution of Use:	This product contains Sodium azide: a POISONOUS AND HAZARDOUS SUBSTANCE which should be handled by trained staff only.
Storage:	-20 °C
Storage Comment:	Store at -20°C. Avoid freeze / thaw cycles.



Western Blotting

Image 1. Western blot analysis of extracts of various cell lines, using B1 antibody (ABIN7265445) at 1:1000 dilution. Secondary antibody: HRP Goat Anti-Rabbit IgG (H+L) (ABIN1684268 and ABIN3020597) at 1:10000 dilution. Lysates/proteins: 25 µg per lane. Blocking buffer: 3 % nonfat dry milk in TBST. Detection: ECL Basic Kit (RM00020). Exposure time: 5 min.