



[Go to Product page](#)

Datasheet for ABIN7265446

anti-gamma 1 Adaptin antibody

3 Images

Overview

Quantity:	100 µL
Target:	gamma 1 Adaptin (AP1G1)
Reactivity:	Human
Host:	Rabbit
Clonality:	Monoclonal
Conjugate:	This gamma 1 Adaptin antibody is un-conjugated
Application:	Western Blotting (WB), Immunohistochemistry (IHC)

Product Details

Purpose:	AP1G1 Rabbit mAb
Immunogen:	Recombinant protein of human AP1G1.
Isotype:	IgG
Cross-Reactivity:	Human, Mouse, Rat
Characteristics:	Monoclonal Antibodies
Purification:	Affinity purification

Target Details

Target:	gamma 1 Adaptin (AP1G1)
Alternative Name:	AP1G1 (AP1G1 Products)
Background:	AP1G1

Target Details

Molecular Weight:	100kDa
Gene ID:	164
UniProt:	O43747

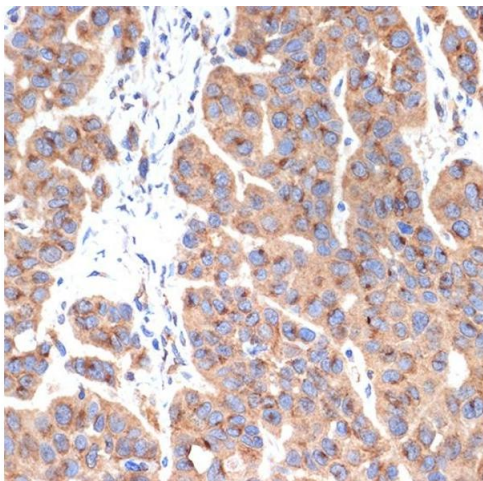
Application Details

Application Notes:	WB,1:500 - 1:2000,IHC,1:50 - 1:200
Restrictions:	For Research Use only

Handling

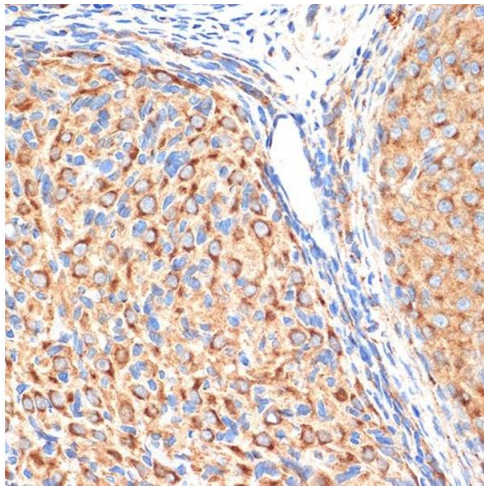
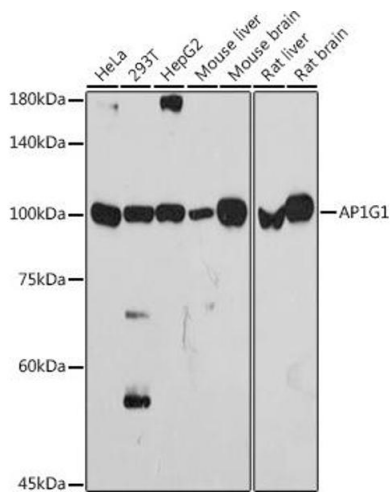
Format:	Liquid
Buffer:	PBS with 0.02 % sodium azide,0.05 % BSA,50 % glycerol, pH 7.3.
Preservative:	Sodium azide
Precaution of Use:	This product contains Sodium azide: a POISONOUS AND HAZARDOUS SUBSTANCE which should be handled by trained staff only.
Storage:	-20 °C
Storage Comment:	Store at -20°C. Avoid freeze / thaw cycles.

Images



Immunohistochemistry

Image 1. Immunohistochemistry of paraffin-embedded human esophageal cancer using G1 Rabbit mAb (ABIN7265446) at dilution of 1:100 (40x lens). Perform microwave antigen retrieval with 10 mM Tris/EDTA buffer pH 9.0 before commencing with IHC staining protocol.



Western Blotting

Image 2. Western blot analysis of extracts of various cell lines, using G1 antibody (ABIN7265446) at 1:1000 dilution. Secondary antibody: HRP Goat Anti-Rabbit IgG (H+L) (ABIN1684268 and ABIN3020597) at 1:10000 dilution. Lysates/proteins: 25 µg per lane. Blocking buffer: 3 % nonfat dry milk in TBST. Detection: ECL Basic Kit (RM00020). Exposure time: 90s.

Immunohistochemistry

Image 3. Immunohistochemistry of paraffin-embedded rat ovary using G1 Rabbit mAb (ABIN7265446) at dilution of 1:100 (40x lens). Perform microwave antigen retrieval with 10 mM Tris/EDTA buffer pH 9.0 before commencing with IHC staining protocol.