

Datasheet for ABIN7265453

anti-ADORA1 antibody

4 Images

[Go to Product page](#)

Overview

Quantity:	100 µL
Target:	ADORA1
Reactivity:	Human
Host:	Rabbit
Clonality:	Monoclonal
Conjugate:	This ADORA1 antibody is un-conjugated
Application:	Western Blotting (WB), Immunohistochemistry (IHC)

Product Details

Purpose:	ADORA1 Rabbit mAb
Immunogen:	A synthesized peptide derived from human ADORA1
Isotype:	IgG
Cross-Reactivity:	Human, Mouse, Rat
Characteristics:	Monoclonal Antibodies
Purification:	Affinity purification

Target Details

Target:	ADORA1
Alternative Name:	ADORA1 (ADORA1 Products)
Background:	The protein encoded by this gene is an adenosine receptor that belongs to the G-protein

Target Details

coupled receptor 1 family. There are 3 types of adenosine receptors, each with a specific pattern of ligand binding and tissue distribution, and together they regulate a diverse set of physiologic functions. The type A1 receptors inhibit adenylyl cyclase, and play a role in the fertilization process. Animal studies also suggest a role for A1 receptors in kidney function and ethanol intoxication. Transcript variants with alternative splicing in the 5' UTR have been found for this gene. [provided by RefSeq, Jul 2008],RDC7,Apoptosis,Cardiovascular,Cell Biology & Developmental Biology,Cell Intrinsic Innate Immunity Signaling Pathway,G protein signaling,G protein signaling_G-Protein-Coupled Receptors(GPCR),Heart,Heart_Cardiac arrhythmias,Immunology & Inflammation,Neuroscience,Signal Transduction,ADORA1

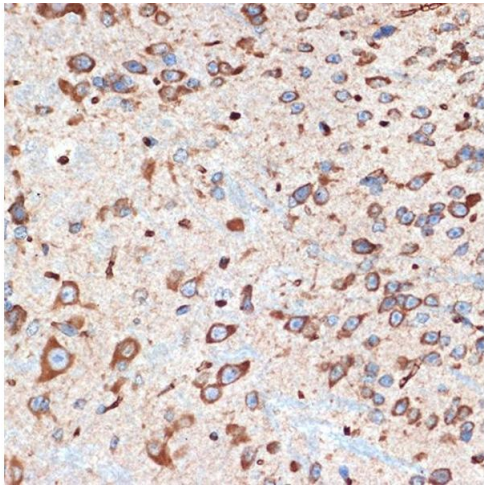
Molecular Weight:	37kDa
Gene ID:	134
UniProt:	P30542
Pathways:	EGFR Signaling Pathway , Negative Regulation of Hormone Secretion , Synaptic Membrane

Application Details

Application Notes:	WB,1:500 - 1:2000,IHC,1:50 - 1:200
Restrictions:	For Research Use only

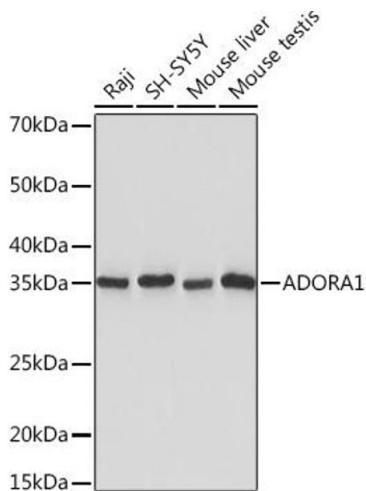
Handling

Format:	Liquid
Buffer:	PBS with 0.02 % sodium azide,0.05 % BSA,50 % glycerol, pH 7.3.
Preservative:	Sodium azide
Precaution of Use:	This product contains Sodium azide: a POISONOUS AND HAZARDOUS SUBSTANCE which should be handled by trained staff only.
Storage:	-20 °C
Storage Comment:	Store at -20°C. Avoid freeze / thaw cycles.



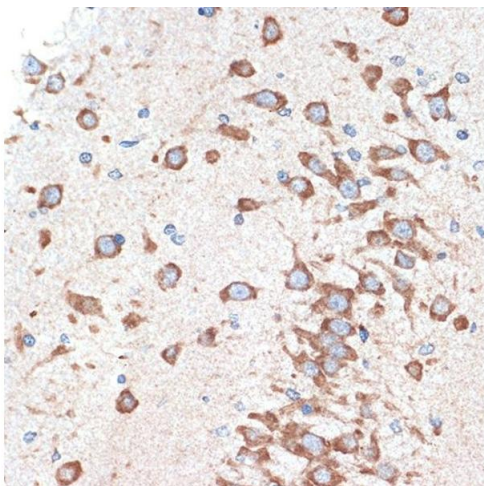
Immunohistochemistry

Image 1. Immunohistochemistry of paraffin-embedded mouse spinal cord using Rabbit mAb (ABIN7265453) at dilution of 1:100 (40x lens). Perform microwave antigen retrieval with 10 mM Tris/EDTA buffer pH 9.0 before commencing with IHC staining protocol.



Western Blotting

Image 2. Western blot analysis of extracts of various cell lines, using Rabbit mAb (ABIN7265453) at 1:1000 dilution. Secondary antibody: HRP Goat Anti-Rabbit IgG (H+L) (ABIN1684268 and ABIN3020597) at 1:10000 dilution. Lysates/proteins: 25 µg per lane. Blocking buffer: 3 % nonfat dry milk in TBST. Detection: ECL Basic Kit (RM00020). Exposure time: 10s.



Immunohistochemistry

Image 3. Immunohistochemistry of paraffin-embedded rat brain using Rabbit mAb (ABIN7265453) at dilution of 1:100 (40x lens). Perform microwave antigen retrieval with 10 mM Tris/EDTA buffer pH 9.0 before commencing with IHC staining protocol.

Please check the [product details page](#) for more images. Overall 4 images are available for ABIN7265453.