



[Go to Product page](#)

Datasheet for ABIN7265455

anti-Adenosine A2b Receptor antibody (AA 100-200)

2 Images

Overview

Quantity:	100 µL
Target:	Adenosine A2b Receptor (ADORA2B)
Binding Specificity:	AA 100-200
Reactivity:	Human
Host:	Rabbit
Clonality:	Polyclonal
Conjugate:	This Adenosine A2b Receptor antibody is un-conjugated
Application:	Western Blotting (WB), Immunofluorescence (IF)

Product Details

Purpose:	ADORA2B Rabbit pAb
Immunogen:	A synthetic peptide corresponding to a sequence within amino acids 100-200 of human ADORA2B (NP_000667.1).
Sequence:	AVDRYLAICV PLRYKSLVTG TRARGVIAVL WVLAFGIGLT PFLGWNSKDS ATNNCTEPWD GTTNESCCLV KCLFENVVPM SYMVYFNFFG CVLPPLLIML V
Isotype:	IgG
Cross-Reactivity:	Mouse, Rat
Characteristics:	Polyclonal Antibodies
Purification:	Affinity purification

Target Details

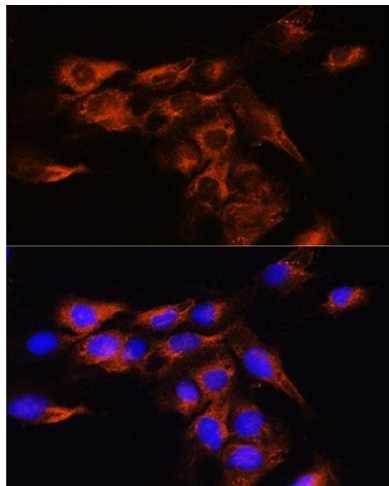
Target:	Adenosine A2b Receptor (ADORA2B)
Alternative Name:	ADORA2B (ADORA2B Products)
Background:	This gene encodes an adenosine receptor that is a member of the G protein-coupled receptor superfamily. This integral membrane protein stimulates adenylate cyclase activity in the presence of adenosine. This protein also interacts with netrin-1, which is involved in axon elongation. The gene is located near the Smith-Magenis syndrome region on chromosome 17.,ADORA2B,ADORA2,Epigenetics & Nuclear Signaling,Cancer,Invasion and Metastasis,Signal Transduction,G protein signaling,G-Protein-Coupled Receptors(GPCR),Endocrine & Metabolism,Cardiovascular,Hypoxia,Hypoxia-related proteins,Hypoxia-Regulated,ADORA2B
Molecular Weight:	36kDa
Gene ID:	136
UniProt:	P29275
Pathways:	cAMP Metabolic Process , Regulation of Leukocyte Mediated Immunity , Positive Regulation of Immune Effector Process

Application Details

Application Notes:	WB,1:500 - 1:2000,IF,1:50 - 1:200
Restrictions:	For Research Use only

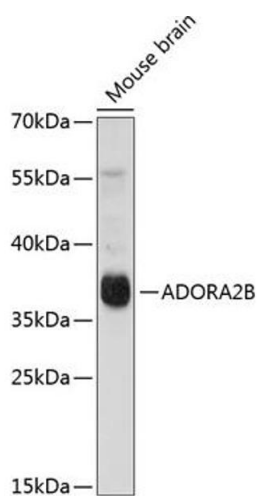
Handling

Format:	Liquid
Buffer:	PBS with 0.02 % sodium azide,50 % glycerol, pH 7.3.
Preservative:	Sodium azide
Precaution of Use:	This product contains Sodium azide: a POISONOUS AND HAZARDOUS SUBSTANCE which should be handled by trained staff only.
Storage:	-20 °C
Storage Comment:	Store at -20°C. Avoid freeze / thaw cycles.



Immunofluorescence

Image 1. Immunofluorescence analysis of C6 cells using B Rabbit pAb (ABIN7265455) at dilution of 1:100. Blue: DAPI for nuclear staining.



Western Blotting

Image 2. Western blot analysis of extracts of mouse brain, using B antibody (ABIN7265455) at 1:1000 dilution. Secondary antibody: HRP Goat Anti-Rabbit IgG (H+L) (ABIN1684268 and ABIN3020597) at 1:10000 dilution. Lysates/proteins: 25 µg per lane. Blocking buffer: 3 % nonfat dry milk in TBST. Detection: ECL Enhanced Kit (RM00021). Exposure time: 30s.