



[Go to Product page](#)

Datasheet for ABIN7265465
anti-ADCY10 antibody

1 Image

Overview

Quantity:	100 µL
Target:	ADCY10
Reactivity:	Human
Host:	Rabbit
Clonality:	Polyclonal
Conjugate:	This ADCY10 antibody is un-conjugated
Application:	Western Blotting (WB)

Product Details

Purpose:	ADCY10 Rabbit pAb
Immunogen:	Recombinant protein of human ADCY10.
Isotype:	IgG
Cross-Reactivity:	Human, Mouse
Characteristics:	Polyclonal Antibodies
Purification:	Affinity purification

Target Details

Target:	ADCY10
Alternative Name:	ADCY10 (ADCY10 Products)
Background:	The protein encoded by this gene belongs to a distinct class of adenylyl cyclases that is soluble

Target Details

and insensitive to G protein or forskolin regulation. Activity of this protein is regulated by bicarbonate. Variation at this gene has been observed in patients with absorptive hypercalciuria. Alternatively spliced transcript variants encoding different isoforms have been observed. There is a pseudogene of this gene on chromosome 6. [provided by RefSeq, Jul 2014],HCA2,HEL-S-7a,SAC,SACI,Sacy,hsAC,ADCY10,Cancer,Endocrine & Metabolism,G protein signaling,G protein signaling_G-Protein-Coupled Receptors Signaling to MAPK/Erk,Neurodegenerative Diseases,Neurodegenerative Diseases_Dopamine Signaling in Parkinsons Disease,Neuroscience,Signal Transduction,ADCY10

Gene ID: 55811

UniProt: [Q96PN6](#)

Pathways: [cAMP Metabolic Process](#)

Application Details

Application Notes: WB,1:500 - 1:2000

Restrictions: For Research Use only

Handling

Format: Liquid

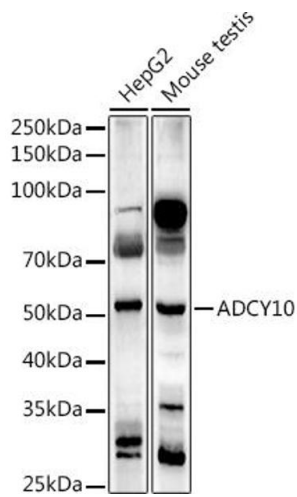
Buffer: PBS with 0.02 % sodium azide,50 % glycerol, pH 7.3.

Preservative: Sodium azide

Precaution of Use: This product contains Sodium azide: a POISONOUS AND HAZARDOUS SUBSTANCE which should be handled by trained staff only.

Storage: -20 °C

Storage Comment: Store at -20°C. Avoid freeze / thaw cycles.



Western Blotting

Image 1. Western blot analysis of extracts of various cell lines, using antibody (ABIN7265465) at 1:1000 dilution. Secondary antibody: HRP Goat Anti-Rabbit IgG (H+L) (ABIN1684268 and ABIN3020597) at 1:10000 dilution. Lysates/proteins: 25 µg per lane. Blocking buffer: 3 % nonfat dry milk in TBST. Detection: ECL Basic Kit (RM00020). Exposure time: 180s.