

Datasheet for ABIN7265476
anti-ARL1 antibody (AA 62-181)

3 Images

[Go to Product page](#)

Overview

Quantity:	100 µL
Target:	ARL1
Binding Specificity:	AA 62-181
Reactivity:	Human
Host:	Rabbit
Clonality:	Polyclonal
Conjugate:	This ARL1 antibody is un-conjugated
Application:	Western Blotting (WB), Immunohistochemistry (IHC), Immunofluorescence (IF)

Product Details

Purpose:	ARL1 Rabbit pAb
Immunogen:	Recombinant fusion protein containing a sequence corresponding to amino acids 62-181 of human ARL1 (NP_001168.1).
Sequence:	KFQVWDLGGQ TSIRPYWRCY YSNTDAVIYV VDSCDRDRIG ISKSELVAML EEEELRKAIL VVFANKQDME QAMTSSEMAN SLGLPALKDR KWQIFKTSAT KGTGLDEAME WLVELTKSRQ
Isotype:	IgG
Cross-Reactivity:	Human, Mouse, Rat
Characteristics:	Polyclonal Antibodies
Purification:	Affinity purification

Target Details

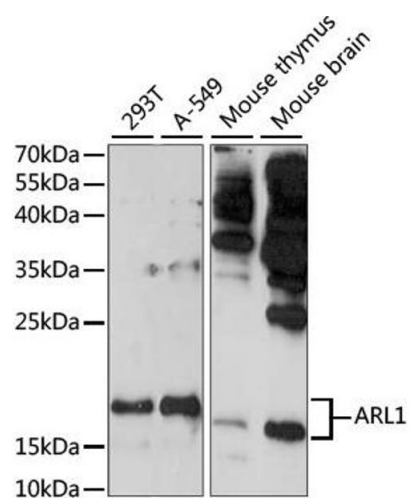
Target:	ARL1
Alternative Name:	ARL1 (ARL1 Products)
Background:	The protein encoded by this gene belongs to the ARL (ADP-ribosylation factor-like) family of proteins, which are structurally related to ADP-ribosylation factors (ARFs). ARFs, described as activators of cholera toxin (CT) ADP-ribosyltransferase activity, regulate intracellular vesicular membrane trafficking, and stimulate a phospholipase D (PLD) isoform. Although, ARL proteins were initially thought not to activate CT or PLD, later work showed that they are weak stimulators of PLD and CT in a phospholipid dependent manner. Alternative splicing results in multiple transcript variants encoding different isoforms.,ARL1,ARFL1,Signal Transduction,ARL1
Molecular Weight:	18kDa/20kDa
Gene ID:	400
UniProt:	P40616

Application Details

Application Notes:	WB,1:200 - 1:2000,IHC,1:50 - 1:200,IF,1:50 - 1:200
Restrictions:	For Research Use only

Handling

Format:	Liquid
Buffer:	PBS with 0.02 % sodium azide,50 % glycerol, pH 7.3.
Preservative:	Sodium azide
Precaution of Use:	This product contains Sodium azide: a POISONOUS AND HAZARDOUS SUBSTANCE which should be handled by trained staff only.
Storage:	-20 °C
Storage Comment:	Store at -20°C. Avoid freeze / thaw cycles.

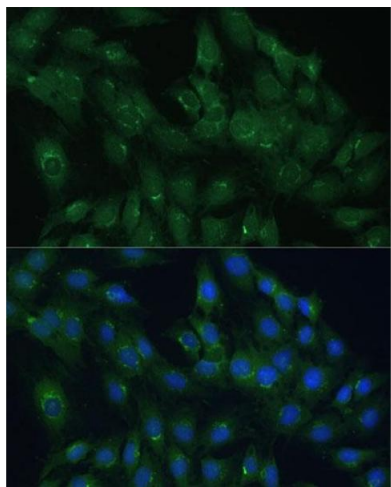


Western Blotting

Image 1. Western blot analysis of extracts of various cell lines, using antibody (ABIN7265476) at 1:1000 dilution. Secondary antibody: HRP Goat Anti-Rabbit IgG (H+L) (ABIN1684268 and ABIN3020597) at 1:10000 dilution. Lysates/proteins: 25 µg per lane. Blocking buffer: 3 % nonfat dry milk in TBST. Detection: ECL Basic Kit (RM00020). Exposure time: 3 min.

Immunofluorescence

Image 2. Immunofluorescence analysis of C6 cells using Polyclonal Antibody (ABIN7265476) at dilution of 1:100 (40x lens). Blue: DAPI for nuclear staining.



Immunofluorescence

Image 3. Immunofluorescence analysis of L929 cells using Polyclonal Antibody (ABIN7265476) at dilution of 1:100 (40x lens). Blue: DAPI for nuclear staining.

