

Datasheet for ABIN7265482
anti-ARF4 antibody (AA 1-180)

3 Images

[Go to Product page](#)

Overview

Quantity:	100 µL
Target:	ARF4
Binding Specificity:	AA 1-180
Reactivity:	Human
Host:	Rabbit
Clonality:	Polyclonal
Conjugate:	This ARF4 antibody is un-conjugated
Application:	Western Blotting (WB), Immunofluorescence (IF)

Product Details

Purpose:	ARF4 Rabbit pAb
Immunogen:	Recombinant fusion protein containing a sequence corresponding to amino acids 1-180 of human ARF4 (NP_001651.1).
Sequence:	MGLTISSLFS RLFGKKQMRI LMVGLDAAGK TTILYKLKLG EIVTTIPTIG FNVETVEYKN ICFTVWDVGG QDRIRPLWKH YFQNTQGLIF VVDSNDRERI QEVADELQKM LLVDELRLDAV LLLFANKQDL PNAMAISEMT DKLGLQSLRN RTWYVQATCA TQGTGLYEG L DWLSNELSKR
Isotype:	IgG
Cross-Reactivity:	Human, Mouse, Rat
Characteristics:	Polyclonal Antibodies
Purification:	Affinity purification

Target Details

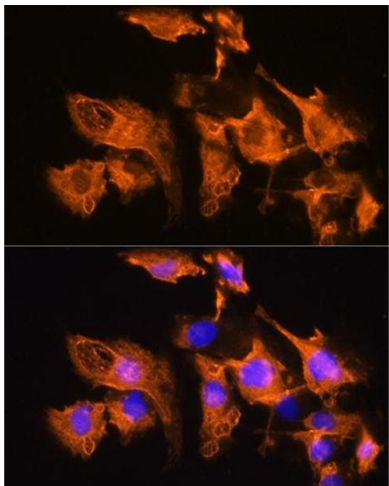
Target:	ARF4
Alternative Name:	ARF4 (ARF4 Products)
Background:	<p>This gene is a member of the human ARF gene family whose members encode small guanine nucleotide-binding proteins that stimulate the ADP-ribosyltransferase activity of cholera toxin and play a role in vesicular trafficking and as activators of phospholipase D. The gene products include 5 ARF proteins and 11 ARF-like proteins and constitute one family of the RAS superfamily. The ARF proteins are categorized as class I, class II and class III, this gene is a class II member. The members of each class share a common gene organization. The ARF4 gene spans approximately 12kb and contains six exons and five introns. This gene is the most divergent member of the human ARFs. Conflicting map positions at 3p14 or 3p21 have been reported for this gene.,ARF4,ARF2,Signal Transduction,ARF4</p>
Molecular Weight:	20kDa
Gene ID:	378
UniProt:	P18085
Pathways:	EGFR Signaling Pathway , Transition Metal Ion Homeostasis

Application Details

Application Notes:	WB,1:500 - 1:2000,IF,1:50 - 1:200
Restrictions:	For Research Use only

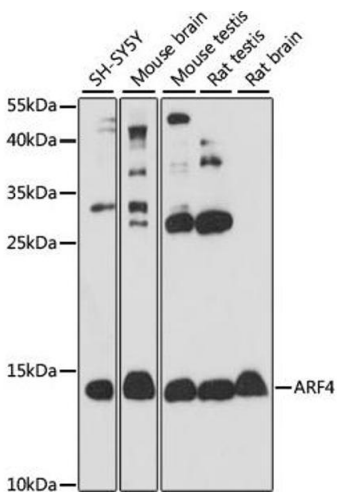
Handling

Format:	Liquid
Buffer:	PBS with 0.02 % sodium azide,50 % glycerol, pH 7.3.
Preservative:	Sodium azide
Precaution of Use:	This product contains Sodium azide: a POISONOUS AND HAZARDOUS SUBSTANCE which should be handled by trained staff only.
Storage:	-20 °C
Storage Comment:	Store at -20°C. Avoid freeze / thaw cycles.



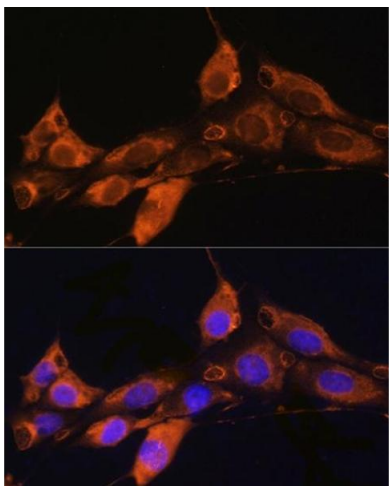
Immunofluorescence

Image 1. Immunofluorescence analysis of C6 cells using Rabbit pAb (ABIN7265482) at dilution of 1:100. Blue: DAPI for nuclear staining.



Western Blotting

Image 2. Western blot analysis of extracts of various cell lines, using antibody (ABIN7265482) at 1:1000 dilution. Secondary antibody: HRP Goat Anti-Rabbit IgG (H+L) (ABIN1684268 and ABIN3020597) at 1:10000 dilution. Lysates/proteins: 25 µg per lane. Blocking buffer: 3 % nonfat dry milk in TBST. Detection: ECL Basic Kit (RM00020). Exposure time: 30s.



Immunofluorescence

Image 3. Immunofluorescence analysis of NIH/3T3 cells using Rabbit pAb (ABIN7265482) at dilution of 1:100. Blue: DAPI for nuclear staining.