

Datasheet for ABIN7265492  
**anti-ARL2BP antibody (AA 1-100)**[Go to Product page](#)

## 1 Image

## Overview

Quantity:	100 µL
Target:	ARL2BP
Binding Specificity:	AA 1-100
Reactivity:	Human
Host:	Rabbit
Clonality:	Polyclonal
Conjugate:	This ARL2BP antibody is un-conjugated
Application:	Western Blotting (WB)

## Product Details

Purpose:	ARL2BP Rabbit pAb
Immunogen:	A synthetic peptide corresponding to a sequence within amino acids 1-100 of human ARL2BP (NP_036238.1).
Sequence:	MDALEGESFA LSFSSASDAE FDAVVGYLEE IIMDDEFQLL QRNFMDKYYL EFEDTEENKL IYTPIFNEYI SLVEKYIEEQ LLQRIPEFNM AAFTTTLQHH
Isotype:	IgG
Cross-Reactivity:	Human
Characteristics:	Polyclonal Antibodies
Purification:	Affinity purification

## Target Details

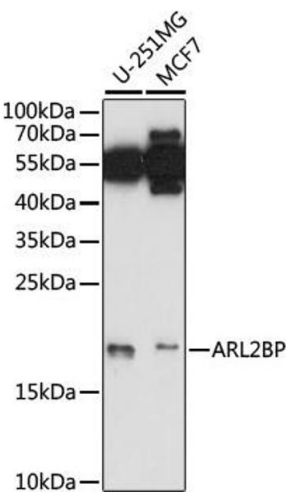
Target:	ARL2BP
Alternative Name:	ARL2BP ( <a href="#">ARL2BP Products</a> )
Background:	ADP-ribosylation factor (ARF)-like proteins (ARLs) comprise a functionally distinct group of the ARF family of RAS-related GTPases. The protein encoded by this gene binds to ARL2.GTP with high affinity but does not interact with ARL2.GDP, activated ARF, or RHO proteins. The lack of detectable membrane association of this protein or ARL2 upon activation of ARL2 is suggestive of actions distinct from those of the ARFs. This protein is considered to be the first ARL2-specific effector identified, due to its interaction with ARL2.GTP but lack of ARL2 GTPase-activating protein activity.,ARL2BP,BART,BART1,RP66,Signal Transduction,G protein signaling,Signal Transduction,Cell Biology & Developmental Biology,Cell Cycle,Centrosome,ARL2BP
Molecular Weight:	17kDa/18kDa
Gene ID:	23568
UniProt:	<a href="#">Q9Y2Y0</a>
Pathways:	<a href="#">Maintenance of Protein Location</a>

## Application Details

Application Notes:	WB,1:500 - 1:2000
Restrictions:	For Research Use only

## Handling

Format:	Liquid
Buffer:	PBS with 0.02 % sodium azide,50 % glycerol, pH 7.3.
Preservative:	Sodium azide
Precaution of Use:	This product contains Sodium azide: a POISONOUS AND HAZARDOUS SUBSTANCE which should be handled by trained staff only.
Storage:	-20 °C
Storage Comment:	Store at -20°C. Avoid freeze / thaw cycles.



Western Blotting

**Image 1.** Western blot analysis of extracts of various cell lines, using BP antibody (ABIN7265492) at 1:1000 dilution. Secondary antibody: HRP Goat Anti-Rabbit IgG (H+L) (ABIN1684268 and ABIN3020597) at 1:10000 dilution. Lysates/proteins: 25 µg per lane. Blocking buffer: 3 % nonfat dry milk in TBST. Detection: ECL Basic Kit (RM00020). Exposure time: 90s.