

Datasheet for ABIN7265520
anti-AKT 1/2/3 antibody



[Go to Product page](#)

7 Images

Overview

Quantity:	100 µL
Target:	AKT 1/2/3
Reactivity:	Human
Host:	Rabbit
Clonality:	Polyclonal
Conjugate:	This AKT 1/2/3 antibody is un-conjugated
Application:	Western Blotting (WB), Immunohistochemistry (IHC), Immunofluorescence (IF), Immunoprecipitation (IP)

Product Details

Purpose:	Pan-Akt Rabbit pAb
Immunogen:	A synthetic peptide of human AKT1/AKT2/AKT3
Isotype:	IgG
Cross-Reactivity:	Human, Mouse, Rat
Characteristics:	Polyclonal Antibodies
Purification:	Affinity purification

Target Details

Target:	AKT 1/2/3
Alternative Name:	AKT1/AKT2/AKT3 (AKT 1/2/3 Products)

Target Details

Background: Human AKT serine-threonine protein kinase family includes three members AKT1, AKT2, AKT3, which are also often referred to as protein kinase B alpha, beta, and gamma. These highly similar AKT proteins all have an N-terminal pleckstrin homology domain, a serine/threonine-specific kinase domain and a C-terminal regulatory domain. These proteins are phosphorylated by phosphoinositide 3-kinase (PI3K). AKT/PI3K forms a key component of many signalling pathways that involve the binding of membrane-bound ligands such as receptor tyrosine kinases, G-protein coupled receptors, and integrin-linked kinase. These AKT proteins therefore regulate a wide variety of cellular functions including cell proliferation, survival, metabolism, and angiogenesis in both normal and malignant cells. AKT proteins are recruited to the cell membrane by phosphatidylinositol 3,4,5-trisphosphate (PIP3) after phosphorylation of phosphatidylinositol 4,5-bisphosphate (PIP2) by PI3K. Subsequent phosphorylation of both threonine residue 308 and serine residue 473 is required for full activation of the AKT1 protein encoded by this gene.,AKT1/AKT2/AKT3,Protein phosphorylation,AKT1/AKT2/AKT3

Molecular Weight: 48kDa/55kDa/51kDa/54kDa

Gene ID: 207, 208, 10000

UniProt: [P31749](#), [P31751](#), [Q9Y243](#)

Application Details

Application Notes: WB,1:500 - 1:1000,IHC,1:50 - 1:100,IF,1:50 - 1:100,IP,1:50 - 1:100

Restrictions: For Research Use only

Handling

Format: Liquid

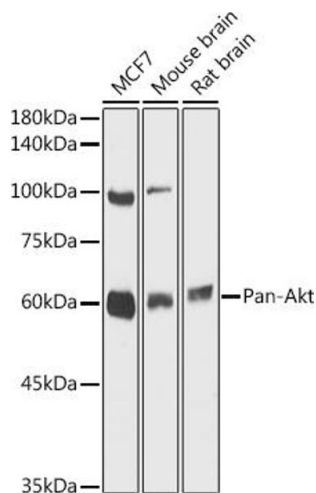
Buffer: PBS with 0.02 % sodium azide,50 % glycerol, pH 7.3.

Preservative: Sodium azide

Precaution of Use: This product contains Sodium azide: a POISONOUS AND HAZARDOUS SUBSTANCE which should be handled by trained staff only.

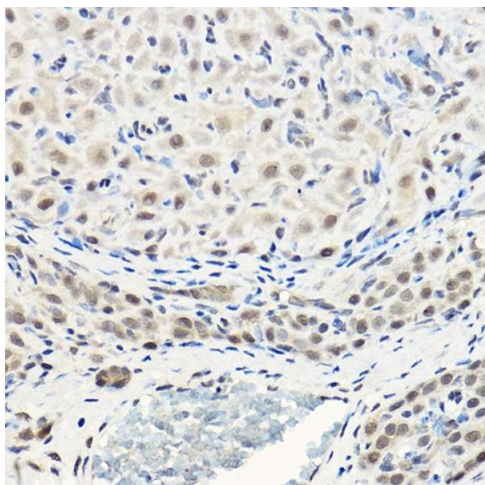
Storage: -20 °C

Storage Comment: Store at -20°C. Avoid freeze / thaw cycles.



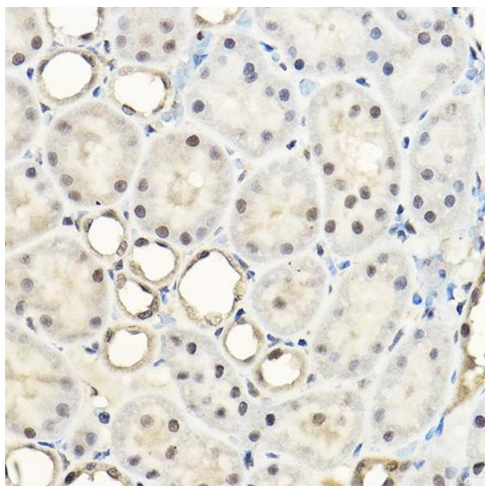
Western Blotting

Image 1. Western blot analysis of extracts of various cell lines, using Pan-Akt antibody (ABIN7265520) at 1:1000 dilution. Secondary antibody: HRP Goat Anti-Rabbit IgG (H+L) (ABIN1684268 and ABIN3020597) at 1:10000 dilution. Lysates/proteins: 25 µg per lane. Blocking buffer: 3 % nonfat dry milk in TBST. Detection: ECL Basic Kit (RM00020). Exposure time: 30s.



Immunohistochemistry

Image 2. Immunohistochemistry of paraffin-embedded rat ovary using Pan-Akt Rabbit pAb (ABIN7265520) at dilution of 1:100 (40x lens). Perform high pressure antigen retrieval with 10 mM citrate buffer pH 6.0 before commencing with IHC staining protocol.



Immunohistochemistry

Image 3. Immunohistochemistry of paraffin-embedded rat kidney using Pan-Akt Rabbit pAb (ABIN7265520) at dilution of 1:100 (40x lens). Perform high pressure antigen retrieval with 10 mM citrate buffer pH 6.0 before commencing with IHC staining protocol.

Please check the [product details page](#) for more images. Overall 7 images are available for ABIN7265520.