

Datasheet for ABIN7265529

**anti-ADH1A antibody**[Go to Product page](#)**1** Image

## Overview

Quantity:	100 µL
Target:	ADH1A
Reactivity:	Human
Host:	Rabbit
Clonality:	Monoclonal
Conjugate:	This ADH1A antibody is un-conjugated
Application:	Western Blotting (WB)

## Product Details

Purpose:	Alcohol Dehydrogenase Rabbit mAb
Immunogen:	A synthesized peptide derived from human Alcohol Dehydrogenase
Isotype:	IgG
Cross-Reactivity:	Human, Mouse, Rat
Characteristics:	Monoclonal Antibodies
Purification:	Affinity purification

## Target Details

Target:	ADH1A
Alternative Name:	ADH1A ( <a href="#">ADH1A Products</a> )
Background:	This gene encodes a member of the alcohol dehydrogenase family. The encoded protein is the

## Target Details

alpha subunit of class I alcohol dehydrogenase, which consists of several homo- and heterodimers of alpha, beta and gamma subunits. Alcohol dehydrogenases catalyze the oxidation of alcohols to aldehydes. This gene is active in the liver in early fetal life but only weakly active in adult liver. This gene is found in a cluster with six additional alcohol dehydrogenase genes, including those encoding the beta and gamma subunits, on the long arm of chromosome 4. Mutations in this gene may contribute to variation in certain personality traits and substance dependence. [provided by RefSeq, Nov 2010],ADH1,Cancer,Endocrine & Metabolism,Signal Transduction,ADH1A

Molecular Weight: 40kDa

Gene ID: 124

UniProt: [P07327](#)

## Application Details

Application Notes: WB,1:500 - 1:2000

Restrictions: For Research Use only

## Handling

Format: Liquid

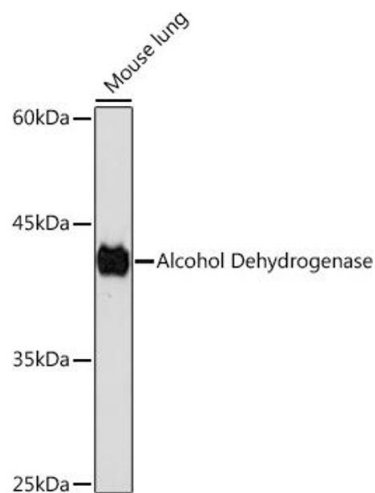
Buffer: PBS with 0.02 % sodium azide,0.05 % BSA,50 % glycerol, pH 7.3.

Preservative: Sodium azide

Precaution of Use: This product contains Sodium azide: a POISONOUS AND HAZARDOUS SUBSTANCE which should be handled by trained staff only.

Storage: -20 °C

Storage Comment: Store at -20°C. Avoid freeze / thaw cycles.



#### Western Blotting

**Image 1.** Western blot analysis of extracts of Mouse lung, using Alcohol Dehydrogenase Rabbit mAb (ABIN7265529) at 1:1000 dilution. Secondary antibody: HRP Goat Anti-Rabbit IgG (H+L) (ABIN1684268 and ABIN3020597) at 1:10000 dilution. Lysates/proteins: 25 µg per lane. Blocking buffer: 3 % nonfat dry milk in TBST. Detection: ECL Basic Kit (RM00020). Exposure time: 180s.