

Datasheet for ABIN7265530  
**anti-ADH1A antibody (AA 220-300)**[Go to Product page](#)

## 1 Image

## Overview

Quantity:	100 µL
Target:	ADH1A
Binding Specificity:	AA 220-300
Reactivity:	Human
Host:	Rabbit
Clonality:	Polyclonal
Conjugate:	This ADH1A antibody is un-conjugated
Application:	Western Blotting (WB)

## Product Details

Purpose:	Alcohol Dehydrogenase Rabbit pAb
Immunogen:	Recombinant fusion protein containing a sequence corresponding to amino acids 220-300 of human Alcohol Dehydrogenase (NP_000658.1).
Sequence:	IIAVDINKDK FAKAKELGAT ECINPQDYKK PIQEVLKEMT DGGVDFSFEV IGRLDTMMAS LLCCHEACGT SVIVGVPPDS Q
Isotype:	IgG
Cross-Reactivity:	Human, Rat
Characteristics:	Polyclonal Antibodies
Purification:	Affinity purification

## Target Details

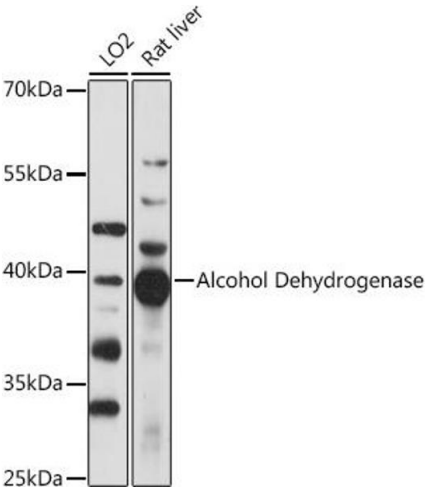
Target:	ADH1A
Alternative Name:	ADH1A ( <a href="#">ADH1A Products</a> )
Background:	<p>This gene encodes a member of the alcohol dehydrogenase family. The encoded protein is the alpha subunit of class I alcohol dehydrogenase, which consists of several homo- and heterodimers of alpha, beta and gamma subunits. Alcohol dehydrogenases catalyze the oxidation of alcohols to aldehydes. This gene is active in the liver in early fetal life but only weakly active in adult liver. This gene is found in a cluster with six additional alcohol dehydrogenase genes, including those encoding the beta and gamma subunits, on the long arm of chromosome 4. Mutations in this gene may contribute to variation in certain personality traits and substance dependence.,ADH1A,ADH1,Cancer,Signal Transduction,Endocrine &amp; Metabolism,ADH1A</p>
Molecular Weight:	39kDa
Gene ID:	124
UniProt:	<a href="#">P07327</a>

## Application Details

Application Notes:	WB,1:500 - 1:2000
Restrictions:	For Research Use only

## Handling

Format:	Liquid
Buffer:	PBS with 0.02 % sodium azide,50 % glycerol, pH 7.3.
Preservative:	Sodium azide
Precaution of Use:	This product contains Sodium azide: a POISONOUS AND HAZARDOUS SUBSTANCE which should be handled by trained staff only.
Storage:	-20 °C
Storage Comment:	Store at -20°C. Avoid freeze / thaw cycles.



Western Blotting

**Image 1.** Western blot analysis of extracts of various cell lines, using Alcohol Dehydrogenase antibody (ABIN7265530) at 1:1000 dilution. Secondary antibody: HRP Goat Anti-Rabbit IgG (H+L) (ABIN1684268 and ABIN3020597) at 1:10000 dilution. Lysates/proteins: 25 µg per lane. Blocking buffer: 3 % nonfat dry milk in TBST. Detection: ECL Basic Kit (RM00020). Exposure time: 30s.