



[Go to Product page](#)

Datasheet for ABIN7265531
anti-ALDH1A1 antibody

7 Images

Overview

Quantity:	100 µL
Target:	ALDH1A1
Reactivity:	Human
Host:	Rabbit
Clonality:	Monoclonal
Conjugate:	This ALDH1A1 antibody is un-conjugated
Application:	Western Blotting (WB), Immunofluorescence (IF), Immunoprecipitation (IP)

Product Details

Purpose:	ALDH1A1 Rabbit mAb
Immunogen:	A synthesized peptide derived from human ALDH1A1
Isotype:	IgG
Cross-Reactivity:	Human, Mouse, Rat
Characteristics:	Monoclonal Antibodies
Purification:	Affinity purification

Target Details

Target:	ALDH1A1
Alternative Name:	ALDH1A1 (ALDH1A1 Products)
Background:	The protein encoded by this gene belongs to the aldehyde dehydrogenase family. Aldehyde

Target Details

dehydrogenase is the next enzyme after alcohol dehydrogenase in the major pathway of alcohol metabolism. There are two major aldehyde dehydrogenase isozymes in the liver, cytosolic and mitochondrial, which are encoded by distinct genes, and can be distinguished by their electrophoretic mobility, kinetic properties, and subcellular localization. This gene encodes the cytosolic isozyme. Studies in mice show that through its role in retinol metabolism, this gene may also be involved in the regulation of the metabolic responses to high-fat diet.

[provided by RefSeq, Mar 2011],ALDC, ALDH-E1, ALDH1, ALDH11, HEL-9, HEL-S-53e, HEL12, PUMB1, RALDH1,Cancer,Cell Type Marker,Cell Type Marker_Neuron marker,Hematopoietic Progenitors,Neurodegenerative Diseases,Neurodegenerative Diseases_Dopamine Signaling in Parkinsons Disease,Neuroscience,Stem Cells,Tumor biomarkers,ALDH1A1

Molecular Weight: 55kDa

Gene ID: 216

UniProt: [P00352](#)

Pathways: [Dopaminergic Neurogenesis](#)

Application Details

Application Notes: WB,1:500 - 1:2000,IF,1:50 - 1:200,IP,1:50 - 1:200

Restrictions: For Research Use only

Handling

Format: Liquid

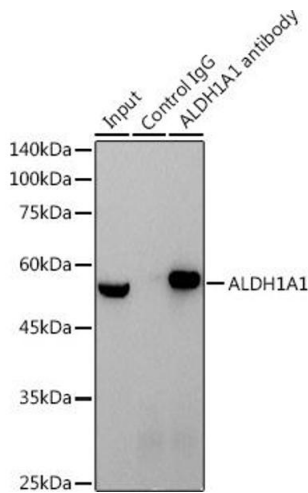
Buffer: PBS with 0.02 % sodium azide,0.05 % BSA,50 % glycerol, pH 7.3.

Preservative: Sodium azide

Precaution of Use: This product contains Sodium azide: a POISONOUS AND HAZARDOUS SUBSTANCE which should be handled by trained staff only.

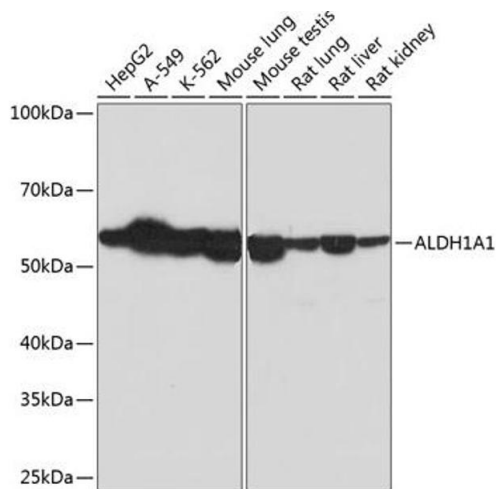
Storage: -20 °C

Storage Comment: Store at -20°C. Avoid freeze / thaw cycles.



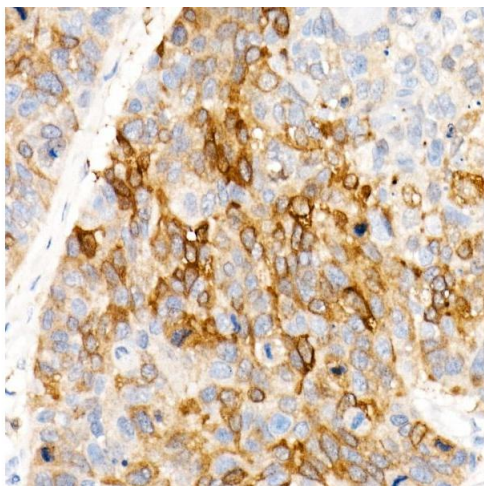
Immunoprecipitation

Image 1. Immunoprecipitation analysis of 600 µg extracts of Mouse testis cells using 3 µg antibody (ABIN7265531). Western blot was performed from the immunoprecipitate using antibody (ABIN7265531) at a dilution of 1:1000.



Western Blotting

Image 2. Western blot analysis of extracts of various cell lines, using Rabbit mAb (ABIN7265531) at 1:1000 dilution. Secondary antibody: HRP Goat Anti-Rabbit IgG (H+L) (ABIN1684268 and ABIN3020597) at 1:10000 dilution. Lysates/proteins: 25 µg per lane. Blocking buffer: 3 % nonfat dry milk in TBST. Detection: ECL Basic Kit (RM00020). Exposure time: 60s.



Immunohistochemistry

Image 3. Immunohistochemistry of paraffin-embedded Human esophageal cancer using antibody (ABIN7265531) at dilution of 400(40x lens). Perform high pressure antigen retrieval with 10 mM citrate buffer pH 6.0 before commencing with IHC staining protocol.

Please check the [product details page](#) for more images. Overall 7 images are available for ABIN7265531.