

Datasheet for ABIN7265532

**anti-ALDH1A2 antibody****3** Images[Go to Product page](#)

## Overview

Quantity:	100 µL
Target:	ALDH1A2
Reactivity:	Human
Host:	Rabbit
Clonality:	Monoclonal
Conjugate:	This ALDH1A2 antibody is un-conjugated
Application:	Western Blotting (WB), Immunohistochemistry (IHC)

## Product Details

Purpose:	ALDH1A2 Rabbit mAb
Immunogen:	A synthesized peptide derived from human ALDH1A2
Isotype:	IgG
Cross-Reactivity:	Human, Mouse, Rat
Characteristics:	Monoclonal Antibodies
Purification:	Affinity purification

## Target Details

Target:	ALDH1A2
Alternative Name:	ALDH1A2 ( <a href="#">ALDH1A2 Products</a> )
Background:	This protein belongs to the aldehyde dehydrogenase family of proteins. The product of this

## Target Details

gene is an enzyme that catalyzes the synthesis of retinoic acid (RA) from retinaldehyde. Retinoic acid, the active derivative of vitamin A (retinol), is a hormonal signaling molecule that functions in developing and adult tissues. The studies of a similar mouse gene suggest that this enzyme and the cytochrome CYP26A1, concurrently establish local embryonic retinoic acid levels which facilitate posterior organ development and prevent spina bifida. Four transcript variants encoding distinct isoforms have been identified for this gene. [provided by RefSeq, May 2011],RALDH(II), RALDH2, RALDH2-T,Cell Biology & Developmental Biology,Neuroscience,ALDH1A2

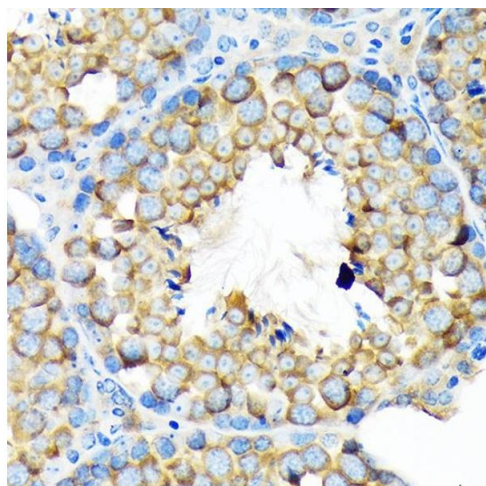
Molecular Weight:	57kDa
Gene ID:	8854
UniProt:	<a href="#">O94788</a>
Pathways:	<a href="#">Retinoic Acid Receptor Signaling Pathway</a>

## Application Details

Application Notes:	WB,1:500 - 1:2000,IHC,1:50 - 1:200
Restrictions:	For Research Use only

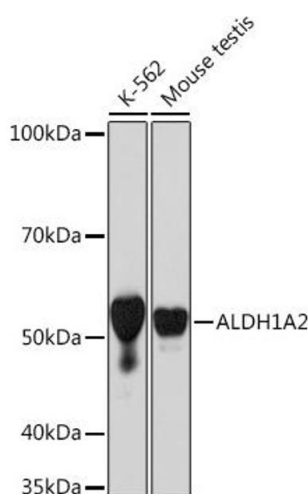
## Handling

Format:	Liquid
Buffer:	PBS with 0.02 % sodium azide,0.05 % BSA,50 % glycerol, pH 7.3.
Preservative:	Sodium azide
Precaution of Use:	This product contains Sodium azide: a POISONOUS AND HAZARDOUS SUBSTANCE which should be handled by trained staff only.
Storage:	-20 °C
Storage Comment:	Store at -20°C. Avoid freeze / thaw cycles.



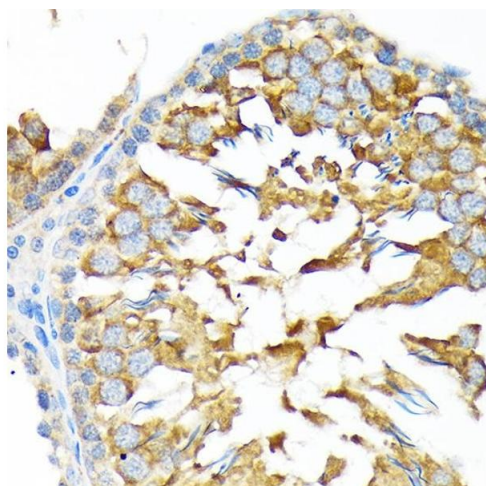
### Immunohistochemistry

**Image 1.** Immunohistochemistry of paraffin-embedded mouse testis using Rabbit mAb (ABIN7265532) at dilution of 1:100 (40x lens). Perform microwave antigen retrieval with 10 mM Tris/EDTA buffer pH 9.0 before commencing with IHC staining protocol.



### Western Blotting

**Image 2.** Western blot analysis of extracts of various cell lines, using Rabbit mAb (ABIN7265532) at 1:1000 dilution. Secondary antibody: HRP Goat Anti-Rabbit IgG (H+L) (ABIN1684268 and ABIN3020597) at 1:10000 dilution. Lysates/proteins: 25 µg per lane. Blocking buffer: 3 % nonfat dry milk in TBST. Detection: ECL Basic Kit (RM00020). Exposure time: 30s.



### Immunohistochemistry

**Image 3.** Immunohistochemistry of paraffin-embedded rat testis using Rabbit mAb (ABIN7265532) at dilution of 1:100 (40x lens). Perform microwave antigen retrieval with 10 mM Tris/EDTA buffer pH 9.0 before commencing with IHC staining protocol.