



[Go to Product page](#)

Datasheet for ABIN7265533
anti-ALDH1A3 antibody (AA 1-140)

1 Image

Overview

Quantity:	100 µL
Target:	ALDH1A3
Binding Specificity:	AA 1-140
Reactivity:	Human
Host:	Rabbit
Clonality:	Polyclonal
Conjugate:	This ALDH1A3 antibody is un-conjugated
Application:	Western Blotting (WB)

Product Details

Purpose:	ALDH1A3 Rabbit pAb
Immunogen:	Recombinant fusion protein containing a sequence corresponding to amino acids 1-140 of human ALDH1A3 (NP_000684.2).
Sequence:	MATANGAVEN GQPDRKPPAL PRPIRNLEVK FTKIFINNEW HESKSGKKFA TCNPSTREQI CEVEEGDKPD VDKAVEAAQV AFQRGSPWRR LDALSRGRL HQLADLVERD RATLAALETM DTGKPFLHAF FIDLEGCIRT
Isotype:	IgG
Cross-Reactivity:	Human, Mouse
Characteristics:	Polyclonal Antibodies
Purification:	Affinity purification

Target Details

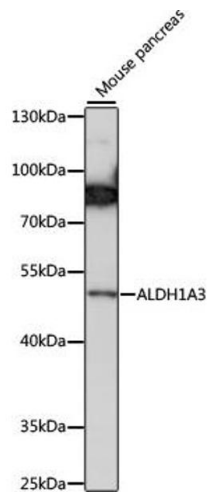
Target:	ALDH1A3
Alternative Name:	ALDH1A3 (ALDH1A3 Products)
Background:	<p>This gene encodes an aldehyde dehydrogenase enzyme that uses retinal as a substrate. Mutations in this gene have been associated with microphthalmia, isolated 8, and expression changes have also been detected in tumor cells. Alternative splicing results in multiple transcript variants.,ALDH1A3,ALDH1A6,ALDH6,MCOP8,RALDH3,Signal Transduction,Endocrine & Metabolism,Neuroscience,ALDH1A3</p>
Molecular Weight:	56kDa
Gene ID:	220
UniProt:	P47895
Pathways:	Retinoic Acid Receptor Signaling Pathway

Application Details

Application Notes:	WB,1:500 - 1:2000
Restrictions:	For Research Use only

Handling

Format:	Liquid
Buffer:	PBS with 0.02 % sodium azide,50 % glycerol, pH 7.3.
Preservative:	Sodium azide
Precaution of Use:	This product contains Sodium azide: a POISONOUS AND HAZARDOUS SUBSTANCE which should be handled by trained staff only.
Storage:	-20 °C
Storage Comment:	Store at -20°C. Avoid freeze / thaw cycles.



Western Blotting

Image 1. Western blot analysis of extracts of mouse pancreas, using antibody (ABIN7265533) at 1:1000 dilution. Secondary antibody: HRP Goat Anti-Rabbit IgG (H+L) (ABIN1684268 and ABIN3020597) at 1:10000 dilution. Lysates/proteins: 25 µg per lane. Blocking buffer: 3 % nonfat dry milk in TBST. Detection: ECL Basic Kit (RM00020). Exposure time: 60s.