



[Go to Product page](#)

Datasheet for ABIN7265542
anti-ALDH5A1 antibody (AA 400-500)

1 Image

Overview

Quantity:	100 µL
Target:	ALDH5A1
Binding Specificity:	AA 400-500
Reactivity:	Human
Host:	Rabbit
Clonality:	Polyclonal
Conjugate:	This ALDH5A1 antibody is un-conjugated
Application:	Western Blotting (WB)

Product Details

Purpose:	ALDH5A1 Rabbit pAb
Immunogen:	A synthetic peptide corresponding to a sequence within amino acids 400-500 of human ALDH5A1 (NP_001071.1).
Sequence:	VSKGATVVTG GKRHQLGKNF FEPTLLCNVT QDMLCTHEET FGPLAPVIKF DTEEEAIAIA NAADVGLAGY FYSQDPAQIW RVAEQLEVGM VGVNEGLISS V
Isotype:	IgG
Cross-Reactivity:	Mouse, Rat
Characteristics:	Polyclonal Antibodies
Purification:	Affinity purification

Target Details

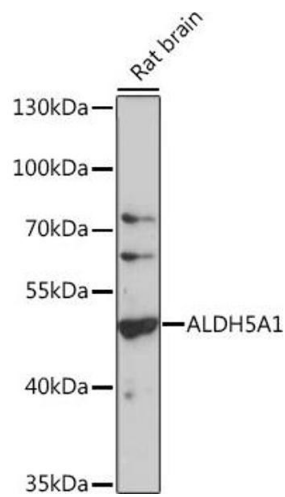
Target:	ALDH5A1
Alternative Name:	ALDH5A1 (ALDH5A1 Products)
Background:	<p>This protein belongs to the aldehyde dehydrogenase family of proteins. This gene encodes a mitochondrial NAD(+)-dependent succinic semialdehyde dehydrogenase. A deficiency of this enzyme, known as 4-hydroxybutyricaciduria, is a rare inborn error in the metabolism of the neurotransmitter 4-aminobutyric acid (GABA). In response to the defect, physiologic fluids from patients accumulate GHB, a compound with numerous neuromodulatory properties. Two transcript variants encoding distinct isoforms have been identified for this gene.,ALDH5A1,SSADH,SSDH,Signal Transduction,Endocrine & Metabolism,Mitochondrial metabolism,Mitochondrial markers,Amino acid metabolism,Lipid Metabolism,Neuroscience,ALDH5A1</p>
Molecular Weight:	57kDa/58kDa
Gene ID:	7915
UniProt:	P51649
Pathways:	Monocarboxylic Acid Catabolic Process

Application Details

Application Notes:	WB,1:500 - 1:2000
Restrictions:	For Research Use only

Handling

Format:	Liquid
Buffer:	PBS with 0.02 % sodium azide,50 % glycerol, pH 7.3.
Preservative:	Sodium azide
Precaution of Use:	This product contains Sodium azide: a POISONOUS AND HAZARDOUS SUBSTANCE which should be handled by trained staff only.
Storage:	-20 °C
Storage Comment:	Store at -20°C. Avoid freeze / thaw cycles.



Western Blotting

Image 1. Western blot analysis of extracts of rat brain, using antibody (6074) at 1:1000 dilution. Secondary antibody: HRP Goat Anti-Rabbit IgG (H+L) (ABIN1684268 and ABIN3020597) at 1:10000 dilution. Lysates/proteins: 25 µg per lane. Blocking buffer: 3% nonfat dry milk in TBST. Detection: ECL Basic Kit (RM00020). Exposure time: 90s.