



[Go to Product page](#)

Datasheet for ABIN7265563
anti-AGLU antibody (AA 860-1090)

1 Image

Overview

Quantity:	100 µL
Target:	AGLU
Binding Specificity:	AA 860-1090
Reactivity:	Human
Host:	Rabbit
Clonality:	Polyclonal
Conjugate:	This AGLU antibody is un-conjugated
Application:	Western Blotting (WB)

Product Details

Purpose:	MGAM Rabbit pAb
Immunogen:	Recombinant fusion protein containing a sequence corresponding to amino acids 860-1090 of human MGAM (NP_004659.2).
Sequence:	ETKDTVANKV YLLCEFSVTQ NRLEVNISQS TYKDPNNLAF NEIKILGTEE PSNVTVKHNG VPSQTSPVT YDSNLKVAII TDIDLLLGEA YTVEWSIKIR DEEKIDCYPD ENGASAENCT ARGCIWEASN SSGVPFCYFV NDLYSVSDVQ YNSHGATADI SLKSSVYANA FPSTPVNPLR LDVTYHKNEMLQFKIYDPNK NRYEVPVPLN IPSMPSTPE GQLYDVLIKK N
Isotype:	IgG
Cross-Reactivity:	Human
Characteristics:	Polyclonal Antibodies

Product Details

Purification: Affinity purification

Target Details

Target: AGLU

Alternative Name: MGAM ([AGLU Products](#))

Background: This gene encodes maltase-glucoamylase, which is a brush border membrane enzyme that plays a role in the final steps of digestion of starch. The protein has two catalytic sites identical to those of sucrase-isomaltase, but the proteins are only 59 % homologous. Both are members of glycosyl hydrolase family 31, which has a variety of substrate specificities. [provided by RefSeq, Jul 2008],MG,MGA,MGAM,MGAM

Gene ID: 8972

UniProt: [O43451](#)

Pathways: [Cellular Glucan Metabolic Process](#)

Application Details

Application Notes: WB,1:500 - 1:2000

Restrictions: For Research Use only

Handling

Format: Liquid

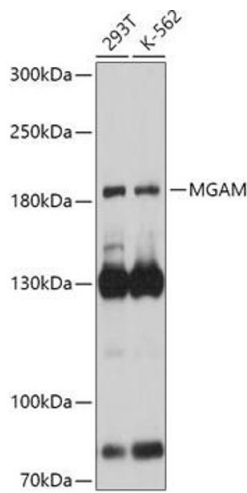
Buffer: PBS with 0.02 % sodium azide,50 % glycerol, pH 7.3.

Preservative: Sodium azide

Precaution of Use: This product contains Sodium azide: a POISONOUS AND HAZARDOUS SUBSTANCE which should be handled by trained staff only.

Storage: -20 °C

Storage Comment: Store at -20°C. Avoid freeze / thaw cycles.



Western Blotting

Image 1. Western blot analysis of extracts of various cell lines, using MGAM antibody (ABIN7265563) at 1:1000 dilution. Secondary antibody: HRP Goat Anti-Rabbit IgG (H+L) (ABIN1684268 and ABIN3020597) at 1:10000 dilution. Lysates/proteins: 25 µg per lane. Blocking buffer: 3 % nonfat dry milk in TBST. Detection: ECL Basic Kit (RM00020). Exposure time: 5s.