

Datasheet for ABIN7265566

anti-ASPSCR1 antibody[Go to Product page](#)**1** Image

Overview

Quantity:	100 µL
Target:	ASPSCR1
Reactivity:	Human
Host:	Rabbit
Clonality:	Monoclonal
Conjugate:	This ASPSCR1 antibody is un-conjugated
Application:	Western Blotting (WB)

Product Details

Purpose:	TUG/ASPSCR1 Rabbit mAb
Immunogen:	A synthesized peptide derived from human TUG/ASPSCR1.
Isotype:	IgG
Cross-Reactivity:	Human, Mouse
Characteristics:	Monoclonal Antibodies
Purification:	Affinity purification

Target Details

Target:	ASPSCR1
Alternative Name:	TUG (ASPSCR1 Products)
Background:	The protein encoded by this gene contains a UBX domain and interacts with glucose

Target Details

transporter type 4 (GLUT4). This protein is a tether, which sequesters the GLUT4 in intracellular vesicles in muscle and fat cells in the absence of insulin, and redistributes the GLUT4 to the plasma membrane within minutes of insulin stimulation. Translocation t(X,17)(p11,q25) of this gene with transcription factor TFE3 gene results in a ASPSCR1-TFE3 fusion protein in alveolar soft part sarcoma and in renal cell carcinomas. Multiple alternatively spliced transcript variants have been found.,ASPSR1, ASPCR1, ASPL, ASPS, RCC17, TUG, UBXD9, UBXN9, tether containing UBX domain for GLUT4,Cancer,Signal Transduction,Cell Biology & Developmental Biology,Growth factor,Endocrine & Metabolism,Lipid Metabolism,TUG

Molecular Weight: 70-80kDa

Gene ID: 79058

UniProt: [Q9BZE9](#)

Application Details

Application Notes: WB,1:500 - 1:2000

Restrictions: For Research Use only

Handling

Format: Liquid

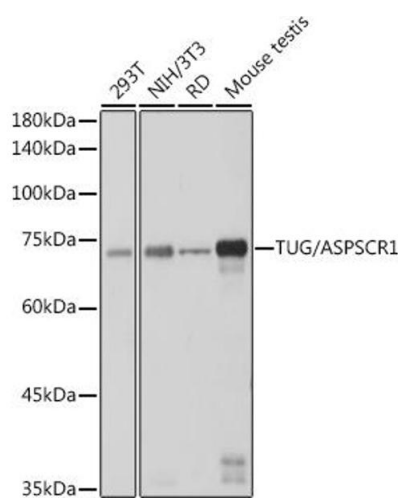
Buffer: PBS with 0.02 % sodium azide,0.05 % BSA,50 % glycerol, pH 7.3.

Preservative: Sodium azide

Precaution of Use: This product contains Sodium azide: a POISONOUS AND HAZARDOUS SUBSTANCE which should be handled by trained staff only.

Storage: -20 °C

Storage Comment: Store at -20°C. Avoid freeze / thaw cycles.



Western Blotting

Image 1. Western blot analysis of extracts of various cell lines, using TUG/ antibody (ABIN7265566) at 1:1000 dilution. Secondary antibody: HRP Goat Anti-Rabbit IgG (H+L) (ABIN1684268 and ABIN3020597) at 1:10000 dilution. Lysates/proteins: 25 µg per lane. Blocking buffer: 3 % nonfat dry milk in TBST. Detection: ECL Basic Kit (RM00020). Exposure time: 1s.