

Datasheet for ABIN7265571

**anti-ALAS1 antibody**[Go to Product page](#)**1** Image

## Overview

Quantity:	100 µL
Target:	ALAS1
Reactivity:	Human
Host:	Rabbit
Clonality:	Monoclonal
Conjugate:	This ALAS1 antibody is un-conjugated
Application:	Western Blotting (WB)

## Product Details

Purpose:	ALAS1 Rabbit mAb
Immunogen:	A synthesized peptide derived from human ALAS1
Isotype:	IgG
Cross-Reactivity:	Human
Characteristics:	Monoclonal Antibodies
Purification:	Affinity purification

## Target Details

Target:	ALAS1
Alternative Name:	ALAS1 ( <a href="#">ALAS1 Products</a> )
Background:	This gene encodes the mitochondrial enzyme which is catalyzes the rate-limiting step in heme

## Target Details

(iron-protoporphyrin) biosynthesis. The enzyme encoded by this gene is the housekeeping enzyme, a separate gene encodes a form of the enzyme that is specific for erythroid tissue. The level of the mature encoded protein is regulated by heme: high levels of heme down-regulate the mature enzyme in mitochondria while low heme levels up-regulate. A pseudogene of this gene is located on chromosome 12. Alternative splicing results in multiple transcript variants encoding different isoforms. [provided by RefSeq, Jan 2015],ALAS, ALAS-H, ALAS3, ALASH, MIG4,Blood,Cancer,Cardiovascular,Endocrine & Metabolism,Mitochondrial metabolism,Mitochondrial metabolism\_Mitochondrial markers,Signal Transduction,ALAS1

Molecular Weight: 71kDa

Gene ID: 211

UniProt: [P13196](#)

Pathways: [Regulation of Lipid Metabolism by PPARalpha](#)

## Application Details

Application Notes: WB,1:500 - 1:2000

Restrictions: For Research Use only

## Handling

Format: Liquid

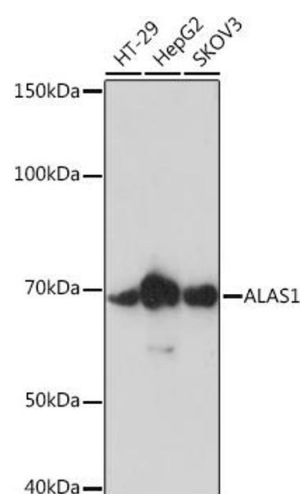
Buffer: PBS with 0.02 % sodium azide,0.05 % BSA,50 % glycerol, pH 7.3.

Preservative: Sodium azide

Precaution of Use: This product contains Sodium azide: a POISONOUS AND HAZARDOUS SUBSTANCE which should be handled by trained staff only.

Storage: -20 °C

Storage Comment: Store at -20°C. Avoid freeze / thaw cycles.



### Western Blotting

**Image 1.** Western blot analysis of extracts of various cell lines, using Rabbit mAb (ABIN7265571) at 1:1000 dilution. Secondary antibody: HRP Goat Anti-Rabbit IgG (H+L) (ABIN1684268 and ABIN3020597) at 1:10000 dilution. Lysates/proteins: 25 µg per lane. Blocking buffer: 3 % nonfat dry milk in TBST. Detection: ECL Enhanced Kit (RM00021). Exposure time: 90s.