

Datasheet for ABIN7265575

anti-APP antibody

7 Images

[Go to Product page](#)

Overview

Quantity:	100 µL
Target:	APP
Reactivity:	Human
Host:	Rabbit
Clonality:	Monoclonal
Conjugate:	This APP antibody is un-conjugated
Application:	Western Blotting (WB), Immunohistochemistry (IHC), Immunofluorescence (IF), Immunoprecipitation (IP)

Product Details

Purpose:	[KO Validated] APP Rabbit mAb
Immunogen:	A synthesized peptide derived from human APP
Isotype:	IgG
Cross-Reactivity:	Human, Mouse, Rat
Characteristics:	Monoclonal Antibodies
Purification:	Affinity purification
Grade:	KO Validated

Target Details

Target:	APP
---------	-----

Target Details

Alternative Name:	APP (APP Products)
Background:	<p>This gene encodes a cell surface receptor and transmembrane precursor protein that is cleaved by secretases to form a number of peptides. Some of these peptides are secreted and can bind to the acetyltransferase complex APBB1/TIP60 to promote transcriptional activation, while others form the protein basis of the amyloid plaques found in the brains of patients with Alzheimer disease. In addition, two of the peptides are antimicrobial peptides, having been shown to have bacteriocidal and antifungal activities. Mutations in this gene have been implicated in autosomal dominant Alzheimer disease and cerebroarterial amyloidosis (cerebral amyloid angiopathy). Multiple transcript variants encoding several different isoforms have been found for this gene. [provided by RefSeq, Aug 2014],AAA,ABETA,ABPP,AD1,APPI,CTFgamma,CVAP,PN-II,PN2,Amyloid beta A4,APP,Aβ42,preA4,Apoptosis,Cell Biology & Developmental Biology,Epigenetics & Nuclear Signaling,G protein signaling,IL-6 Receptor Signaling Pathway,Immunology & Inflammation,Neurodegenerative Diseases,Neurodegenerative Diseases Markers,Neurodegenerative Diseases_Amyloid Plaque and Neurofibrillary Tangle Formation in Alzheimers Disease,Neuroscience,Protein phosphorylation,Signal Transduction,Transcription Factors,APP</p>
Molecular Weight:	86kDa
Gene ID:	351
UniProt:	P05067
Pathways:	Caspase Cascade in Apoptosis , EGFR Signaling Pathway , Transition Metal Ion Homeostasis , Skeletal Muscle Fiber Development , Toll-Like Receptors Cascades , Feeding Behaviour

Application Details

Application Notes:	WB,1:500 - 1:2000,IHC,1:50 - 1:200,IF,1:50 - 1:200,IP,1:50 - 1:200
Restrictions:	For Research Use only

Handling

Format:	Liquid
Buffer:	PBS with 0.02 % sodium azide,0.05 % BSA,50 % glycerol, pH 7.3.
Preservative:	Sodium azide
Precaution of Use:	This product contains Sodium azide: a POISONOUS AND HAZARDOUS SUBSTANCE which

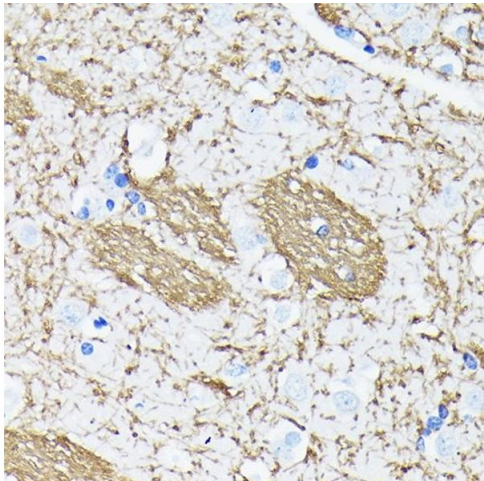
Handling

should be handled by trained staff only.

Storage: -20 °C

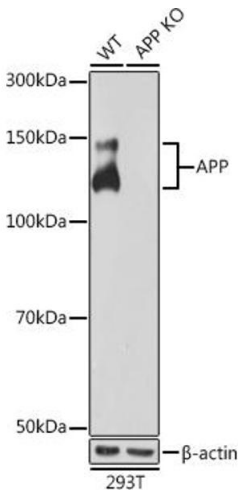
Storage Comment: Store at -20°C. Avoid freeze / thaw cycles.

Images



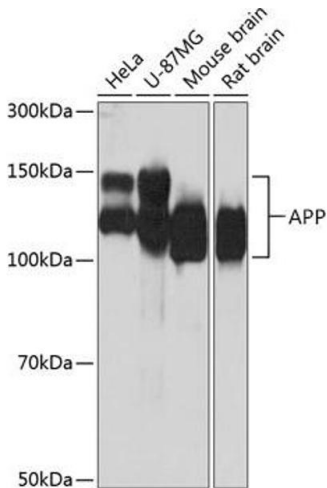
Immunohistochemistry

Image 1. Immunohistochemistry of paraffin-embedded human brain using APP Rabbit mAb (ABIN7265575) at dilution of 1:100 (40x lens). Perform microwave antigen retrieval with 10 mM PBS buffer pH 7.2 before commencing with IHC staining protocol.



Western Blotting

Image 2. Western blot analysis of extracts from wild type (WT) and APP knockout (KO) 293T cells, using APP antibody (ABIN7265575) at 1:1000 dilution. Secondary antibody: HRP Goat Anti-Rabbit IgG (H+L) (ABIN1684268 and ABIN3020597) at 1:10000 dilution. Lysates/proteins: 25 µg per lane. Blocking buffer: 3 % nonfat dry milk in TBST. Detection: ECL Basic Kit (RM00020). Exposure time: 10s.



Western Blotting

Image 3. Western blot analysis of extracts of various cell lines, using APP antibody (ABIN7265575) at 1:1000 dilution. Secondary antibody: HRP Goat Anti-Rabbit IgG (H+L) (ABIN1684268 and ABIN3020597) at 1:10000 dilution. Lysates/proteins: 25 µg per lane. Blocking buffer: 3 % nonfat dry milk in TBST. Detection: ECL Basic Kit (RM00020). Exposure time: 10s.

Images

Please check the [product details page](#) for more images. Overall 7 images are available for ABIN7265575.