



[Go to Product page](#)

Datasheet for ABIN7265579
anti-APPBP2 antibody (AA 386-585)

1 Image

Overview

Quantity:	100 µL
Target:	APPBP2
Binding Specificity:	AA 386-585
Reactivity:	Human
Host:	Rabbit
Clonality:	Polyclonal
Conjugate:	This APPBP2 antibody is un-conjugated
Application:	Western Blotting (WB)

Product Details

Purpose:	APPBP2 Rabbit pAb
Immunogen:	Recombinant fusion protein containing a sequence corresponding to amino acids 386-585 of human APPBP2 (NP_006371.2).
Sequence:	LEEIAIDCHN KETEQRLLQE AHDLHLSSLQ LAKKAFGEFN VQTAKHYGNL GRLYQSMRKF KEAEEMHIKA IQIKEQLLGQ EDYEVALSVG HLASLYNYDM NQYENAEKLY LRSIAIGKKL FGEGYSGLEY DYRGLIKLYN SIGNYEKVF EYHNVLSNWNLRDRQYSVTD ALEDVSTSPQ STEEVQSFL ISQNVEGPSC
Isotype:	IgG
Cross-Reactivity:	Human, Mouse, Rat
Characteristics:	Polyclonal Antibodies

Product Details

Purification: Affinity purification

Target Details

Target: APPBP2

Alternative Name: APPBP2 ([APPBP2 Products](#))

Background: The protein encoded by this gene interacts with microtubules and is functionally associated with beta-amyloid precursor protein transport and/or processing. The beta-amyloid precursor protein is a cell surface protein with signal-transducing properties, and it is thought to play a role in the pathogenesis of Alzheimer's disease. The encoded protein may be involved in regulating cell death. This gene has been found to be highly expressed in breast cancer. Alternative splicing results in multiple transcript variants.,APPBP2,APP-BP2,HS.84084,PAT1,Neuroscience,Neurodegenerative Diseases,Amyloid Plaque and Neurofibrillary Tangle Formation in Alzheimer's Disease,APPBP2

Molecular Weight: 66kDa

Gene ID: 10513

UniProt: [Q92624](#)

Application Details

Application Notes: WB,1:500 - 1:2000

Restrictions: For Research Use only

Handling

Format: Liquid

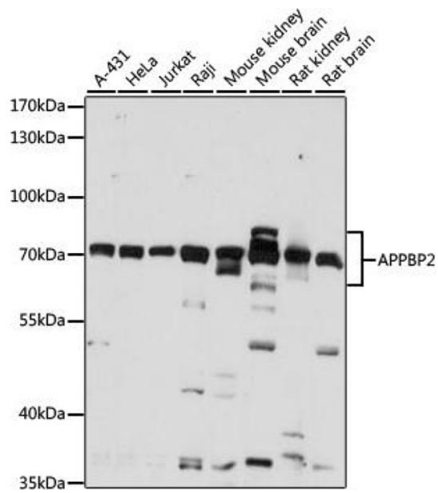
Buffer: PBS with 0.02 % sodium azide,50 % glycerol, pH 7.3.

Preservative: Sodium azide

Precaution of Use: This product contains Sodium azide: a POISONOUS AND HAZARDOUS SUBSTANCE which should be handled by trained staff only.

Storage: -20 °C

Storage Comment: Store at -20°C. Avoid freeze / thaw cycles.



Western Blotting

Image 1. Western blot analysis of extracts of various cell lines, using antibody (ABIN7265579) at 1:1000 dilution. Secondary antibody: HRP Goat Anti-Rabbit IgG (H+L) (ABIN1684268 and ABIN3020597) at 1:10000 dilution. Lysates/proteins: 25 µg per lane. Blocking buffer: 3 % nonfat dry milk in TBST. Detection: ECL Basic Kit (RM00020). Exposure time: 35s.