

Datasheet for ABIN7265581
anti-ANAPC2 antibody (AA 400-500)[Go to Product page](#)

3 Images

Overview

Quantity:	100 µL
Target:	ANAPC2
Binding Specificity:	AA 400-500
Reactivity:	Human
Host:	Rabbit
Clonality:	Polyclonal
Conjugate:	This ANAPC2 antibody is un-conjugated
Application:	Western Blotting (WB)

Product Details

Purpose:	ANAPC2 Rabbit pAb
Immunogen:	A synthetic peptide corresponding to a sequence within amino acids 400-500 of human ANAPC2 (NP_037498.1).
Sequence:	YISAIKALRV LDPSMVILEV ACEPIRRYLR TREDTVRQIV AGLTGDS DGT GDLEVELSKT DPASLETGQD SEDDSGEPED WVPDPVDADP GKSSSKRRSS D
Isotype:	IgG
Cross-Reactivity:	Mouse, Rat
Characteristics:	Polyclonal Antibodies
Purification:	Affinity purification

Target Details

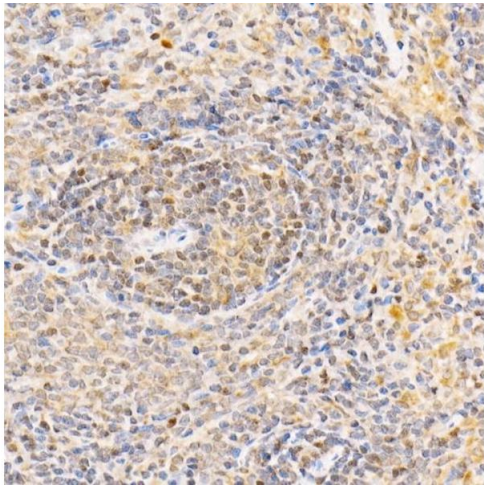
Target:	ANAPC2
Alternative Name:	ANAPC2 (ANAPC2 Products)
Background:	<p>A large protein complex, termed the anaphase-promoting complex (APC), or the cyclosome, promotes metaphase-anaphase transition by ubiquitinating its specific substrates such as mitotic cyclins and anaphase inhibitor, which are subsequently degraded by the 26S proteasome. Biochemical studies have shown that the vertebrate APC contains eight subunits. The composition of the APC is highly conserved in organisms from yeast to humans. The product of this gene is a component of the complex and shares sequence similarity with a recently identified family of proteins called cullins, which may also be involved in ubiquitin-mediated degradation. ANAPC2, APC2, Cell Biology & Developmental Biology, Cell Cycle, Ubiquitin, Ubiquitin-Proteasome Signaling Pathway, ANAPC2</p>
Molecular Weight:	93kDa
Gene ID:	29882
UniProt:	Q9UJX6
Pathways:	Regulation of Cell Size

Application Details

Application Notes:	WB, 1:500 - 1:2000
Restrictions:	For Research Use only

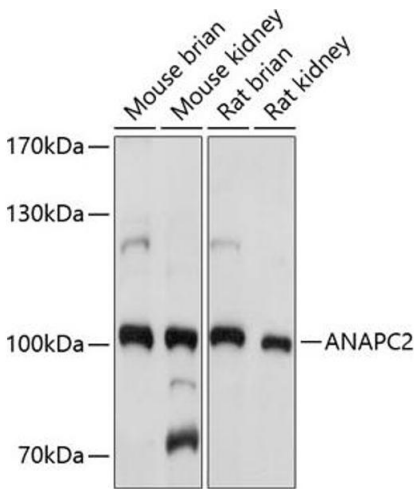
Handling

Format:	Liquid
Buffer:	PBS with 0.02 % sodium azide, 50 % glycerol, pH 7.3.
Preservative:	Sodium azide
Precaution of Use:	This product contains Sodium azide: a POISONOUS AND HAZARDOUS SUBSTANCE which should be handled by trained staff only.
Storage:	-20 °C
Storage Comment:	Store at -20°C. Avoid freeze / thaw cycles.



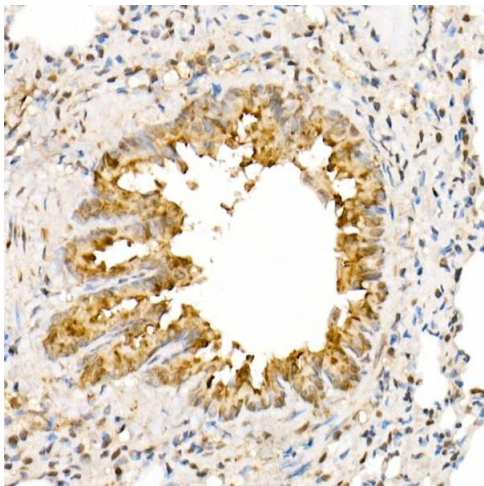
Immunohistochemistry

Image 1. Immunohistochemistry of paraffin-embedded rat spleen using Rabbit pAb (ABIN7265581) at dilution of 1:350 (40x lens). Perform high pressure antigen retrieval with 10 mM citrate buffer pH 6.0 before commencing with IHC staining protocol.



Western Blotting

Image 2. Western blot analysis of extracts of various cell lines, using antibody (ABIN7265581) at 1:1000 dilution. Secondary antibody: HRP Goat Anti-Rabbit IgG (H+L) (ABIN1684268 and ABIN3020597) at 1:10000 dilution. Lysates/proteins: 25 µg per lane. Blocking buffer: 3 % nonfat dry milk in TBST. Detection: ECL Basic Kit (RM00020). Exposure time: 5s.



Immunohistochemistry

Image 3. Immunohistochemistry of paraffin-embedded rat lung using Rabbit pAb (ABIN7265581) at dilution of 1:350 (40x lens). Perform high pressure antigen retrieval with 10 mM citrate buffer pH 6.0 before commencing with IHC staining protocol.