



[Go to Product page](#)

Datasheet for ABIN7265592
anti-ANGPTL5 antibody (AA 1-388)

1 Image

Overview

Quantity:	100 µL
Target:	ANGPTL5
Binding Specificity:	AA 1-388
Reactivity:	Human
Host:	Rabbit
Clonality:	Polyclonal
Conjugate:	This ANGPTL5 antibody is un-conjugated
Application:	Western Blotting (WB)

Product Details

Purpose:	ANGPTL5 Rabbit pAb
Immunogen:	Recombinant fusion protein containing a sequence corresponding to amino acids 1-388 of human ANGPTL5 (NP_835228.2).
Sequence:	MMSPSQASLL FLNVCIFICG EAVQGNVCVHH STDSSVVNIV EDGSNAKDES KSNDTVCKED CEESCDVGTK ITREEKHFMCRNLQNSIVSY TRSTKLLRN MMDEQQASLD YLSNQVNELM NRVLLLTTEV FRKQLDPFPH RPVQSHGLDC TDIKDTIGSV TKTPSGLYII HPEGSSYPFE VMCDMDYRGG GRTVIQKRID GIIDFQRLWC DYLDGFGDLL GEFWLGLKKI FYIVNQKNTS FMLYVALESE DDTLAYASYD NFWLEDETRF FKMHLGRYSG NAGDAFRGLK KEDNQNAMPF STSDVDNDGC RPACLVNGQS VKSCSHLHNK TGWWFNECGL ANLNGIHHFS GKLLATGIQW GTWTKNNSPV KIKSVSMKIR RMYNPYFK
Isotype:	IgG

Product Details

Cross-Reactivity:	Human
Characteristics:	Polyclonal Antibodies
Purification:	Affinity purification

Target Details

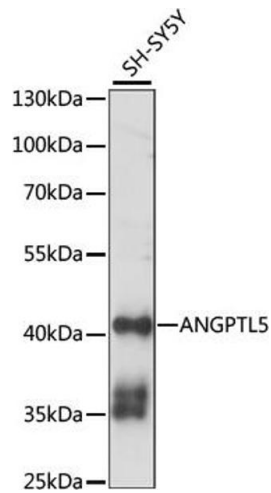
Target:	ANGPTL5
Alternative Name:	ANGPTL5 (ANGPTL5 Products)
Background:	ANGPTL5,Cell Biology & Developmental Biology,Growth factor,Cardiovascular,Angiogenesis,ANGPTL5
Molecular Weight:	44kDa
Gene ID:	253935
UniProt:	Q86XS5

Application Details

Application Notes:	WB,1:500 - 1:2000
Restrictions:	For Research Use only

Handling

Format:	Liquid
Buffer:	PBS with 0.02 % sodium azide,50 % glycerol, pH 7.3.
Preservative:	Sodium azide
Precaution of Use:	This product contains Sodium azide: a POISONOUS AND HAZARDOUS SUBSTANCE which should be handled by trained staff only.
Storage:	-20 °C
Storage Comment:	Store at -20°C. Avoid freeze / thaw cycles.



Western Blotting

Image 1. Western blot analysis of extracts of SH-SY5Y cells, using antibody (ABIN7265592) at 1:1000 dilution. Secondary antibody: HRP Goat Anti-Rabbit IgG (H+L) (ABIN1684268 and ABIN3020597) at 1:10000 dilution. Lysates/proteins: 25 µg per lane. Blocking buffer: 3 % nonfat dry milk in TBST. Detection: ECL Basic Kit (RM00020). Exposure time: 60S.