



Datasheet for ABIN7265601
anti-ABTB1 antibody



[Go to Product page](#)

1 Image

Overview

Quantity:	100 µL
Target:	ABTB1
Reactivity:	Human
Host:	Rabbit
Clonality:	Polyclonal
Conjugate:	This ABTB1 antibody is un-conjugated
Application:	Western Blotting (WB)

Product Details

Purpose:	ABTB1 Rabbit pAb
Immunogen:	Recombinant protein of human ABTB1.
Isotype:	IgG
Cross-Reactivity:	Mouse, Rat
Characteristics:	Polyclonal Antibodies
Purification:	Affinity purification

Target Details

Target:	ABTB1
Alternative Name:	ABTB1 (ABTB1 Products)
Background:	This gene encodes a protein with an ankyrin repeat region and two BTB/POZ domains, which

Target Details

are thought to be involved in protein-protein interactions. Expression of this gene is activated by the phosphatase and tensin homolog, a tumor suppressor. Alternate splicing results in three transcript variants.,BPOZ,BTB3,BTBD21,EF1ABP,PP2259,ABTB1,Cancer,Epigenetics & Nuclear Signaling,Tumor suppressors,ABTB1

Molecular Weight: 37kDa/44kDa/51kDa/53kDa

Gene ID: 80325

UniProt: [Q969K4](#)

Application Details

Application Notes: WB,1:500 - 1:2000

Restrictions: For Research Use only

Handling

Format: Liquid

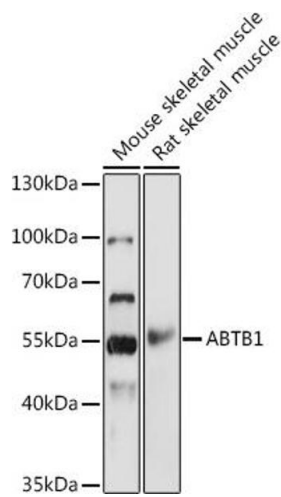
Buffer: PBS with 0.02 % sodium azide,50 % glycerol, pH 7.3.

Preservative: Sodium azide

Precaution of Use: This product contains Sodium azide: a POISONOUS AND HAZARDOUS SUBSTANCE which should be handled by trained staff only.

Storage: -20 °C

Storage Comment: Store at -20°C. Avoid freeze / thaw cycles.



Western Blotting

Image 1. Western blot analysis of extracts of various cell lines, using antibody at 1:1000 dilution. Secondary antibody: HRP Goat Anti-Rabbit IgG (H+L) (ABIN1684268 and ABIN3020597) at 1:10000 dilution. Lysates/proteins: 25 µg per lane. Blocking buffer: 3% nonfat dry milk in TBST. Detection: ECL Basic Kit (RM00020). Exposure time: 90s.