



[Go to Product page](#)

Datasheet for ABIN7265606
anti-ASB13 antibody (AA 179-278)

1 Image

Overview

Quantity:	100 µL
Target:	ASB13
Binding Specificity:	AA 179-278
Reactivity:	Human
Host:	Rabbit
Clonality:	Polyclonal
Conjugate:	This ASB13 antibody is un-conjugated
Application:	Western Blotting (WB)

Product Details

Purpose:	ASB13 Rabbit pAb
Immunogen:	Recombinant fusion protein containing a sequence corresponding to amino acids 179-278 of human ASB13 (NP_078977.2).
Sequence:	AKLHETALHH AAKVKNVDLI EMLIEFGGNI YARDNRGKKP SDYTWSSSAP AKCFEYYEKT PLTLSQLCRV NLRKATGVRG LEKIAKLNIP PRLIDYLSYN
Isotype:	IgG
Cross-Reactivity:	Mouse
Characteristics:	Polyclonal Antibodies
Purification:	Affinity purification

Target Details

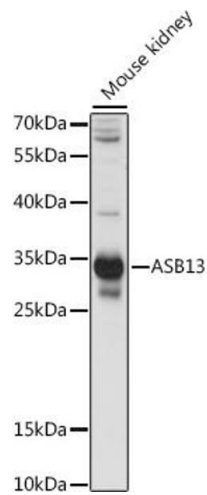
Target:	ASB13
Alternative Name:	ASB13 (ASB13 Products)
Background:	The protein encoded by this gene is a member of the ankyrin repeat and SOCS box-containing (ASB) family of proteins. They contain ankyrin repeat sequence and a SOCS box domain. The SOCS box serves to couple suppressor of cytokine signalling (SOCS) proteins and their binding partners with the elongin B and C complex, possibly targeting them for degradation. Multiple alternatively spliced transcript variants, both protein-coding and not protein-coding, have been described for this gene.,ASB13,ASB13
Molecular Weight:	18kDa/30kDa
Gene ID:	79754
UniProt:	Q8WXX3

Application Details

Application Notes:	WB,1:500 - 1:2000
Restrictions:	For Research Use only

Handling

Format:	Liquid
Buffer:	PBS with 0.02 % sodium azide,50 % glycerol, pH 7.3.
Preservative:	Sodium azide
Precaution of Use:	This product contains Sodium azide: a POISONOUS AND HAZARDOUS SUBSTANCE which should be handled by trained staff only.
Storage:	-20 °C
Storage Comment:	Store at -20°C. Avoid freeze / thaw cycles.



Western Blotting

Image 1. Western blot analysis of extracts of mouse kidney, using antibody (ABIN7265606) at 1:1000 dilution. Secondary antibody: HRP Goat Anti-Rabbit IgG (H+L) (ABIN1684268 and ABIN3020597) at 1:10000 dilution. Lysates/proteins: 25 µg per lane. Blocking buffer: 3 % nonfat dry milk in TBST. Detection: ECL Basic Kit (RM00020). Exposure time: 10s.