



[Go to Product page](#)

Datasheet for ABIN7265630
anti-AMHR2 antibody

1 Image

Overview

Quantity:	100 µL
Target:	AMHR2
Reactivity:	Human
Host:	Rabbit
Clonality:	Monoclonal
Conjugate:	This AMHR2 antibody is un-conjugated
Application:	Western Blotting (WB)

Product Details

Purpose:	AMHR2 Rabbit mAb
Immunogen:	A synthesized peptide derived from human AMHR2
Isotype:	IgG
Cross-Reactivity:	Human
Characteristics:	Monoclonal Antibodies
Purification:	Affinity purification

Target Details

Target:	AMHR2
Alternative Name:	AMHR2 (AMHR2 Products)
Background:	This gene encodes the receptor for the anti-Mullerian hormone (AMH) which, in addition to

Target Details

testosterone, results in male sex differentiation. AMH and testosterone are produced in the testes by different cells and have different effects. Testosterone promotes the development of male genitalia while the binding of AMH to the encoded receptor prevents the development of the mullerian ducts into uterus and Fallopian tubes. Mutations in this gene are associated with persistent Mullerian duct syndrome type II. Alternatively spliced transcript variants encoding different isoforms have been identified. [provided by RefSeq, Sep 2009],AMHR, MISR2, MISRII, MRRII,Cell Biology & Developmental Biology,Growth factors,Kinase,Signal Transduction,Stem Cells,AMHR2

Molecular Weight: 55kDa

Gene ID: 269

UniProt: [Q16671](#)

Application Details

Application Notes: WB,1:500 - 1:2000

Restrictions: For Research Use only

Handling

Format: Liquid

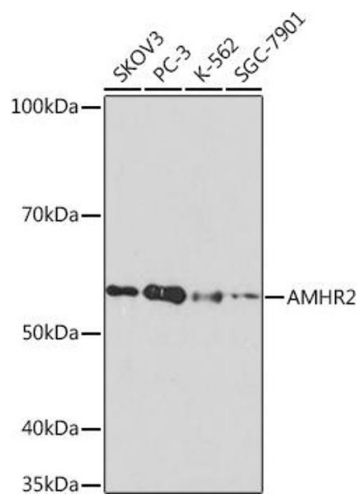
Buffer: PBS with 0.02 % sodium azide,0.05 % BSA,50 % glycerol, pH 7.3.

Preservative: Sodium azide

Precaution of Use: This product contains Sodium azide: a POISONOUS AND HAZARDOUS SUBSTANCE which should be handled by trained staff only.

Storage: -20 °C

Storage Comment: Store at -20°C. Avoid freeze / thaw cycles.



Western Blotting

Image 1. Western blot analysis of extracts of various cell lines, using Rabbit mAb (ABIN7265630) at 1:1000 dilution. Secondary antibody: HRP Goat Anti-Rabbit IgG (H+L) (ABIN1684268 and ABIN3020597) at 1:10000 dilution. Lysates/proteins: 25 µg per lane. Blocking buffer: 3 % nonfat dry milk in TBST. Detection: ECL Basic Kit (RM00020). Exposure time: 3 min.