

Datasheet for ABIN7265645

**anti-APOL1 antibody****2** Images[Go to Product page](#)

## Overview

Quantity:	100 µL
Target:	APOL1
Reactivity:	Human
Host:	Rabbit
Clonality:	Monoclonal
Conjugate:	This APOL1 antibody is un-conjugated
Application:	Western Blotting (WB), Immunofluorescence (IF)

## Product Details

Purpose:	APOL1 Rabbit mAb
Immunogen:	A synthesized peptide derived from human APOL1
Isotype:	IgG
Cross-Reactivity:	Human, Mouse
Characteristics:	Monoclonal Antibodies
Purification:	Affinity purification

## Target Details

Target:	APOL1
Alternative Name:	APOL1 ( <a href="#">APOL1 Products</a> )
Background:	This gene encodes a secreted high density lipoprotein which binds to apolipoprotein A-I.

## Target Details

Apolipoprotein A-I is a relatively abundant plasma protein and is the major apoprotein of HDL. It is involved in the formation of most cholesteryl esters in plasma and also promotes efflux of cholesterol from cells. This apolipoprotein L family member may play a role in lipid exchange and transport throughout the body, as well as in reverse cholesterol transport from peripheral cells to the liver. Several different transcript variants encoding different isoforms have been found for this gene. [provided by RefSeq, Nov 2008],APO-L, APOL, APOL-I, FSGS4,Cancer,Cardiovascular,Cardiovascular diseases,Cardiovascular diseases\_Heart disease,Endocrine & Metabolism,Heart,Lipid Metabolism,Lipids,Lipids\_Lipoproteins/Apolipoproteins,APOL1

Molecular Weight: 44kDa

Gene ID: 8542

UniProt: [O14791](#)

## Application Details

Application Notes: WB,1:500 - 1:2000,IF,1:50 - 1:200

Restrictions: For Research Use only

## Handling

Format: Liquid

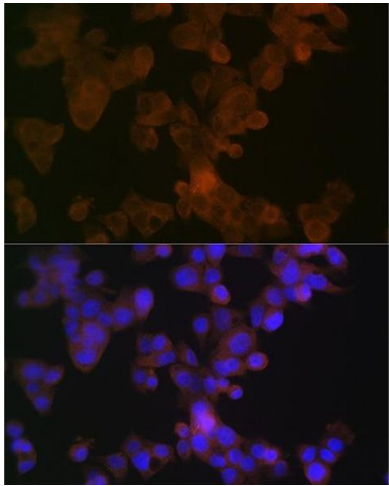
Buffer: PBS with 0.02 % sodium azide,0.05 % BSA,50 % glycerol, pH 7.3.

Preservative: Sodium azide

Precaution of Use: This product contains Sodium azide: a POISONOUS AND HAZARDOUS SUBSTANCE which should be handled by trained staff only.

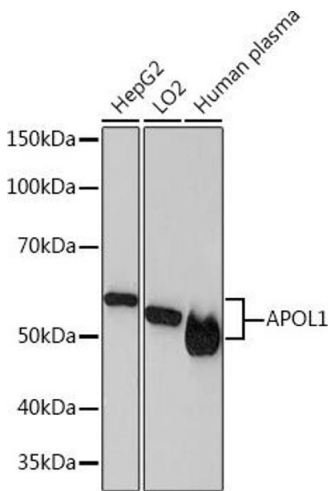
Storage: -20 °C

Storage Comment: Store at -20°C. Avoid freeze / thaw cycles.



Immunofluorescence

**Image 1.** Immunofluorescence analysis of HepG2 cells using Rabbit mAb (ABIN7265645) at dilution of 1:100 (40x lens). Blue: DAPI for nuclear staining.



Western Blotting

**Image 2.** Western blot analysis of extracts of various cell lines, using Rabbit mAb (ABIN7265645) at 1:1000 dilution. Secondary antibody: HRP Goat Anti-Rabbit IgG (H+L) (ABIN1684268 and ABIN3020597) at 1:10000 dilution. Lysates/proteins: 25 µg per lane. Blocking buffer: 3 % nonfat dry milk in TBST. Detection: ECL Basic Kit (RM00020). Exposure time: 3 min.