

Datasheet for ABIN7265646
anti-Apolipoprotein M antibody

3 Images

[Go to Product page](#)

Overview

Quantity:	100 µL
Target:	Apolipoprotein M (APOM)
Reactivity:	Human
Host:	Rabbit
Clonality:	Monoclonal
Conjugate:	This Apolipoprotein M antibody is un-conjugated
Application:	Western Blotting (WB), Immunofluorescence (IF)

Product Details

Purpose:	ApoM Rabbit mAb
Immunogen:	A synthesized peptide derived from human ApoM
Isotype:	IgG
Cross-Reactivity:	Human, Mouse
Characteristics:	Monoclonal Antibodies
Purification:	Affinity purification

Target Details

Target:	Apolipoprotein M (APOM)
Alternative Name:	APOM (APOM Products)
Background:	The protein encoded by this gene is an apolipoprotein and member of the lipocalin protein

Target Details

family. It is found associated with high density lipoproteins and to a lesser extent with low density lipoproteins and triglyceride-rich lipoproteins. The encoded protein is secreted through the plasma membrane but remains membrane-bound, where it is involved in lipid transport. Alternate splicing results in both coding and non-coding variants of this gene. [provided by RefSeq, Jan 2012],G3a, HSPC336, NG20, apo-M,Cancer,Cardiovascular,Cardiovascular diseases,Cardiovascular diseases_Heart disease,Endocrine & Metabolism,Heart,Lipid Metabolism,Lipids,Lipids_Lipoproteins/Apolipoproteins,Signal Transduction,APOM

Molecular Weight: 25kDa

Gene ID: 55937

UniProt: [O95445](#)

Application Details

Application Notes: WB,1:500 - 1:2000,IF,1:50 - 1:200

Restrictions: For Research Use only

Handling

Format: Liquid

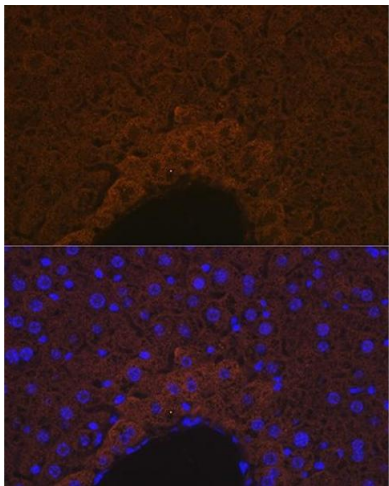
Buffer: PBS with 0.02 % sodium azide,0.05 % BSA,50 % glycerol, pH 7.3.

Preservative: Sodium azide

Precaution of Use: This product contains Sodium azide: a POISONOUS AND HAZARDOUS SUBSTANCE which should be handled by trained staff only.

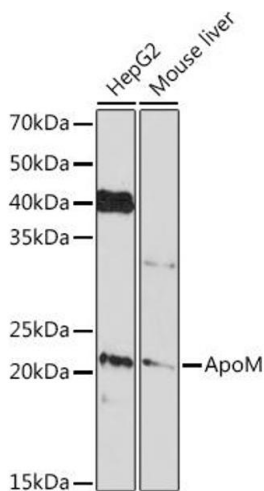
Storage: -20 °C

Storage Comment: Store at -20°C. Avoid freeze / thaw cycles.



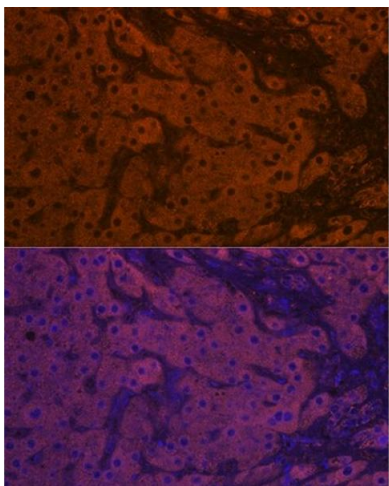
Immunofluorescence

Image 1. Immunofluorescence analysis of mouse liver using ApoM Rabbit mAb (ABIN7265646) at dilution of 1:100 (40x lens). Blue: DAPI for nuclear staining.



Western Blotting

Image 2. Western blot analysis of extracts of various cell lines, using ApoM Rabbit mAb (ABIN7265646) at 1:1000 dilution. Secondary antibody: HRP Goat Anti-Rabbit IgG (H+L) (ABIN1684268 and ABIN3020597) at 1:10000 dilution. Lysates/proteins: 25 µg per lane. Blocking buffer: 3 % nonfat dry milk in TBST. Detection: ECL Basic Kit (RM00020). Exposure time: 3 min.



Immunofluorescence

Image 3. Immunofluorescence analysis of human liver cancer using ApoM Rabbit mAb (ABIN7265646) at dilution of 1:100 (40x lens). Blue: DAPI for nuclear staining.