



Datasheet for ABIN7265670
anti-ASS1 antibody (AA 1-412)



[Go to Product page](#)

3 Images

Overview

Quantity:	100 µL
Target:	ASS1
Binding Specificity:	AA 1-412
Reactivity:	Human
Host:	Rabbit
Clonality:	Polyclonal
Conjugate:	This ASS1 antibody is un-conjugated
Application:	Western Blotting (WB), Immunofluorescence (IF)

Product Details

Purpose:	ASS1 Rabbit pAb
Immunogen:	Recombinant fusion protein containing a sequence corresponding to amino acids 1-412 of human ASS1 (NP_446464.1).
Sequence:	MSSKGSVWLA YSGGLDTSCI LVWLKEQGYD VIAYLANIGQ KEDFEEARKK ALKLGAKKVF IEDVSREFVE EFIWP AIQSS ALYEDRYLLG TSLARPC IAR KQVEIAQREG AKYVSHGATG KGNDQVRFEL SCYSLAPQIK VIAPWRMPEF YNRFKGRNDL MEYAKQH GIP IPVTPKNPWS MDENLMHISY EAGILENPKN QAPPGLYTKT QDPAKAPNTP DILEIEFKKG VPVKVTNVKD GTTHQTSLEL FMYLNEVAGK HGVGRIDIVE NRFI GMKSRG IYETPAGTIL YHAHLDIEAF TMDREVRKIK QGLGLKFAEL VYTGFWHSPE CEFVRHCIAK SQERVEGKVQ VSVLKGQVYI LGRESPLSLY NEELVSMNVQ GDYEPTDATG FININSLRLK EYHRLQSKVT AK
Isotype:	IgG

Product Details

Cross-Reactivity: Human, Mouse, Rat

Characteristics: Polyclonal Antibodies

Purification: Affinity purification

Target Details

Target: ASS1

Alternative Name: ASS1 ([ASS1 Products](#))

Background: The protein encoded by this gene catalyzes the penultimate step of the arginine biosynthetic pathway. There are approximately 10 to 14 copies of this gene including the pseudogenes scattered across the human genome, among which the one located on chromosome 9 appears to be the only functional gene for argininosuccinate synthetase. Mutations in the chromosome 9 copy of this gene cause citrullinemia. Two transcript variants encoding the same protein have been found for this gene.,ASS1,ASS,CTLN1,Epigenetics & Nuclear Signaling,RNA Binding,Cancer,Signal Transduction,Endocrine & Metabolism,Amino acid metabolism,ASS1

Molecular Weight: 46kDa

Gene ID: 445

UniProt: [P00966](#)

Pathways: [Response to Growth Hormone Stimulus](#), [Cellular Response to Molecule of Bacterial Origin](#)

Application Details

Application Notes: WB,1:500 - 1:2000,IF,1:50 - 1:200

Restrictions: For Research Use only

Handling

Format: Liquid

Buffer: PBS with 0.02 % sodium azide,50 % glycerol, pH 7.3.

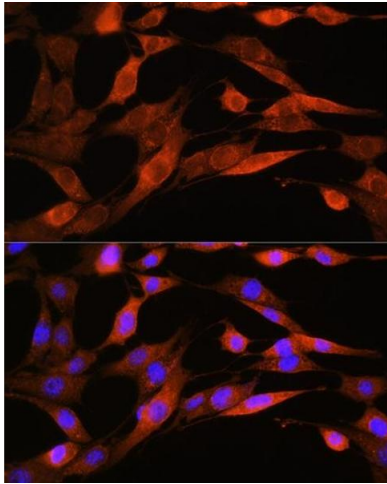
Preservative: Sodium azide

Precaution of Use: This product contains Sodium azide: a POISONOUS AND HAZARDOUS SUBSTANCE which should be handled by trained staff only.

Storage: -20 °C

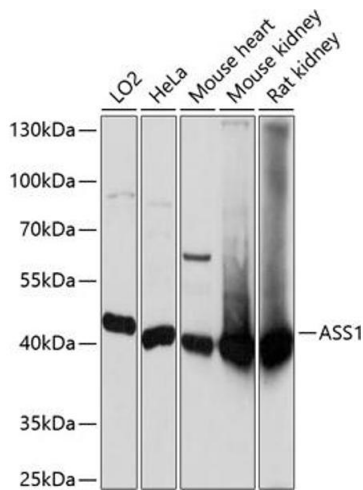
Storage Comment: Store at -20°C. Avoid freeze / thaw cycles.

Images



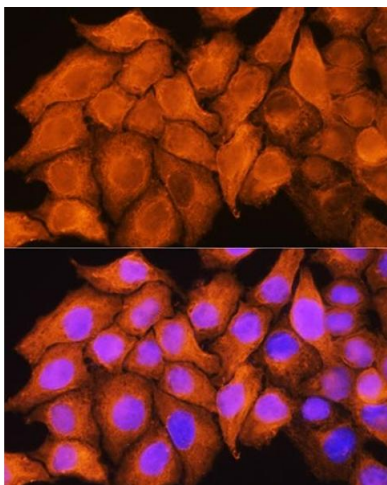
Immunofluorescence

Image 1. Immunofluorescence analysis of NIH/3T3 cells using Rabbit pAb at dilution of 1:100. Blue: DAPI for nuclear staining.



Western Blotting

Image 2. Western blot analysis of extracts of various cell lines, using antibody at 1:3000 dilution. Secondary antibody: HRP Goat Anti-Rabbit IgG (H+L) (ABIN1684268 and ABIN3020597) at 1:10000 dilution. Lysates/proteins: 25 µg per lane. Blocking buffer: 3% nonfat dry milk in TBST. Detection: ECL Basic Kit (RM00020). Exposure time: 1s.



Immunofluorescence

Image 3. Immunofluorescence analysis of HeLa cells using Rabbit pAb at dilution of 1:100. Blue: DAPI for nuclear staining.