

Datasheet for ABIN7265673  
**anti-Arx antibody (C-Term)**[Go to Product page](#)

## 4 Images

## Overview

Quantity:	100 µL
Target:	Arx (ARX)
Binding Specificity:	C-Term
Reactivity:	Human
Host:	Rabbit
Clonality:	Polyclonal
Conjugate:	This Arx antibody is un-conjugated
Application:	Western Blotting (WB), Immunohistochemistry (IHC), Immunofluorescence (IF)

## Product Details

Purpose:	ARX Rabbit pAb
Immunogen:	A synthetic peptide corresponding to a sequence within amino acids 500 to the C-terminus of human ARX (NP_620689.1).
Sequence:	LLRQPTPAVE GAVASGALAD PATAAADRRRA SSIAALRLKA KEHAAQLTQL NILPGTSTGK EVC
Isotype:	IgG
Cross-Reactivity:	Human, Mouse, Rat
Characteristics:	Polyclonal Antibodies
Purification:	Affinity purification

## Target Details

Target: Arx (ARX)

Alternative ARX ([ARX Products](#))

Name:

Background: This gene is a homeobox-containing gene expressed during development. The expressed protein contains two conserved domains, a C-peptide (or aristaless domain) and the prd-like class homeobox domain. It is a member of the group-II aristaless related protein family whose members are expressed primarily in the central and/or peripheral nervous system. This gene is thought to be involved in CNS development. Expansion of a polyalanine tract and other mutations in this gene cause X-linked mental retardation and epilepsy.,ARX,CT121,EIEE1,ISSX,MRX29,MRX32,MRX33,MRX36,MRX38,MRX43,MRX54,MRX76,MRX87,MRXS1,PRTS,Epigenetics & Nuclear Signaling,Transcription Factors,Neuroscience,Dopamine Signaling in Parkinson's Disease,Neurodegenerative Disease Markers,ARX

Gene ID: 170302

UniProt: [Q96QS3](#)

## Application Details

Application Notes: WB,1:500 - 1:2000,IHC,1:50 - 1:200,IF,1:50 - 1:200

Restrictions: For Research Use only

## Handling

Format: Liquid

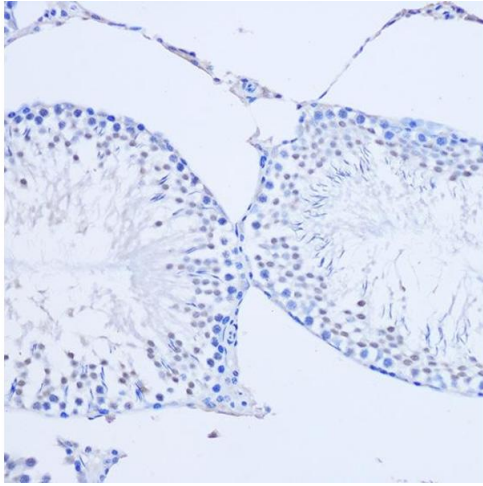
Buffer: PBS with 0.02 % sodium azide,50 % glycerol, pH 7.3.

Preservative: Sodium azide

Precaution of Use: This product contains Sodium azide: a POISONOUS AND HAZARDOUS SUBSTANCE which should be handled by trained staff only.

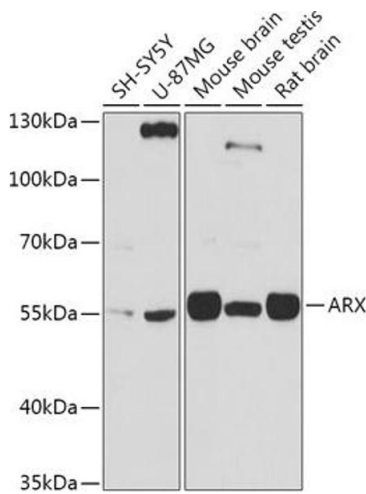
Storage: -20 °C

Storage Comment: Store at -20°C. Avoid freeze / thaw cycles.



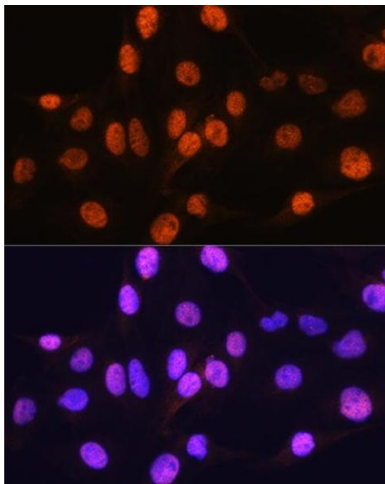
### Immunohistochemistry

**Image 1.** Immunohistochemistry of paraffin-embedded Rat testis using ARX Rabbit pAb (ABIN7265673) at dilution of 1:50 (20x lens). Perform microwave antigen retrieval with 10 mM PBS buffer pH 7.2 before commencing with IHC staining protocol.



### Western Blotting

**Image 2.** Western blot analysis of extracts of various cell lines, using ARX antibody (ABIN7265673) at 1:1000 dilution. Secondary antibody: HRP Goat Anti-Rabbit IgG (H+L) (ABIN1684268 and ABIN3020597) at 1:10000 dilution. Lysates/proteins: 25 µg per lane. Blocking buffer: 3 % nonfat dry milk in TBST. Detection: ECL Basic Kit (RM00020). Exposure time: 10s.



### Immunofluorescence

**Image 3.** Immunofluorescence analysis of C6 cells using ARX Rabbit pAb (ABIN7265673) at dilution of 1:100. Blue: DAPI for nuclear staining.

Please check the [product details page](#) for more images. Overall 4 images are available for ABIN7265673.