



[Go to Product page](#)

Datasheet for ABIN7265674  
**anti-ARMC6 antibody (AA 1-220)**

2 Images

Overview

Quantity:	100 µL
Target:	ARMC6
Binding Specificity:	AA 1-220
Reactivity:	Human
Host:	Rabbit
Clonality:	Polyclonal
Conjugate:	This ARMC6 antibody is un-conjugated
Application:	Western Blotting (WB), Immunofluorescence (IF)

Product Details

Purpose:	ARMC6 Rabbit pAb
Immunogen:	Recombinant fusion protein containing a sequence corresponding to amino acids 1-220 of human ARMC6 (NP_001186125.1).
Sequence:	MSERCCSRYS SGASIGCTPT STQAKMVSKR IAQETFDAAV RENIEEFAMG PEEAVKEAVE QFESQGV DLS NIVKTAPKVS ADGSQEPTHD ILQMLSDLQE SVASSRPQEV SAYLTRFCDQ CKQDKACRFL AAQKGAYPII FTAWKLATAG DQGLLLQSLN ALSVLTDGQP DLLDAQGLQL LVATLTQNAD EADLTCSGIR CVRHACKHE QNRQDLVKAG
Isotype:	IgG
Cross-Reactivity:	Human, Mouse, Rat
Characteristics:	Polyclonal Antibodies

## Product Details

---

Purification: Affinity purification

## Target Details

---

Target: ARMC6

Alternative Name: ARMC6 ([ARMC6 Products](#))

Background: The function of this gene's protein product has not been determined. A related protein in mouse suggests that this protein has a conserved function. Two transcript variants encoding different isoforms have been found for this gene.,ARMC6,R30923\_1,Cell Biology & Developmental Biology,ARMC6

Molecular Weight: 51kDa/54kDa

Gene ID: 93436

UniProt: [Q6NXE6](#)

## Application Details

---

Application Notes: WB,1:500 - 1:2000,IF,1:50 - 1:200

Restrictions: For Research Use only

## Handling

---

Format: Liquid

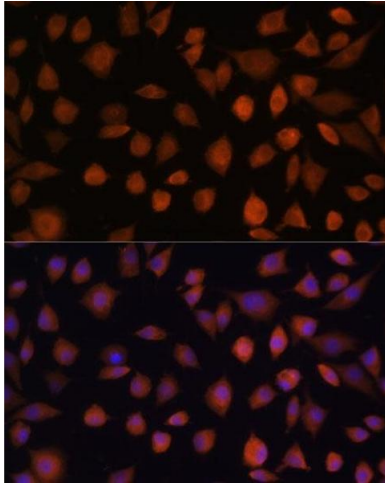
Buffer: PBS with 0.02 % sodium azide,50 % glycerol, pH 7.3.

Preservative: Sodium azide

Precaution of Use: This product contains Sodium azide: a POISONOUS AND HAZARDOUS SUBSTANCE which should be handled by trained staff only.

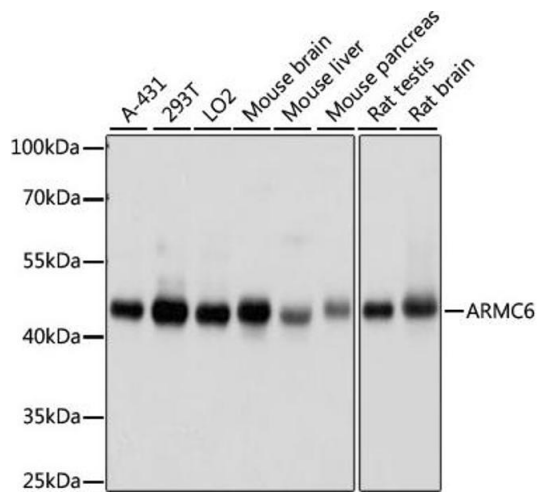
Storage: -20 °C

Storage Comment: Store at -20°C. Avoid freeze / thaw cycles.



### Immunofluorescence

**Image 1.** Immunofluorescence analysis of L929 cells using antibody (ABIN7265674) at dilution of 1:100. Blue: DAPI for nuclear staining.



### Western Blotting

**Image 2.** Western blot analysis of extracts of various cell lines, using antibody (ABIN7265674) at 1000 dilution. Secondary antibody: HRP Goat Anti-Rabbit IgG (H+L) (ABIN1684268 and ABIN3020597) at 1:10000 dilution. Lysates/proteins: 25 µg per lane. Blocking buffer: 3 % nonfat dry milk in TBST. Detection: ECL Basic Kit (RM00020). Exposure time: 10s.