

Datasheet for ABIN7265676  
**anti-ACTR3 antibody**



[Go to Product page](#)

7 Images

### Overview

Quantity:	100 µL
Target:	ACTR3
Reactivity:	Human
Host:	Rabbit
Clonality:	Monoclonal
Conjugate:	This ACTR3 antibody is un-conjugated
Application:	Western Blotting (WB), Immunohistochemistry (IHC), Immunofluorescence (IF)

### Product Details

Purpose:	Arp3 Rabbit mAb
Immunogen:	A synthesized peptide derived from human Arp3
Isotype:	IgG
Cross-Reactivity:	Human, Mouse, Rat
Characteristics:	Monoclonal Antibodies
Purification:	Affinity purification

### Target Details

Target:	ACTR3
Alternative Name:	ACTR3 ( <a href="#">ACTR3 Products</a> )
Background:	The specific function of this gene has not yet been determined, however, the protein it encodes

## Target Details

---

is known to be a major constituent of the ARP2/3 complex. This complex is located at the cell surface and is essential to cell shape and motility through lamellipodial actin assembly and protrusion. Three transcript variants encoding two different isoforms have been found for this gene. [provided by RefSeq, Mar 2013],ARP3,Cell Adhesion,Cell Biology & Developmental Biology,Cell Intrinsic Innate Immunity Signaling Pathway,Cytoskeleton,Cytoskeleton\_Actins,Immunology & Inflammation,ACTR3

Molecular Weight: 47kDa

Gene ID: 10096

UniProt: [P61158](#)

Pathways: [RTK Signaling, Regulation of Actin Filament Polymerization](#)

## Application Details

---

Application Notes: WB,1:500 - 1:2000,IHC,1:50 - 1:200,IF,1:50 - 1:200

Restrictions: For Research Use only

## Handling

---

Format: Liquid

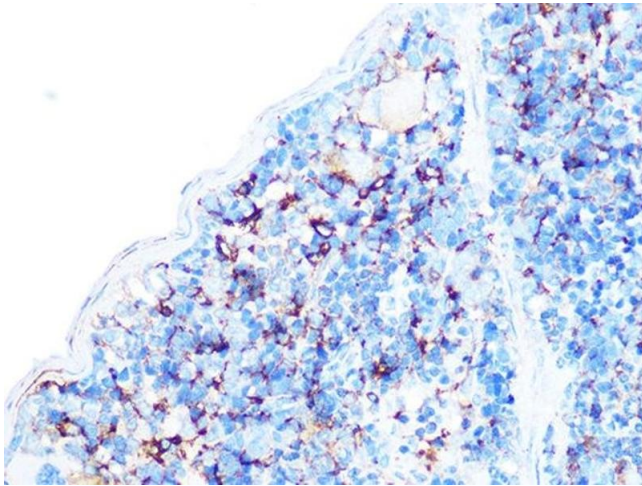
Buffer: PBS with 0.02 % sodium azide,0.05 % BSA,50 % glycerol, pH 7.3.

Preservative: Sodium azide

Precaution of Use: This product contains Sodium azide: a POISONOUS AND HAZARDOUS SUBSTANCE which should be handled by trained staff only.

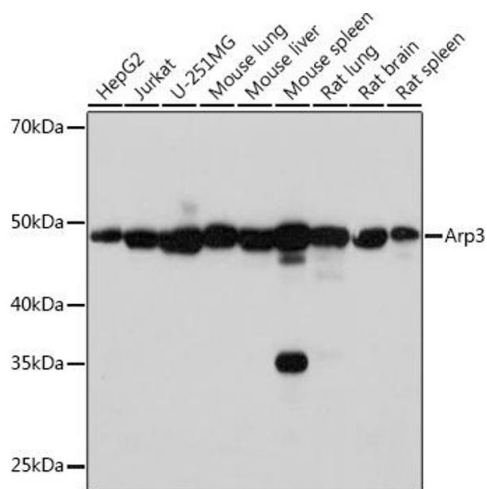
Storage: -20 °C

Storage Comment: Store at -20°C. Avoid freeze / thaw cycles.



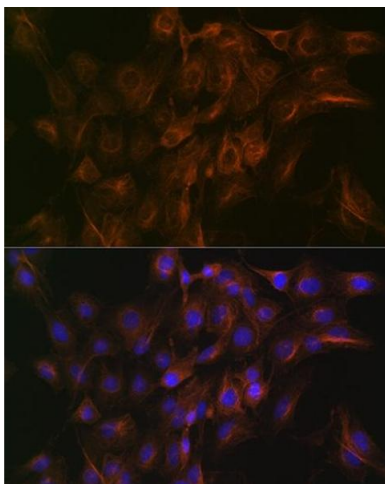
### Immunohistochemistry

**Image 1.** Immunohistochemistry of paraffin-embedded mouse spleen using Arp3 Rabbit mAb (ABIN7265676) at dilution of 1:100 (40x lens). Perform microwave antigen retrieval with 10 mM PBS buffer pH 7.2 before commencing with IHC staining protocol.



### Western Blotting

**Image 2.** Western blot analysis of extracts of various cell lines, using Arp3 Rabbit mAb (ABIN7265676) at 1:1000 dilution. Secondary antibody: HRP Goat Anti-Rabbit IgG (H+L) (ABIN1684268 and ABIN3020597) at 1:10000 dilution. Lysates/proteins: 25 µg per lane. Blocking buffer: 3 % nonfat dry milk in TBST. Detection: ECL Basic Kit (RM00020). Exposure time: 3s.



### Immunofluorescence

**Image 3.** Immunofluorescence analysis of C6 cells using Arp3 Rabbit mAb (ABIN7265676) at dilution of 1:100 (40x lens). Blue: DAPI for nuclear staining.

Please check the [product details page](#) for more images. Overall 7 images are available for ABIN7265676.