



[Go to Product page](#)

Datasheet for ABIN7265713  
**anti-ATL2 antibody (AA 390-470)**

4 Images

Overview

|                      |  |
|----------------------|--|
| Quantity:            | 100 µL   |
| Target:              | ATL2   |
| Binding Specificity: | AA 390-470                                     |
| Reactivity:          | Human  |
| Host:                | Rabbit   |
| Clonality:           | Polyclonal                                     |
| Conjugate:           | This ATL2 antibody is un-conjugated            |
| Application:         | Western Blotting (WB), Immunofluorescence (IF) |

Product Details

|                   |   |
|-------------------|---|
| Purpose:          | ATL2 Rabbit pAb   |
| Immunogen:        | Recombinant fusion protein containing a sequence corresponding to amino acids 390-470 of human ATL2 (NP_001129145.1). |
| Sequence:         | ARDTYCKSME QVCGGDKPYI APSDLERKHL DLKEVAIKQF RSVKKGMDGDE FCRRYQDQLE<br>AEIEETYANF IKHNDGKNIF Y                         |
| Isotype:          | IgG   |
| Cross-Reactivity: | Human, Mouse, Rat   |
| Characteristics:  | Polyclonal Antibodies   |
| Purification:     | Affinity purification   |

## Target Details

---

|                   |   |
|-------------------|---|
| Target:           | ATL2  |
| Alternative Name: | ATL2 ( <a href="#">ATL2 Products</a> )  |
| Background:       | GTPase tethering membranes through formation of trans-homooligomers and mediating homotypic fusion of endoplasmic reticulum membranes. Functions in endoplasmic reticulum tubular network biogenesis.,ATL2,ARL3IP2,ARL6IP2,aip-2,atlastin2,Signal Transduction,G protein signaling,Signal Transduction,ATL2 |
| Molecular Weight: | 46kDa/64kDa/65kDa/66kDa   |
| Gene ID:          | 64225   |
| UniProt:          | <a href="#">Q8NHH9</a>  |

## Application Details

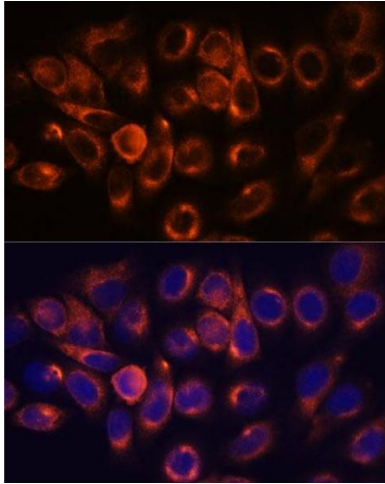
---

|                    |                                   |
|--------------------|-----------------------------------|
| Application Notes: | WB,1:500 - 1:2000,IF,1:50 - 1:200 |
| Restrictions:      | For Research Use only             |

## Handling

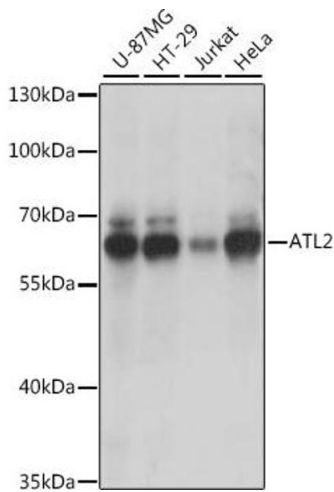
---

|                    |  |
|--------------------|--|
| Format:            | Liquid   |
| Buffer:            | PBS with 0.02 % sodium azide,50 % glycerol, pH 7.3.  |
| Preservative:      | Sodium azide   |
| Precaution of Use: | This product contains Sodium azide: a POISONOUS AND HAZARDOUS SUBSTANCE which should be handled by trained staff only. |
| Storage:           | -20 °C   |
| Storage Comment:   | Store at -20°C. Avoid freeze / thaw cycles.  |



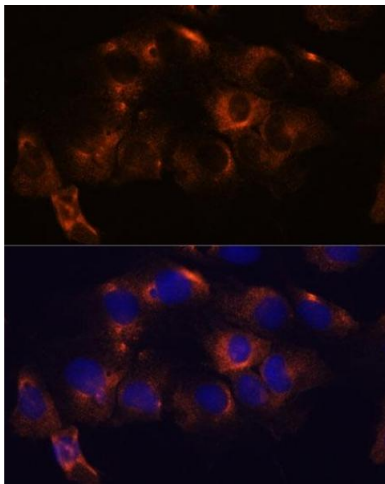
### Immunofluorescence

**Image 1.** Immunofluorescence analysis of HeLa cells using antibody (ABIN7265713) at dilution of 1:100. Blue: DAPI for nuclear staining.



### Western Blotting

**Image 2.** Western blot analysis of extracts of various cell lines, using antibody (ABIN7265713) at 1:1000 dilution. Secondary antibody: HRP Goat Anti-Rabbit IgG (H+L) (ABIN1684268 and ABIN3020597) at 1:10000 dilution. Lysates/proteins: 25 µg per lane. Blocking buffer: 3 % nonfat dry milk in TBST. Detection: ECL Basic Kit (RM00020). Exposure time: 10s.



### Immunofluorescence

**Image 3.** Immunofluorescence analysis of C6 cells using antibody (ABIN7265713) at dilution of 1:100. Blue: DAPI for nuclear staining.

Please check the [product details page](#) for more images. Overall 4 images are available for ABIN7265713.