

Datasheet for ABIN7265721

anti-ATP5A1 antibody

6 Images

[Go to Product page](#)

Overview

Quantity:	100 µL
Target:	ATP5A1
Reactivity:	Human
Host:	Rabbit
Clonality:	Monoclonal
Conjugate:	This ATP5A1 antibody is un-conjugated
Application:	Western Blotting (WB), Immunohistochemistry (IHC), Immunofluorescence (IF)

Product Details

Purpose:	ATP5A1 Rabbit mAb
Immunogen:	A synthesized peptide derived from human ATP5A1
Isotype:	IgG
Cross-Reactivity:	Human, Mouse, Rat
Characteristics:	Monoclonal Antibodies
Purification:	Affinity purification

Target Details

Target:	ATP5A1
Alternative Name:	ATP5A1 (ATP5A1 Products)
Background:	This gene encodes a subunit of mitochondrial ATP synthase. Mitochondrial ATP synthase

Target Details

catalyzes ATP synthesis, using an electrochemical gradient of protons across the inner membrane during oxidative phosphorylation. ATP synthase is composed of two linked multi-subunit complexes: the soluble catalytic core, F1, and the membrane-spanning component, Fo, comprising the proton channel. The catalytic portion of mitochondrial ATP synthase consists of 5 different subunits (alpha, beta, gamma, delta, and epsilon) assembled with a stoichiometry of 3 alpha, 3 beta, and a single representative of the other 3. The proton channel consists of three main subunits (a, b, c). This gene encodes the alpha subunit of the catalytic core. Alternatively spliced transcript variants encoding the different isoforms have been identified. Pseudogenes of this gene are located on chromosomes 9, 2, and 16. [provided by RefSeq, Mar 2012],ATP5A, ATP5AL2, ATPM, COXPD22, HEL-S-123m, MC5DN4, MOM2, OMR, ORM, hATP1,Endocrine & Metabolism,Epigenetics & Nuclear Signaling,Mitochondrial metabolism,Mitochondrial metabolism_Mitochondrial markers,Mitochondrial metabolism_Oxidative phosphorylation,Neurodegenerative Diseases,Neuroscience,RNA Binding,Signal Transduction,ATP5A1

Molecular Weight: 55kDa

Gene ID: 498

UniProt: [P25705](#)

Pathways: [Proton Transport](#), [Ribonucleoside Biosynthetic Process](#)

Application Details

Application Notes: WB,1:500 - 1:2000,IHC,1:50 - 1:200,IF,1:50 - 1:200

Restrictions: For Research Use only

Handling

Format: Liquid

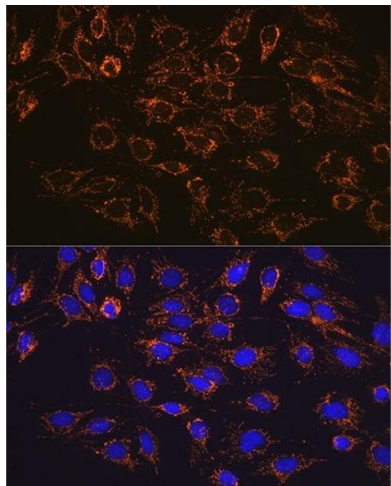
Buffer: PBS with 0.02 % sodium azide,0.05 % BSA,50 % glycerol, pH 7.3.

Preservative: Sodium azide

Precaution of Use: This product contains Sodium azide: a POISONOUS AND HAZARDOUS SUBSTANCE which should be handled by trained staff only.

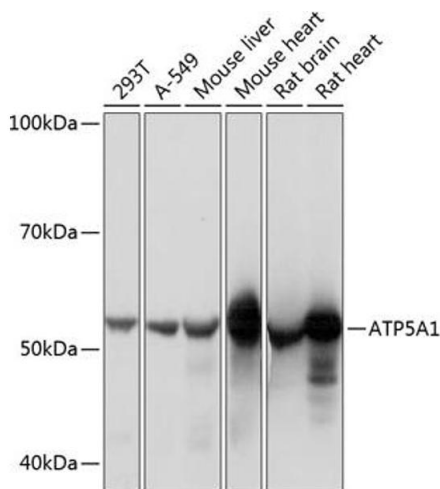
Storage: -20 °C

Storage Comment: Store at -20°C. Avoid freeze / thaw cycles.



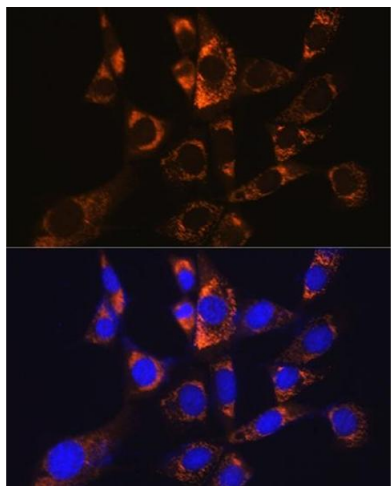
Immunofluorescence

Image 1. Immunofluorescence analysis of C6 cells using Rabbit mAb (1217) at dilution of 1:100 (40x lens). Blue: DAPI for nuclear staining.



Western Blotting

Image 2. Western blot analysis of extracts of various cell lines, using Rabbit mAb (1217) at 1:1000 dilution. Secondary antibody: HRP Goat Anti-Rabbit IgG (H+L) (ABIN1684268 and ABIN3020597) at 1:10000 dilution. Lysates/proteins: 25 µg per lane. Blocking buffer: 3 % nonfat dry milk in TBST. Detection: ECL Basic Kit (RM00020). Exposure time: 1s.



Immunofluorescence

Image 3. Immunofluorescence analysis of NIH-3T3 cells using Rabbit mAb (1217) at dilution of 1:100 (40x lens). Blue: DAPI for nuclear staining.

Please check the [product details page](#) for more images. Overall 6 images are available for ABIN7265721.