

Datasheet for ABIN7265728
anti-ABCA2 antibody (AA 2307-2466)[Go to Product page](#)

3 Images

Overview

Quantity:	100 µL
Target:	ABCA2
Binding Specificity:	AA 2307-2466
Reactivity:	Human
Host:	Rabbit
Clonality:	Polyclonal
Conjugate:	This ABCA2 antibody is un-conjugated
Application:	Western Blotting (WB), Immunohistochemistry (IHC), Immunofluorescence (IF)

Product Details

Purpose:	ABCA2 Rabbit pAb
Immunogen:	Recombinant fusion protein containing a sequence corresponding to amino acids 2307-2466 of human ABCA2 (NP_997698.1).
Sequence:	FGDGYMITVR TKSSQSVKDV VRFFNRFPE AMLKERHHTK VQYQLKSEHI SLAQVFSKME QVSGVLGIED YSVSQTTLDN VFVNFARKQS DNLEQQETEP PSALQSPLGC LLSLLRPRSA PTELRALVAD EPEDLDTEDE GLISFEEERA QLSFNDDTLC
Isotype:	IgG
Cross-Reactivity:	Human, Mouse, Rat
Characteristics:	Polyclonal Antibodies
Purification:	Affinity purification

Target Details

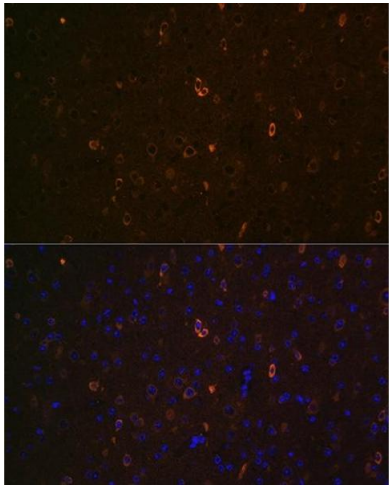
Target:	ABCA2
Alternative Name:	ABCA2 (ABCA2 Products)
Background:	<p>The membrane-associated protein encoded by this gene is a member of the superfamily of ATP-binding cassette (ABC) transporters. ABC proteins transport various molecules across extra- and intracellular membranes. ABC genes are divided into seven distinct subfamilies (ABC1, MDR/TAP, MRP, ALD, OABP, GCN20, White). This protein is a member of the ABC1 subfamily. Members of the ABC1 subfamily comprise the only major ABC subfamily found exclusively in multicellular eukaryotes. This protein is highly expressed in brain tissue and may play a role in macrophage lipid metabolism and neural development. Two transcript variants encoding different isoforms have been found for this gene.,ABCA2,ABC2,Cancer,Signal Transduction,Endocrine & Metabolism,Lipid Metabolism,Cholesterol Metabolism,Immunology & Inflammation,Cell Intrinsic Innate Immunity Signaling Pathway,Neuroscience,Amyloid Plaque and Neurofibrillary Tangle Formation in Alzheimer's Disease,Neurodegenerative Diseases Markers,Cardiovascular,Heart,Lipids,Cardiovascular diseases,Heart disease,ABCA2</p>
Molecular Weight:	230kDa/269kDa
Gene ID:	20
UniProt:	Q9BZC7

Application Details

Application Notes:	WB,1:500 - 1:1000,IHC,1:50 - 1:200,IF,1:50 - 1:200
Restrictions:	For Research Use only

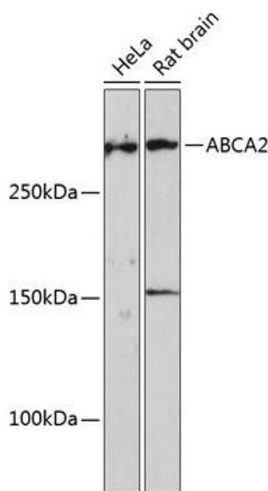
Handling

Format:	Liquid
Buffer:	PBS with 0.02 % sodium azide,50 % glycerol, pH 7.3.
Preservative:	Sodium azide
Precaution of Use:	This product contains Sodium azide: a POISONOUS AND HAZARDOUS SUBSTANCE which should be handled by trained staff only.
Storage:	-20 °C
Storage Comment:	Store at -20°C. Avoid freeze / thaw cycles.



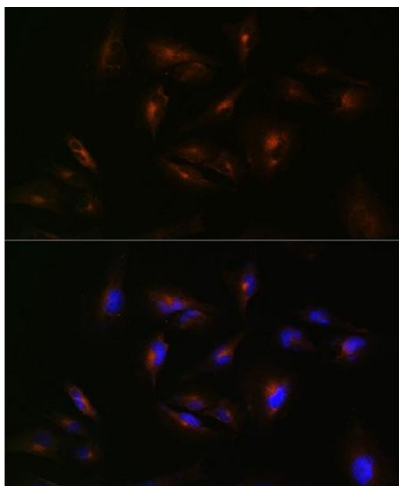
Immunofluorescence

Image 1. Immunofluorescence analysis of mouse brain using Rabbit pAb (ABIN7265728) at dilution of 1:100 (40x lens). Blue: DAPI for nuclear staining.



Western Blotting

Image 2. Western blot analysis of extracts of various cell lines, using Polyclonal Antibody (ABIN7265728) at 1:1000 dilution. Secondary antibody: HRP Goat Anti-Rabbit IgG (H+L) (ABIN1684268 and ABIN3020597) at 1:10000 dilution. Lysates/proteins: 25 µg per lane. Blocking buffer: 3 % nonfat dry milk in TBST. Detection: ECL Enhanced Kit (RM00021). Exposure time: 3 min.



Immunofluorescence

Image 3. Immunofluorescence analysis of U-251 MG cells using Rabbit pAb (ABIN7265728) at dilution of 1:100 (40x lens). Blue: DAPI for nuclear staining.