



[Go to Product page](#)

Datasheet for ABIN7265732

## anti-ABCB1 antibody

### 5 Images

#### Overview

|              |   |
|--------------|---|
| Quantity:    | 100 µL  |
| Target:      | ABCB1   |
| Reactivity:  | Human   |
| Host:        | Rabbit  |
| Clonality:   | Monoclonal  |
| Conjugate:   | This ABCB1 antibody is un-conjugated              |
| Application: | Western Blotting (WB), Immunohistochemistry (IHC) |

#### Product Details

|                   |   |
|-------------------|---|
| Purpose:          | P Glycoprotein Rabbit mAb                               |
| Immunogen:        | A synthesized peptide derived from human P Glycoprotein |
| Isotype:          | IgG   |
| Cross-Reactivity: | Human, Mouse, Rat                                       |
| Characteristics:  | Monoclonal Antibodies                                   |
| Purification:     | Affinity purification                                   |

#### Target Details

|                   |  |
|-------------------|--|
| Target:           | ABCB1  |
| Alternative Name: | ABCB1 ( <a href="#">ABCB1 Products</a> )   |
| Background:       | The membrane-associated protein encoded by this gene is a member of the superfamily of |

## Target Details

---

ATP-binding cassette (ABC) transporters. ABC proteins transport various molecules across extra- and intra-cellular membranes. ABC genes are divided into seven distinct subfamilies (ABC1, MDR/TAP, MRP, ALD, OABP, GCN20, White). This protein is a member of the MDR/TAP subfamily. Members of the MDR/TAP subfamily are involved in multidrug resistance. The protein encoded by this gene is an ATP-dependent drug efflux pump for xenobiotic compounds with broad substrate specificity. It is responsible for decreased drug accumulation in multidrug-resistant cells and often mediates the development of resistance to anticancer drugs. This protein also functions as a transporter in the blood-brain barrier. Mutations in this gene are associated with colchicine resistance and Inflammatory bowel disease 13. Alternative splicing and the use of alternative promoters results in multiple transcript variants. [provided by RefSeq, Feb 2017],ABC20,CD243,CLCS,GP170,MDR1,P-GP,PGY1,P  
Glycoprotein,ABCB1,Cancer,CDs,Drug resistance,Drug resistance\_P glycoproteins,Endocrine & Metabolism,Hematopoietic Progenitors,Immunology & Inflammation,Signal Transduction,Stem Cells,ABCB1

---

Molecular Weight: 134kDa/141kDa

---

Gene ID: 5243

---

UniProt: [P08183](#)

## Application Details

---

Application Notes: WB,1:500 - 1:2000,IHC,1:50 - 1:200

---

Restrictions: For Research Use only

## Handling

---

Format: Liquid

---

Buffer: PBS with 0.02 % sodium azide,0.05 % BSA,50 % glycerol, pH 7.3.

---

Preservative: Sodium azide

---

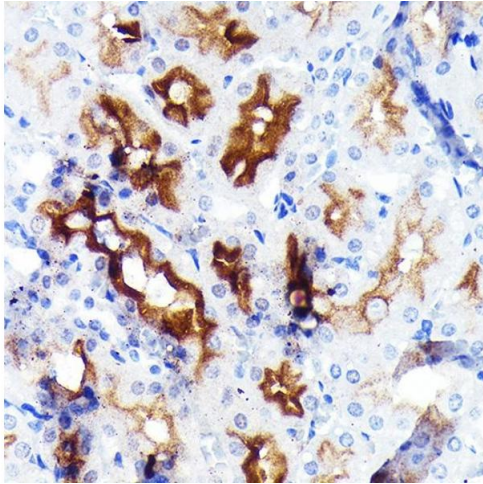
Precaution of Use: This product contains Sodium azide: a POISONOUS AND HAZARDOUS SUBSTANCE which should be handled by trained staff only.

---

Storage: -20 °C

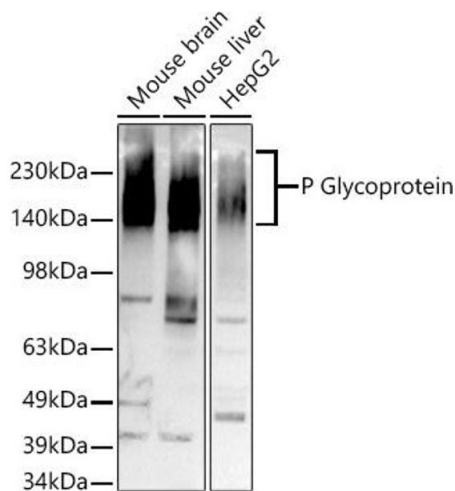
---

Storage Comment: Store at -20°C. Avoid freeze / thaw cycles.



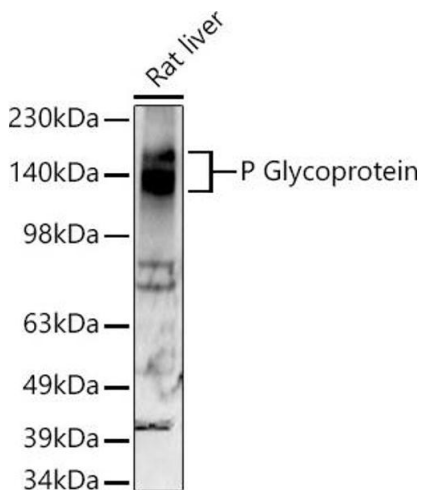
### Immunohistochemistry

**Image 1.** Immunohistochemistry of paraffin-embedded rat kidney using P Glycoprotein Rabbit mAb (ABIN7265732) at dilution of 1:100 (40x lens). Perform microwave antigen retrieval with 10 mM PBS buffer pH 7.2 before commencing with IHC staining protocol.



### Western Blotting

**Image 2.** Western blot analysis of extracts of various cell lines, using P Glycoprotein antibody (ABIN7265732) at 1:500 dilution. Secondary antibody: HRP Goat Anti-Rabbit IgG (H+L) (ABIN1684268 and ABIN3020597) at 1:10000 dilution. Lysates/proteins: 25 µg per lane. Blocking buffer: 3 % nonfat dry milk in TBST. Detection: ECL Basic Kit (RM00020). Exposure time: 180s.



### Western Blotting

**Image 3.** Western blot analysis of extracts of Rat liver, using P Glycoprotein antibody (ABIN7265732) at 1:500 dilution. Secondary antibody: HRP Goat Anti-Rabbit IgG (H+L) (ABIN1684268 and ABIN3020597) at 1:10000 dilution. Lysates/proteins: 25 µg per lane. Blocking buffer: 3 % nonfat dry milk in TBST. Detection: ECL Enhanced Kit (RM00021). Exposure time: 90s.

Please check the [product details page](#) for more images. Overall 5 images are available for ABIN7265732.