

Datasheet for ABIN7265736

**anti-ABCC1 antibody**

## 4 Images

[Go to Product page](#)

## Overview

Quantity:	100 µL
Target:	ABCC1
Reactivity:	Human
Host:	Rabbit
Clonality:	Monoclonal
Conjugate:	This ABCC1 antibody is un-conjugated
Application:	Western Blotting (WB), Immunohistochemistry (IHC)

## Product Details

Purpose:	MRP1/ABCC1 Rabbit mAb
Immunogen:	A synthesized peptide derived from human MRP1/ABCC1
Isotype:	IgG
Cross-Reactivity:	Human, Mouse, Rat
Characteristics:	Monoclonal Antibodies
Purification:	Affinity purification

## Target Details

Target:	ABCC1
Alternative Name:	ABCC1 ( <a href="#">ABCC1 Products</a> )
Background:	The protein encoded by this gene is a member of the superfamily of ATP-binding cassette

## Target Details

(ABC) transporters. ABC proteins transport various molecules across extra-and intra-cellular membranes. ABC genes are divided into seven distinct subfamilies (ABC1, MDR/TAP, MRP, ALD, OABP, GCN20, White). This full transporter is a member of the MRP subfamily which is involved in multi-drug resistance. This protein functions as a multispecific organic anion transporter, with oxidized glutathione, cysteinyl leukotrienes, and activated aflatoxin B1 as substrates. This protein also transports glucuronides and sulfate conjugates of steroid hormones and bile salts. Alternatively spliced variants of this gene have been described but their full-length nature is unknown. [provided by RefSeq, Apr 2012],ABC29, ABCC, GS-X, MRP, MRP1,Blood,Blood\_Blood Pressure regulation,Cancer,Cardiovascular,Cardiovascular diseases,Cardiovascular diseases\_Heart disease,Cardiovascular diseases\_Hypertension,Drug metabolism,Drug resistance,Drug resistance\_MRP-related proteins,Endocrine & Metabolism,Heart,Signal Transduction,ABCC1

Molecular Weight: 171kDa

Gene ID: 4363

UniProt: [P33527](#)

Pathways: [SARS-CoV-2 Protein Interactome](#)

## Application Details

Application Notes: WB,1:500 - 1:2000,IHC,1:50 - 1:200

Restrictions: For Research Use only

## Handling

Format: Liquid

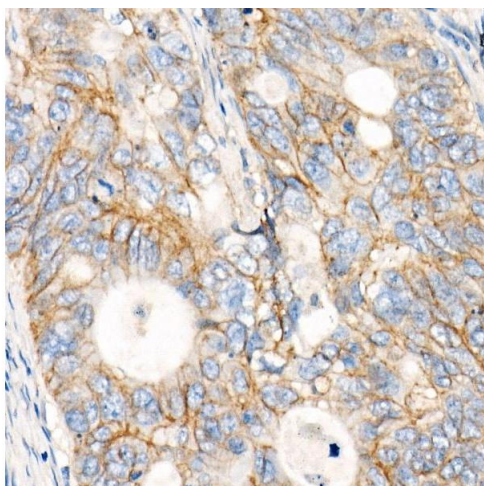
Buffer: PBS with 0.02 % sodium azide,0.05 % BSA,50 % glycerol, pH 7.3.

Preservative: Sodium azide

Precaution of Use: This product contains Sodium azide: a POISONOUS AND HAZARDOUS SUBSTANCE which should be handled by trained staff only.

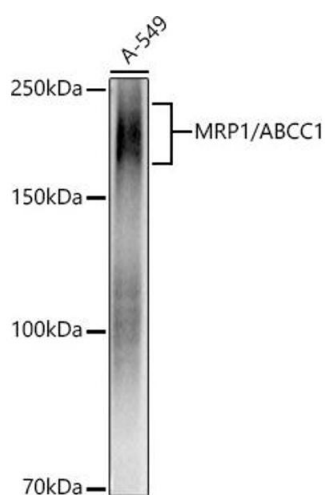
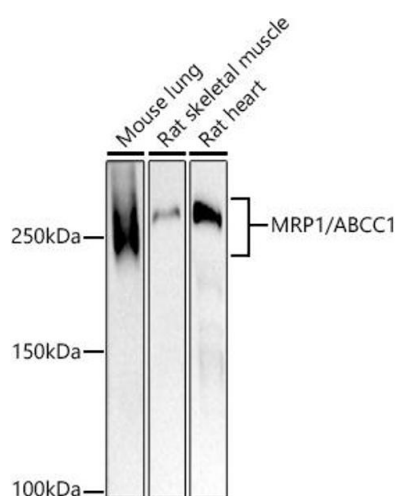
Storage: -20 °C

Storage Comment: Store at -20°C. Avoid freeze / thaw cycles.



### Immunohistochemistry

**Image 1.** Immunohistochemistry of paraffin-embedded human colon carcinoma using MRP1/ antibody (ABIN7265736) at dilution of 1:100 (40x lens). Perform high pressure antigen retrieval with 10 mM citrate buffer pH 6.0 before commencing with IHC staining protocol.



### Western Blotting

**Image 2.** Western blot analysis of extracts of various cell lines, using MRP1/ antibody (ABIN7265736) at 1:1000 dilution. Secondary antibody: HRP Goat Anti-Rabbit IgG (H+L) (ABIN1684268 and ABIN3020597) at 1:10000 dilution. Lysates/proteins: 25 µg per lane. Blocking buffer: 3 % nonfat dry milk in TBST. Detection: ECL Basic Kit (RM00020). Exposure time: 180s.

### Western Blotting

**Image 3.** Western blot analysis of extracts of A-549 cells, using MRP1/ antibody (ABIN7265736) at 1:1000 dilution. Secondary antibody: HRP Goat Anti-Rabbit IgG (H+L) (ABIN1684268 and ABIN3020597) at 1:10000 dilution. Lysates/proteins: 25 µg per lane. Blocking buffer: 3 % nonfat dry milk in TBST. Detection: ECL Basic Kit (RM00020). Exposure time: 1S.

Please check the [product details page](#) for more images. Overall 4 images are available for ABIN7265736.