

Datasheet for ABIN7265739

anti-ABCE1 antibody**2** Images[Go to Product page](#)

Overview

Quantity:	100 µL
Target:	ABCE1
Reactivity:	Human
Host:	Rabbit
Clonality:	Monoclonal
Conjugate:	This ABCE1 antibody is un-conjugated
Application:	Western Blotting (WB), Immunofluorescence (IF)

Product Details

Purpose:	ABCE1 Rabbit mAb
Immunogen:	A synthesized peptide derived from human ABCE1
Isotype:	IgG
Cross-Reactivity:	Human, Mouse
Characteristics:	Monoclonal Antibodies
Purification:	Affinity purification

Target Details

Target:	ABCE1
Alternative Name:	ABCE1 (ABCE1 Products)
Background:	The protein encoded by this gene is a member of the superfamily of ATP-binding cassette

Target Details

(ABC) transporters. ABC proteins transport various molecules across extra- and intra-cellular membranes. ABC genes are divided into seven distinct subfamilies (ABC1, MDR/TAP, MRP, ALD, OABP, GCN20, White). This protein is a member of the OABP subfamily. Alternatively referred to as the RNase L inhibitor, this protein functions to block the activity of ribonuclease L. Activation of ribonuclease L leads to inhibition of protein synthesis in the 2-5A/RNase L system, the central pathway for viral interferon action. Two transcript variants encoding the same protein have been found for this gene. [provided by RefSeq, Jul 2008],ABC38, OABP, RLI, RLI1, RNASEL1, RNASELI, RNS4I,Cancer,Endocrine & Metabolism,Immunology & Inflammation,Signal Transduction,ABCE1

Molecular Weight: 67kDa

Gene ID: 6059

UniProt: [P61221](#)

Application Details

Application Notes: WB,1:500 - 1:2000,IF,1:50 - 1:200

Restrictions: For Research Use only

Handling

Format: Liquid

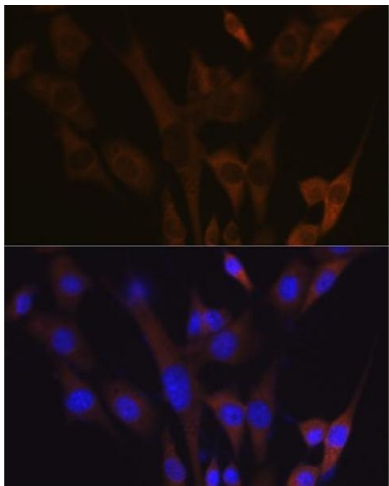
Buffer: PBS with 0.02 % sodium azide,0.05 % BSA,50 % glycerol, pH 7.3.

Preservative: Sodium azide

Precaution of Use: This product contains Sodium azide: a POISONOUS AND HAZARDOUS SUBSTANCE which should be handled by trained staff only.

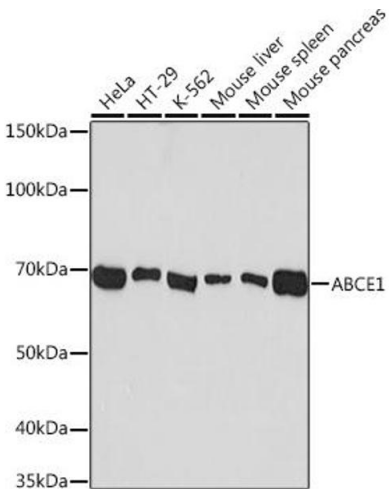
Storage: -20 °C

Storage Comment: Store at -20°C. Avoid freeze / thaw cycles.



Immunofluorescence

Image 1. Immunofluorescence analysis of NIH-3T3 cells using Rabbit mAb (ABIN7265739) at dilution of 1:100 (40x lens). Blue: DAPI for nuclear staining.



Western Blotting

Image 2. Western blot analysis of extracts of various cell lines, using Rabbit mAb (ABIN7265739) at 1:1000 dilution. Secondary antibody: HRP Goat Anti-Rabbit IgG (H+L) (ABIN1684268 and ABIN3020597) at 1:10000 dilution. Lysates/proteins: 25 µg per lane. Blocking buffer: 3 % nonfat dry milk in TBST. Detection: ECL Basic Kit (RM00020). Exposure time: 60s.