



[Go to Product page](#)

Datasheet for ABIN7265743
anti-ABCF3 antibody (AA 1-200)

2 Images

Overview

Quantity:	100 µL
Target:	ABCF3
Binding Specificity:	AA 1-200
Reactivity:	Human
Host:	Rabbit
Clonality:	Polyclonal
Conjugate:	This ABCF3 antibody is un-conjugated
Application:	Western Blotting (WB), Immunohistochemistry (IHC)

Product Details

Purpose:	ABCF3 Rabbit pAb
Immunogen:	Recombinant fusion protein containing a sequence corresponding to amino acids 1-200 of human ABCF3 (NP_060828.2).
Sequence:	MATCAEILRS EFPEIDGQVF DYVTGVLHSG SADFESVDDL VEAVGELLQE VSGDSKDDAG IRAVCQRMYN TLRLAEPQSQ GNSQVLLDAP IQLSKITENY DCGTKLPGLL KREQSSTVNA KKLEKAEARL KAKQEKRSEK DTLKTSNPLV LEEASASQAG SRKESRLESS GKNKSYDVRI ENFDVSFGDR VLLAGADVNL
Isotype:	IgG
Cross-Reactivity:	Human, Mouse, Rat
Characteristics:	Polyclonal Antibodies

Product Details

Purification: Affinity purification

Target Details

Target: ABCF3

Alternative Name: ABCF3 ([ABCF3 Products](#))

Background: This gene encodes a member of the ATP-binding cassette (ABC) transporter superfamily. ATP-binding cassette proteins transport various molecules across extra- and intracellular membranes. The protein encoded by this gene displays antiviral effect against flaviviruses. Alternatively spliced transcript variants encoding different isoforms have been found for this gene.,ABCF3,EST201864,Cancer,Signal Transduction,Cell Biology & Developmental Biology,Endocrine & Metabolism,ABCF3

Molecular Weight: 78kDa/79kDa

Gene ID: 55324

UniProt: [Q9NUQ8](#)

Application Details

Application Notes: WB,1:500 - 1:2000,IHC,1:50 - 1:200

Restrictions: For Research Use only

Handling

Format: Liquid

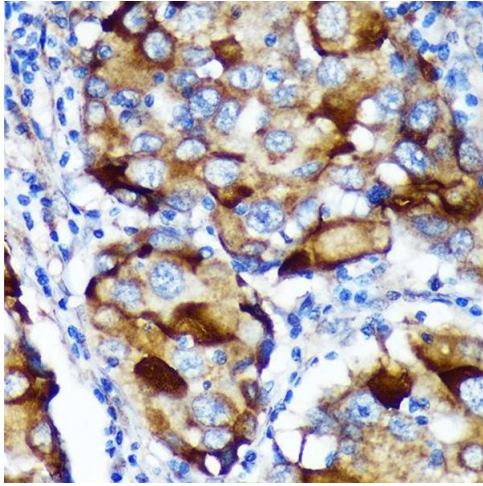
Buffer: PBS with 0.02 % sodium azide,50 % glycerol, pH 7.3.

Preservative: Sodium azide

Precaution of Use: This product contains Sodium azide: a POISONOUS AND HAZARDOUS SUBSTANCE which should be handled by trained staff only.

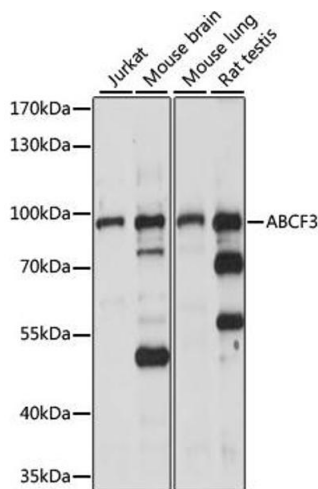
Storage: -20 °C

Storage Comment: Store at -20°C. Avoid freeze / thaw cycles.



Immunohistochemistry

Image 1. Immunohistochemistry of paraffin-embedded Human breast cancer using Rabbit pAb (ABIN7265743) at dilution of 1:100 (40x lens). Perform microwave antigen retrieval with 10 mM PBS buffer pH 7.2 before commencing with IHC staining protocol.



Western Blotting

Image 2. Western blot analysis of extracts of various cell lines, using antibody (ABIN7265743) at 1:1000 dilution. Secondary antibody: HRP Goat Anti-Rabbit IgG (H+L) (ABIN1684268 and ABIN3020597) at 1:10000 dilution. Lysates/proteins: 25 µg per lane. Blocking buffer: 3 % nonfat dry milk in TBST. Detection: ECL Basic Kit (RM00020). Exposure time: 30s.